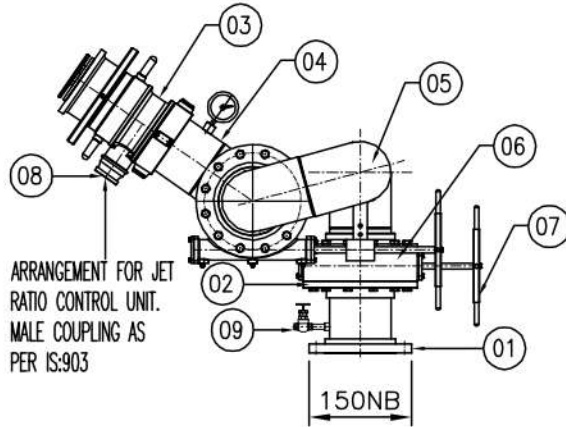


# IMEN DATIS ASIA

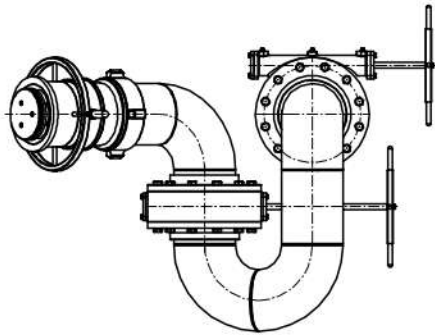


THIS DRAWING AND DESIGN IS A PROPERTY OF 'FIRETECH' AND MUST NOT BE COPIED OR LEND WITHOUT THEIR PERMISSION IN WRITING.



### MATERIAL OF CONSTRUCTION

SR.NO.	DESCRIPTION	MATERIAL
1	BASE FLANGE	ASTM A182 F304
2	SWIVEL JOINT	ASTM A351 CF8(SS:304)
3	NOZZLE	ASTM A351 CF8M(SS:304)
4	PIPE	ASTM A312 TP304
5	BEND	ASTM A403 WP304
6	WORM RING	ASTM A351 CF8M(SS:304)
7	HANDLE	ASTM A351 CF8M(SS:304)
8	MALE COUPLING	SS:304
9	DRAIN VALVE	SS:304



### TECHNICAL DETAILS

1. MAX.WORKING PRESSURE:-12 Kg/Cm2
2. HYDRAULIC TEST PRESSURE:-23 Kg/Cm2 FOR 5 MIN.
3. SPRAY ANGLE:-140°
4. FOAM EXPANSION RATIO 1:3 TO 1:4.
5. FOAM INDUCTION:- (3-3.6%) WITH JET RATIO CONTROL UNIT
6. FLANGE DRILLING:- AS PER ANSI B16.5,150#
7. ROTATION:- HORIZONTAL-360°,VERTICAL- +90°,-15°
8. FINISH:-PAINTED FIRE RED TO SHADE NO:536 OF IS:5

### PERFORMANCE DETAILS

MONITOR MODEL	NOZZLE MODEL	FLANGE NB	NOZZLE (NB)	NOZZLE FLOW SETTING (GPM) @7 Kg/Cm2	2000 GPM		1000 GPM	
					VERTICAL THROW 7 Kg/Cm2@30°(MTR)		HORIZONTAL THROW 7 Kg/Cm2@30°(MTR)	
					WATER	FOAM	WATER	FOAM
HFLR-FM-150	AFM-VF-150	150	150	2000-1500-1000(+5%)GPM	14.5	12.5	64	56

- NOTES: 1) WORKING PRESSURE SPECIFIED IS AT INLET OF THE NOZZLE  
2) ALL DIMENSIONS ARE IN mm,UNLESS OTHERWISE SPECIFIED.



TITLE:-HIGH VOLUME LONG-RANGE FOAM-CUM-WATER MONITOR-2000-1500-1000GPM-STAINLESS STEEL(SS-304)

DRG.NO.

R

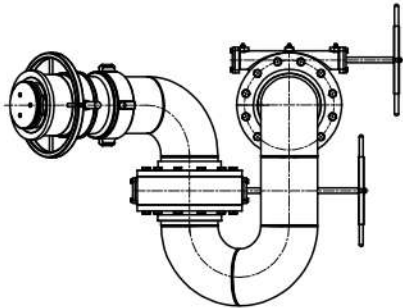
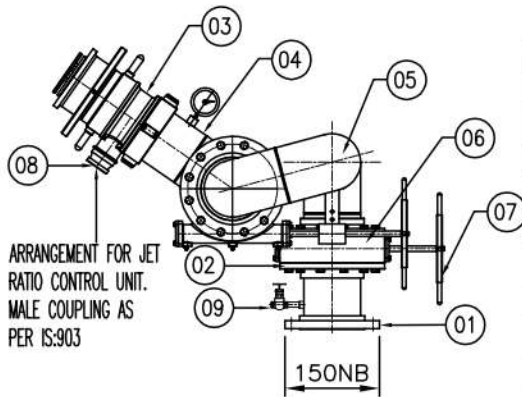
562-MKT-A1-S4

0

# IMEN DATIS ASIA



THIS DRAWING AND DESIGN IS A PROPERTY OF 'FIRETECH' AND MUST NOT BE COPIED OR LEND WITHOUT THEIR PERMISSION IN WRITING.



### MATERIAL OF CONSTRUCTION

SR.NO.	DESCRIPTION	MATERIAL
1	BASE FLANGE	ASTM A182 F316
2	SWIVEL JOINT	ASTM A351 CF8M(SS:316)
3	NOZZLE	ASTM A351 CF8M(SS:316)
4	PIPE	ASTM A312 TP316
5	BEND	ASTM A403 WP316
6	WORM RING	ASTM A351 CF8M(SS:316)
7	HANDLE	ASTM A351 CF8M(SS:316)
8	MALE COUPLING	SS:316
9	DRAIN VALVE	SS:316

### TECHNICAL DETAILS

1. MAX.WORKING PRESSURE:-12.1 Kg/Cm <sup>2</sup>
2. HYDRAULIC TEST PRESSURE:-23 Kg/Cm <sup>2</sup> FOR 5 MIN.
3. SPRAY ANGLE:-140°
4. FOAM EXPANSION RATIO 1:3 TO 1:4.
5. FOAM INDUCTION:-(-3-3.6%) WITH JET RATIO CONTROL UNIT
6. FLANGE DRILLING:- AS PER ANSI B16.5,150#
7. ROTATION:- HORIZONTAL-360°,VERTICAL- +90°,-15°
8. FINISH:-PAINTED FIRE RED TO SHADE NO:536 OF IS:5

### PERFORMANCE DETAILS

MONITOR MODEL	NOZZLE MODEL	FLANGE NB	NOZZLE (NB)	NOZZLE FLOW SETTING (GPM) @ 7 Kg/Cm <sup>2</sup>	2000 GPM		1000 GPM	
					VERTICAL THROW 7 Kg/Cm <sup>2</sup> @30'(MTR)		HORIZONTAL THROW 7 Kg/Cm <sup>2</sup> @30'(MTR)	
					WATER	FOAM	WATER	FOAM
HFLR-FM-150	AFM-VF-150	150	150	2000-1500-1000(+5%)GPM	14.5	12.5	64	56

- NOTES: 1) WORKING PRESSURE SPECIFIED IS AT INLET OF THE NOZZLE  
2) ALL DIMENSIONS ARE IN mm,UNLESS OTHERWISE SPECIFIED.



TITLE:-HIGH VOLUME LONG-RANGE FOAM-CUM-WATER  
MONITOR-2000-1500-1000GPM-STAINLESS STEEL(SS-316)

DRG.NO.	R
562-MKT-A2-S6	0