

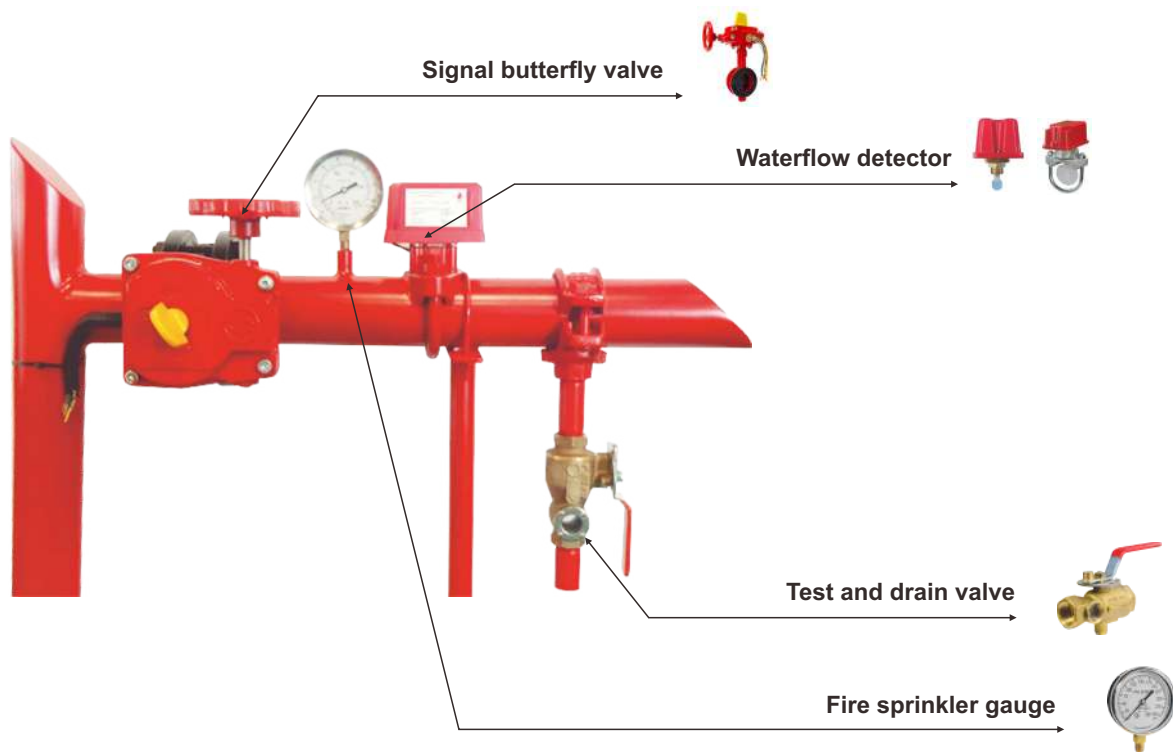


Zone control valve

021-46095133

Zone control valve (Floor control valve) is a combined unit of 4 parts: signal butterfly valve, waterflow indicator, pressure gauge and test & drain valve.

They are assembled on fire pipeline to separate the fire area into small distribution zone for indication and control. Because of fire sprinkler or test valve activation, the indicator detects water flow and transmits signal to control system. After fire suppression, butterfly valve gets signal, to indicate manual shut down the water flow for recovering the system.



Component specification

Butterfly valve	Test and drain valve	Waterflow detector	Fire sprinkler gauge
See TPMC catalog V11-V14 for BS / EN butterfly valve, V42-V45 for American butterfly valve	See TPMC catalog VC01	See TPMC catalog V86	See TPMC catalog V86

Others assembly units (Additional, not included in above 4 parts):

ERW or seamless steel tube	Electrical wire	Junction box
UL listed / FM approved, see TPMC catalog P series	UL listed or LPCB approved, see TPMC catalog C series	UL listed, see TPMC catalog C series



IMEN DATIS ASIA

Available size

Ref. No.	V7020	V7025	V7030	V7040
Size	DN50 (2") zone control valve assembly	DN65 (2-1/2") zone control valve assembly	DN80 (3") zone control valve assembly	DN100(4") zone control valve assembly
Standard assembly	Wafer butterfly valve, DN50 (2"), UL/FM	Wafer butterfly valve, DN65 (2-1/2"), UL/FM	Wafer butterfly valve, DN80 (3"), UL/FM	Wafer butterfly valve, DN100 (4"), UL/FM
	Water flow detector, DN50 (2), UL/FM	Water flow detector, DN65 (2-1/2"), UL/FM	Water flow detector, DN80 (3"), UL/FM	Water flow detector, DN100 (4"), UL/FM
	Test and drain valve, DN25 (1"), UL/FM	Test and drain valve, DN25 (1"), UL/FM	Test and drain valve, DN25 (1"), UL/FM	Test and drain valve, DN25 (1"), UL/FM
	Pressure gauge, DN8 (1/4"), UL/FM	Pressure gauge, DN8 (1/4"), UL/FM	Pressure gauge, DN8 (1/4"), UL/FM	Pressure gauge, DN8 (1/4"), UL/FM
Optional components	Flanged non-return valve, DN50 (2"), UL/FM	Flanged non-return valve, DN65 (2-1/2"), UL/FM	Flanged non-return valve, DN80 (3"), UL/FM	Flanged non-return valve, DN100 (4"), UL/FM
	Brass ball valve, DN15 (1/2"), UL/FM	Brass ball valve, DN15 (1/2"), UL/FM	Brass ball valve, DN15 (1/2"), UL/FM	Brass ball valve, DN15 (1/2"), UL/FM
	Pressure gauge buffer tube (Syphon), DN15 (1/2"), ISO	Pressure gauge buffer tube (Syphon), DN15 (1/2"), ISO	Pressure gauge buffer tube (Syphon), DN15 (1/2"), ISO	Pressure gauge buffer tube (Syphon), DN15 (1/2"), ISO

Ref. No.	V7050	V7060	V7080
Size	DN125(5") zone control valve assembly	DN150 (6") zone control valve assembly	DN200 (8") zone control valve assembly
Standard assembly	Wafer butterfly valve, DN125 (5"), UL/FM	Wafer butterfly valve, DN150 (6"), UL/FM	Wafer butterfly valve, DN200 (8"), UL/FM
	Water flow detector, DN125 (5"), UL/FM	Water flow detector, DN150 (6"), UL/FM	Water flow detector, DN200 (8"), UL/FM
	Test and drain valve, DN25 (1"), UL/FM	Test and drain valve, DN25 (1"), UL/FM	Test and drain valve, DN25 (1"), UL/FM
	Pressure gauge, DN8 (1/4"), UL/FM	Pressure gauge, DN8 (1/4"), UL/FM	Pressure gauge, DN8 (1/4"), UL/FM
Optional components	Flanged non-return valve, DN125 (5"), UL/FM	Flanged non-return valve, N150 (6"), UL/FM	Flanged non-return valve, DN200 (8"), UL/FM
	Brass ball valve, DN15 (1/2"), UL/FM	Brass ball valve, DN15 (1/2"), UL/FM	Brass ball valve, DN15 (1/2"), UL/FM
	Pressure gauge buffer tube (Syphon), DN15 (1/2"), ISO	Pressure gauge buffer tube (Syphon), DN15 (1/2"), ISO	Pressure gauge buffer tube (Syphon), DN15 (1/2"), ISO

Note: It is also available with other assembly type, such as grooved butterfly valve, grooved non-return valve, 2" test and drain valve, 1/4" ball valve, etc.

V70 /

WWW.IMENADA.COM

