

NFPA[®]

87

**Standard for
Fluid Heaters**

2018



IMPORTANT NOTICES AND DISCLAIMERS CONCERNING NFPA® STANDARDS

NOTICE AND DISCLAIMER OF LIABILITY CONCERNING THE USE OF NFPA STANDARDS

NFPA® codes, standards, recommended practices, and guides (“NFPA Standards”), of which the document contained herein is one, are developed through a consensus standards development process approved by the American National Standards Institute. This process brings together volunteers representing varied viewpoints and interests to achieve consensus on fire and other safety issues. While the NFPA administers the process and establishes rules to promote fairness in the development of consensus, it does not independently test, evaluate, or verify the accuracy of any information or the soundness of any judgments contained in NFPA Standards.

The NFPA disclaims liability for any personal injury, property, or other damages of any nature whatsoever, whether special, indirect, consequential or compensatory, directly or indirectly resulting from the publication, use of, or reliance on NFPA Standards. The NFPA also makes no guaranty or warranty as to the accuracy or completeness of any information published herein.

In issuing and making NFPA Standards available, the NFPA is not undertaking to render professional or other services for or on behalf of any person or entity. Nor is the NFPA undertaking to perform any duty owed by any person or entity to someone else. Anyone using this document should rely on his or her own independent judgment or, as appropriate, seek the advice of a competent professional in determining the exercise of reasonable care in any given circumstances.

The NFPA has no power, nor does it undertake, to police or enforce compliance with the contents of NFPA Standards. Nor does the NFPA list, certify, test, or inspect products, designs, or installations for compliance with this document. Any certification or other statement of compliance with the requirements of this document shall not be attributable to the NFPA and is solely the responsibility of the certifier or maker of the statement.

REVISION SYMBOLS IDENTIFYING CHANGES FROM THE PREVIOUS EDITION

Text revisions are shaded. A **Δ** before a section number indicates that words within that section were deleted and a **Δ** to the left of a table or figure number indicates a revision to an existing table or figure. When a chapter was heavily revised, the entire chapter is marked throughout with the **Δ** symbol. Where one or more sections were deleted, a **•** is placed between the remaining sections. Chapters, annexes, sections, figures, and tables that are new are indicated with an **N**.

Note that these indicators are a guide. Rearrangement of sections may not be captured in the markup, but users can view complete revision details in the First and Second Draft Reports located in the archived revision information section of each code at www.nfpa.org/docinfo. Any subsequent changes from the NFPA Technical Meeting, Tentative Interim Amendments, and Errata are also located there.

REMINDER: UPDATING OF NFPA STANDARDS

Users of NFPA codes, standards, recommended practices, and guides (“NFPA Standards”) should be aware that NFPA Standards may be amended from time to time through the issuance of a Tentative Interim Amendment (TIA) or corrected by Errata. An official NFPA Standard at any point in time consists of the current edition of the document together with any TIAs and Errata then in effect.

To determine whether an NFPA Standard has been amended through the issuance of Tentative Interim Amendments or corrected by Errata, go to www.nfpa.org/docinfo to choose from the list of NFPA Standards or use the search feature to select the NFPA Standard number (e.g., NFPA 13). The document information page provides up-to-date document-specific information as well as postings of all existing TIAs and Errata. It also includes the option to register for an “Alert” feature to receive an automatic email notification when new updates and other information are posted regarding the document.

IMPORTANT NOTICES AND DISCLAIMERS CONCERNING NFPA® STANDARDS

ADDITIONAL NOTICES AND DISCLAIMERS

Updating of NFPA Standards

Users of NFPA codes, standards, recommended practices, and guides (“NFPA Standards”) should be aware that these documents may be superseded at any time by the issuance of new editions or may be amended from time to time through the issuance of Tentative Interim Amendments or corrected by Errata. An official NFPA Standard at any point in time consists of the current edition of the document together with any Tentative Interim Amendments and any Errata then in effect. In order to determine whether a given document is the current edition and whether it has been amended through the issuance of Tentative Interim Amendments or corrected through the issuance of Errata, consult appropriate NFPA publications such as the National Fire Codes® Subscription Service, visit the NFPA website at www.nfpa.org, or contact the NFPA at the address listed below.

Interpretations of NFPA Standards

A statement, written or oral, that is not processed in accordance with Section 6 of the Regulations Governing the Development of NFPA Standards shall not be considered the official position of NFPA or any of its Committees and shall not be considered to be, nor be relied upon as, a Formal Interpretation.

Patents

The NFPA does not take any position with respect to the validity of any patent rights referenced in, related to, or asserted in connection with an NFPA Standard. The users of NFPA Standards bear the sole responsibility for determining the validity of any such patent rights, as well as the risk of infringement of such rights, and the NFPA disclaims liability for the infringement of any patent resulting from the use of or reliance on NFPA Standards.

NFPA adheres to the policy of the American National Standards Institute (ANSI) regarding the inclusion of patents in American National Standards (“the ANSI Patent Policy”), and hereby gives the following notice pursuant to that policy:

NOTICE: The user’s attention is called to the possibility that compliance with an NFPA Standard may require use of an invention covered by patent rights. NFPA takes no position as to the validity of any such patent rights or as to whether such patent rights constitute or include essential patent claims under the ANSI Patent Policy. If, in connection with the ANSI Patent Policy, a patent holder has filed a statement of willingness to grant licenses under these rights on reasonable and nondiscriminatory terms and conditions to applicants desiring to obtain such a license, copies of such filed statements can be obtained, on request, from NFPA. For further information, contact the NFPA at the address listed below.

Law and Regulations

Users of NFPA Standards should consult applicable federal, state, and local laws and regulations. NFPA does not, by the publication of its codes, standards, recommended practices, and guides, intend to urge action that is not in compliance with applicable laws, and these documents may not be construed as doing so.

Copyrights

NFPA Standards are copyrighted. They are made available for a wide variety of both public and private uses. These include both use, by reference, in laws and regulations, and use in private self-regulation, standardization, and the promotion of safe practices and methods. By making these documents available for use and adoption by public authorities and private users, the NFPA does not waive any rights in copyright to these documents.

Use of NFPA Standards for regulatory purposes should be accomplished through adoption by reference. The term “adoption by reference” means the citing of title, edition, and publishing information only. Any deletions, additions, and changes desired by the adopting authority should be noted separately in the adopting instrument. In order to assist NFPA in following the uses made of its documents, adopting authorities are requested to notify the NFPA (Attention: Secretary, Standards Council) in writing of such use. For technical assistance and questions concerning adoption of NFPA Standards, contact NFPA at the address below.

For Further Information

All questions or other communications relating to NFPA Standards and all requests for information on NFPA procedures governing its codes and standards development process, including information on the procedures for requesting Formal Interpretations, for proposing Tentative Interim Amendments, and for proposing revisions to NFPA standards during regular revision cycles, should be sent to NFPA headquarters, addressed to the attention of the Secretary, Standards Council, NFPA, 1 Batterymarch Park, P.O. Box 9101, Quincy, MA 02269-9101; email: stds_admin@nfpa.org.

For more information about NFPA, visit the NFPA website at www.nfpa.org. All NFPA codes and standards can be viewed at no cost at www.nfpa.org/docinfo.

Copyright © 2017 National Fire Protection Association®. All Rights Reserved.

NFPA® 87

Standard for

Fluid Heaters

2018 Edition

This edition of NFPA 87, *Standard for Fluid Heaters*, was prepared by the Technical Committee on Fluid Heaters. It was issued by the Standards Council on August 1, 2017, with an effective date of August 21, 2017, and supersedes all previous editions.

This edition of NFPA 87 was approved as an American National Standard on August 21, 2017.

Origin and Development of NFPA 87

The 2011 edition of NFPA 87 was the first edition of the document. In 2006, the Standards Council authorized the Technical Committee on Ovens and Furnaces to begin work on a new recommended practice on process heaters. The task force formed by the committee to develop the recommended practice comprised members of the Technical Committee on Ovens and Furnaces (NFPA 86, *Standard for Ovens and Furnaces*) and fire safety professionals from the community of fluid heater users and manufacturers.

The need for NFPA to develop a document on fluid heaters became apparent over a number of years as NFPA received requests for interpretation as to whether fluid heaters were covered by any existing NFPA codes and standards. The Technical Committee on Boiler and Combustion Systems specifically excludes process heaters used in chemical and petroleum manufacture from coverage by NFPA 85, *Boiler and Combustion Systems Hazards Code*. NFPA 86 does not exclude process heaters, but the Technical Committee on Ovens and Furnaces recommended the development of a new document that recognizes that process heaters are fundamentally different from ovens and furnaces.

NFPA 87 incorporates many safety recommendations that are consistent with requirements in NFPA 86 and NFPA 85, especially those related to hazards associated with the combustion of gaseous and liquid fuels. Additional recommendations have been added to NFPA 87 that address unique hazards associated with the combustible fluids being heated in these systems (e.g., pressure containment, flow and temperature monitoring, and mitigation of accidental fluid releases).

The 2015 edition of NFPA 87 included several changes to Chapter 3 due to the addition of definitions for *burner management system (BMS)* and *emergency shutoff valve (ESOV)* and other updates to definitions for consistency with NFPA 86. Changes to Chapter 6 intended to make the document consistent with NFPA 86 included ESOV requirements, emergency isolation valves, and overpressure protection. The Committee added procedures for placing equipment into service based on purging practices in NFPA 54 and the new NFPA 56. The committee added a requirement prohibiting manifold vent lines from different pressure levels based on NFPA 85. As a result of introducing definitions for BMS and combustion safeguard, the committee modified requirements for logic systems for both BMS logic and PLC systems. The committee completely revised requirements for Class F heaters in Chapter 9 and added new content for Chapters 10 and 11 on Class G and H heaters, respectively.

For the 2018 edition, NFPA 87 has transitioned from a recommended practice to a standard. After development of the document for two revision cycles, the technical committee decided the document was prepared to move from recommendations to requirements. During this process, several changes have been made to facilitate its use as a standard. The committee added nine new definitions to Chapter 3, extracted from NFPA 86, including *self-piloted burner*, *line pressure regulator*, *monitoring pressure regulator*, *series pressure regulator*, *service pressure regulator*, *flame rod*, *flame detector*, *supervised flame*, and *flame failure response time (FFRT)*. A definition for *authorized personnel* has been modified from NFPA 1901, and *qualified personnel* has been modified from NFPA 70.

In addition, the three types of heaters previously referenced in NFPA 87 (i.e., Class F, G, and H) have been combined into one chapter due to the similarity of the requirements for all three classes of heaters. Fluid mixture changes now need to be in accordance with heater manufacturers' recommendations, fluid manufacturers' recommendations, or third-party approved by the AHJ. Fluid type changes need to be in accordance with heater manufacturers' recommendations or third-party approved by the AHJ. New provisions in 8.2.9 require the use of two manual hardwired emergency switches — one located remotely and one located locally in reference to the fluid heater. Requirements in 8.5.2.5 now address the issue of false flame signal for flame sensing technologies. The PLC software section has been altered to now refer to the PLC logic programming instead of the general term *software*.

Finally, interlocks previously found in Chapter 9 have been moved to Chapter 8 with the other system interlocks. Chapter 9 now allows secondary catch/storage tanks, and safety PLC requirements have been aligned with NFPA 86. A new requirement for blanket gas low-pressure proving devices also has been added.

Technical Committee on Fluid Heaters

Algirdas Underys, *Chair*
A. Finkl & Sons Co., IL [U]

Richard J. Martin, *Secretary*
Martin Thermal Engineering, Inc., CA [SE]

Gary S. Andres, Liberty Mutual Insurance Company, MA [I]

Erik W. Christiansen, Exponent, Inc., CA [SE]

John Dauer, SCC, Inc., IL [M]

Joel D. Gaither, Weyerhaeuser NR Company, WA [U]

James G. (Jay) Hudson, J. G. Hudson & Associates, PC, NC [SE]

Ted Jablkowski, Fives North American Combustion, Inc., CT [M]

John F. Kane, The DuPont Company, Inc., NC [U]

Charles S. Macaulay, TUV SUD America Inc./Global Risk Consultants Corporation, WA [SE]

Bruce L. Mickelson, Honeywell International, Inc./Eclipse, MN [M]

James Oettinger, Paratherm, PA [M]

Matthew Paine, FM Global, MA [I]

John Pendergraft, Exotherm Corporation, TX [SE]

Kevin W. Ray, Moore Control Systems Inc., TX [SE]

Adriano Santos, Heatec Inc., TN [M]

John J. Stanley, Karl Dungs, Inc., MN [M]

Franklin R. Switzer, Jr., S-afe, Inc., NY [SE]

Francois Tanguay, Louisiana Pacific Canada Ltd., Canada [U]

Demetris T. Venizelos, Exterran, OK [U]

Melissa M. Wadkinson, Fulton Companies, NY [M]

Tom Wechsler, Wechsler Engineering & Consulting, Inc., GA [SE]

Peter J. Willse, XL Global Asset Protection Services, CT [I]

Alternates

Kevin J. Carlisle, Karl Dungs, Inc., MN [M]

(Alt. to John J. Stanley)

Jonathan Chandler, Heatec Inc., TN [M]

(Alt. to Adriano Santos)

D. Jason Darrell, Honeywell/Eclipse, Inc., IL [M]

(Alt. to Bruce L. Mickelson)

Ruby Evans, FM Global, MA [I]

(Alt. to Matthew Paine)

Amir Jokar, Exponent, Inc., CA [SE]

(Alt. to Erik W. Christiansen)

Eric Nette, NFPA Staff Liaison

Douglas S. Jones, Fulton Thermal Corporation, NY [M]

(Alt. to Melissa M. Wadkinson)

Kerry D. Miller, Louisiana Pacific Building Products, Inc., TN [U]

(Alt. to Francois Tanguay)

Mark F. Mooney, Liberty Mutual Insurance Company, MA [I]

(Alt. to Gary S. Andres)

Ken Nichols, Weyerhaeuser Company, WA [U]

(Alt. to Joel D. Gaither)

William M. Rucki, Fives North American Combustion, Inc., OH [M]

(Alt. to Ted Jablkowski)

This list represents the membership at the time the Committee was balloted on the final text of this edition. Since that time, changes in the membership may have occurred. A key to classifications is found at the back of the document.

NOTE: Membership on a committee shall not in and of itself constitute an endorsement of the Association or any document developed by the committee on which the member serves.

Committee Scope: Proposed Scope: The committee shall have primary responsibility for documents covering fluid heaters where the release of energy inside the heater indirectly heats a process fluid that is flowing under pressure. The committee shall not have responsibility for boilers (which are covered by NFPA 85); ovens and furnaces (which are covered by NFPA 86); fired heaters in petroleum refineries and petrochemical facilities (which are covered by API Standards and Recommended Practices); units that heat air for occupiable space or comfort; and LP-Gas vaporizers designed and installed in accordance with NFPA 58 and NFPA 59.

Contents

Chapter 1 Administration	87- 5	7.5 Inspection, Testing, and Maintenance.	87- 17
1.1 Scope.	87- 5	7.6 Record Retention.	87- 18
1.2 Purpose.	87- 5	7.7 Procedures.	87- 18
1.3 Application.	87- 5		
1.4 Retroactivity.	87- 5		
1.5 Equivalency.	87- 5		
1.6 Units and Formulas.	87- 5		
Chapter 2 Referenced Publications	87- 6	Chapter 8 Heating System Safety Equipment and Application	87- 18
2.1 General.	87- 6	8.1 Scope.	87- 18
2.2 NFPA Publications.	87- 6	8.2 General.	87- 18
2.3 Other Publications.	87- 6	8.3 Burner Management System Logic.	87- 19
2.4 References for Extracts in Mandatory Sections. ...	87- 6	8.4 Programmable Logic Controller Systems.	87- 19
Chapter 3 Definitions	87- 6	8.5 Safety Control Application for Fuel-Fired Heating Systems.	87- 19
3.1 General.	87- 6	8.6 Combustion Air Safety Devices.	87- 20
3.2 NFPA Official Definitions.	87- 6	8.7 Safety Shutoff Valves (Fuel Gas or Liquid Fuel). ..	87- 21
3.3 General Definitions.	87- 7	8.8 Fuel Pressure Switches (Gas or Liquid Fuel).	87- 21
Chapter 4 General	87- 9	8.9 Flame Supervision.	87- 22
4.1 Approvals, Plans, and Specifications.	87- 9	8.10 Liquid Fuel Atomization (Other than Mechanical Atomization).	87- 22
4.2 Safety Labeling.	87- 9	8.11 Liquid Fuel Temperature Limit Devices.	87- 22
4.3 Thermal Fluids and Process Fluids.	87- 9	8.12 Multiple Fuel Systems.	87- 22
Chapter 5 Location and Construction	87- 9	8.13 Air-Fuel Gas Mixing Machines.	87- 22
5.1 Location.	87- 9	8.14 Ignition of Main Burners — Fuel Gas or Liquid Fuel.	87- 22
5.2 Fluid Heater Design.	87- 10	8.15 Stack Excess Temperature Limit Interlock.	87- 22
5.3 Explosion Mitigation.	87- 11	8.16 Fluid Excess Temperature Limit Interlock.	87- 22
5.4 Ventilation and Exhaust System.	87- 11	8.17 Electrical Heating Systems.	87- 23
5.5 Mountings and Auxiliary Equipment.	87- 11	8.18 Additional Interlocks.	87- 23
5.6 Heating Elements and Insulation.	87- 12	Chapter 9 Heaters	87- 23
5.7 Heat Baffles and Reflectors.	87- 12	9.1 General.	87- 23
Chapter 6 Heating Systems	87- 12	9.2 Auxiliary Equipment.	87- 24
6.1 General.	87- 12	Chapter 10 Fire Protection	87- 25
6.2 Fuel Gas-Fired Units.	87- 12	10.1 General.	87- 25
6.3 Liquid Fuel-Fired Units.	87- 15	10.2 Types of Fire Protection Systems.	87- 25
6.4 Oxygen Enhanced Fuel-Fired Units.	87- 16	10.3 Inspection, Testing, and Maintenance of Fire Protection Equipment.	87- 26
6.5 Flue Product Venting.	87- 16	Annex A Explanatory Material	87- 26
6.6 Electrically Heated Units.	87- 16	Annex B Example Maintenance Checklist	87- 40
Chapter 7 Commissioning, Operations, Maintenance, Inspection, and Testing	87- 16	Annex C Steam Extinguishing Systems	87- 41
7.1 Scope.	87- 16	Annex D Informational References	87- 42
7.2 Commissioning.	87- 16	Index	87- 44
7.3 Training.	87- 17		
7.4 Operations.	87- 17		

NFPA 87
Standard for
Fluid Heaters

2018 Edition

IMPORTANT NOTE: This NFPA document is made available for use subject to important notices and legal disclaimers. These notices and disclaimers appear in all publications containing this document and may be found under the heading “Important Notices and Disclaimers Concerning NFPA Standards.” They can also be viewed at www.nfpa.org/disclaimers or obtained on request from NFPA.

UPDATES, ALERTS, AND FUTURE EDITIONS: New editions of NFPA codes, standards, recommended practices, and guides (i.e., NFPA Standards) are released on scheduled revision cycles. This edition may be superseded by a later one, or it may be amended outside of its scheduled revision cycle through the issuance of Tentative Interim Amendments (TIAs). An official NFPA Standard at any point in time consists of the current edition of the document, together with all TIAs and Errata in effect. To verify that this document is the current edition or to determine if it has been amended by TIAs or Errata, please consult the National Fire Codes® Subscription Service or the “List of NFPA Codes & Standards” at www.nfpa.org/docinfo. In addition to TIAs and Errata, the document information pages also include the option to sign up for alerts for individual documents and to be involved in the development of the next edition.

NOTICE: An asterisk (*) following the number or letter designating a paragraph indicates that explanatory material on the paragraph can be found in Annex A.

A reference in brackets [] following a section or paragraph indicates material that has been extracted from another NFPA document. As an aid to the user, the complete title and edition of the source documents for extracts in the recommendations sections of this document are given in Chapter 2 and those for extracts in the informational sections are given in Annex D. Extracted text may be edited for consistency and style and may include the revision of internal paragraph references and other references as appropriate. Requests for interpretations or revisions of extracted text should be sent to the technical committee responsible for the source document.

Information on referenced publications can be found in Chapter 2 and Annex D.

Chapter 1 Administration

1.1* Scope.

1.1.1 This standard covers fluid heaters and related equipment.

1.1.2 Within the scope of this standard, a fluid heater is considered to be any thermal fluid heater or process fluid heater with the following features:

- (1) Fluid is flowing under pressure.
- (2) Fluid is indirectly heated.
- (3) Release of energy from combustion of a liquid or gaseous fuel or an electrical source occurs within the unit.

Δ 1.1.3 This standard does not apply to the following:

- (1) Boilers (which are covered by NFPA 85 or ANSI/ASME CSD-1, *Controls and Safety Devices for Automatically Fired Boilers*)

- (2) Class A, B, C, or D ovens and furnaces (which are covered by NFPA 86)
- (3) Fired heaters in petroleum refineries and petrochemical facilities that are designed and installed in accordance with API STP 560, *Fired Heaters for General Refinery Services*; API RP 556, *Instrumentation and Control Systems for Fired Heaters and Steam Generators*; and API RP 2001, *Fire Protection in Refineries*
- (4) Fired heaters commonly called reformer furnaces or cracking furnaces in the petrochemical and chemical industries
- (5) Units that heat air for occupiable space or comfort
- (6) LP-Gas vaporizers designed and installed in accordance with NFPA 58
- (7)* Coal or other solid fuel-firing systems
- (8) Listed equipment with a heating system(s) that supplies a total input not exceeding 150,000 Btu/hr (44 kW)

1.2 Purpose. This standard provides requirements for fluid heaters to minimize the fire and explosion hazards that can endanger the fluid heater, the building, or personnel.

1.3* Application. This standard applies to new installations and to alterations or extensions of existing equipment.

1.4 Retroactivity. The provisions of this standard reflect a consensus of what is necessary to provide an acceptable degree of protection from the hazards addressed in this standard at the time the standard was issued.

1.4.1 Unless otherwise specified, the provisions of this standard do not apply to facilities, equipment, structures, or installations that existed or were approved for construction or installation prior to the effective date of the standard. Where specified, the provisions of this standard are retroactive.

1.4.2 In those cases where the authority having jurisdiction determines that the existing situation presents an unacceptable degree of risk, the authority having jurisdiction shall be permitted to apply retroactively any portions of this standard deemed appropriate.

1.4.3 The retroactive requirements of this standard shall be permitted to be modified if their application clearly would be impractical in the judgment of the authority having jurisdiction and only where it is clearly evident that a reasonable degree of safety is provided.

1.5* Equivalency. Nothing in this standard is intended to prevent the use of systems, methods, or devices of equivalent or superior quality, strength, fire resistance, effectiveness, durability, and safety over those recommended by this standard.

1.5.1 Technical documentation shall be submitted to the authority having jurisdiction to demonstrate equivalency.

1.5.2 The system, method, or device shall be approved for the intended purpose by the authority having jurisdiction.

1.6 Units and Formulas.

1.6.1 SI Units. Metric units of measurement in this standard are in accordance with the modernized metric system known as the International System of Units (SI).

1.6.2 Primary and Equivalent Values. If a value for a measurement as given in this standard is followed by an equivalent value in other units, the first stated value is the requirement. A given equivalent value might be approximate.

1.6.3 Conversion Procedure. SI units have been converted by multiplying the quantity by the conversion factor and then rounding the result to the appropriate number of significant digits.

Chapter 2 Referenced Publications

2.1 General. The documents or portions thereof listed in this chapter are referenced within this standard and shall be considered part of the requirements of this document.

2.2 NFPA Publications. National Fire Protection Association, 1 Batterymarch Park, Quincy, MA 02169-7471.

NFPA 10, *Standard for Portable Fire Extinguishers*, 2017 edition.

NFPA 11, *Standard for Low-, Medium-, and High-Expansion Foam*, 2016 edition.

NFPA 12, *Standard on Carbon Dioxide Extinguishing Systems*, 2015 edition.

NFPA 13, *Standard for the Installation of Sprinkler Systems*, 2016 edition.

NFPA 15, *Standard for Water Spray Fixed Systems for Fire Protection*, 2017 edition.

NFPA 17, *Standard for Dry Chemical Extinguishing Systems*, 2017 edition.

NFPA 17A, *Standard for Wet Chemical Extinguishing Systems*, 2017 edition.

NFPA 25, *Standard for the Inspection, Testing, and Maintenance of Water-Based Fire Protection Systems*, 2017 edition.

NFPA 31, *Standard for the Installation of Oil-Burning Equipment*, 2016 edition.

NFPA 54, *National Fuel Gas Code*, 2018 edition.

NFPA 56, *Standard for Fire and Explosion Prevention During Cleaning and Purging of Flammable Gas Piping Systems*, 2014 edition.

NFPA 58, *Liquefied Petroleum Gas Code*, 2018 edition.

NFPA 70®, *National Electrical Code®*, 2017 edition.

NFPA 79, *Electrical Standard for Industrial Machinery*, 2015 edition.

NFPA 85, *Boiler and Combustion Systems Hazards Code*, 2015 edition.

NFPA 86, *Standard for Ovens and Furnaces*, 2015 edition.

NFPA 750, *Standard on Water Mist Fire Protection Systems*, 2015 edition.

2.3 Other Publications.

2.3.1 API Publications. American Petroleum Institute, 1220 L Street, NW, Washington, DC 20005-4070.

API STD 560, *Fired Heaters for General Refinery Services*, 2007.

API RP 556, *Instrumentation and Control Systems for Fired Heaters and Steam Generators*, 1997.

API RP 2001, *Fire Protection in Refineries*, 2005.

2.3.2 ASME Publications. American Society of Mechanical Engineers, Two Park Avenue, New York, NY 10016-5990.

ANSI/ASME B31.1, *Power Piping*, 2007.

ANSI/ASME B31.3, *Process Piping*, 2008.

ANSI/ASME GSD-1, *Controls and Safety Devices for Automatically Fired Boilers*, 2006.

Boiler and Pressure Vessel Code, 2007.

2.3.3 ASTM Publications. ASTM International, 100 Barr Harbor Drive, P.O. Box C700, West Conshohocken, PA 19428-2959.

ASTM D396, *Standard Specifications for Fuel Oils*, 2009.

2.3.4 IEC Publications. International Electrotechnical Commission, 3, rue de Varembe, P.O. Box 131, CH-1211 Geneva 20, Switzerland.

IEC 61508, *Functional Safety of Electrical/Electronic/Programmable Electronic Safety-Related Systems*, 2010.

2.3.5 UL Publications. Underwriters Laboratories Inc., 333 Pfingsten Road, Northbrook, IL 60062-2096.

UL 795, *Standard for Commercial-Industrial Gas Heating Equipment*, 2011.

2.3.6 Other Publications.

Merriam-Webster's Collegiate Dictionary, 11th edition, Merriam-Webster, Inc., Springfield, MA, 2003.

2.4 References for Extracts in Mandatory Sections.

NFPA 54, *National Fuel Gas Code*, 2018 edition.

NFPA 70®, *National Electrical Code®*, 2017 edition.

NFPA 85, *Boiler and Combustion Systems Hazards Code*, 2016 edition.

NFPA 86, *Standard for Ovens and Furnaces*, 2015 edition.

NFPA 211, *Standard for Chimneys, Fireplaces, Vents, and Solid Fuel-Burning Appliances*, 2016 edition.

NFPA 820, *Standard for Fire Protection in Wastewater Treatment and Collection Facilities*, 2016 edition.

Chapter 3 Definitions

3.1 General. The definitions contained in this chapter shall apply to the terms used in this standard. Where terms are not defined in this chapter or within another chapter, they shall be defined using their ordinarily accepted meanings within the context in which they are used. *Merriam-Webster's Collegiate Dictionary*, 11th edition, shall be the source for the ordinarily accepted meaning.

3.2 NFPA Official Definitions.

3.2.1* Approved. Acceptable to the authority having jurisdiction.

3.2.2* Authority Having Jurisdiction (AHJ). An organization, office, or individual responsible for enforcing the requirements of a code or standard, or for approving equipment, materials, an installation, or a procedure.

3.2.3 Labeled. Equipment or materials to which has been attached a label, symbol, or other identifying mark of an organization that is acceptable to the authority having jurisdiction and concerned with product evaluation, that maintains periodic inspection of production of labeled equipment or materials, and by whose labeling the manufacturer indicates compliance with appropriate standards or performance in a specified manner.

3.2.4* Listed. Equipment, materials, or services included in a list published by an organization that is acceptable to the authority having jurisdiction and concerned with evaluation of products or services, that maintains periodic inspection of production of listed equipment or materials or periodic evaluation of services, and whose listing states that either the equipment, material, or service meets appropriate designated standards or has been tested and found suitable for a specified purpose.

3.2.5 Recommended Practice. A document that is similar in content and structure to a code or standard but that contains only nonmandatory provisions using the word “should” to indicate recommendations in the body of the text.

3.2.6 Shall. Indicates a mandatory requirement.

3.2.7 Should. Indicates a recommendation or that which is advised but not required.

3.2.8 Standard. An NFPA Standard, the main text of which contains only mandatory provisions using the word “shall” to indicate requirements and that is in a form generally suitable for mandatory reference by another standard or code or for adoption into law. Nonmandatory provisions are not to be considered a part of the requirements of a standard and shall be located in an appendix, annex, footnote, informational note, or other means as permitted in the NFPA Manuals of Style. When used in a generic sense, such as in the phrase “standards development process” or “standards development activities,” the term “standards” includes all NFPA Standards, including Codes, Standards, Recommended Practices, and Guides.

3.3 General Definitions.

N 3.3.1 Authorized Personnel. Those approved or assigned to perform specific types of duties or be at specific locations at a job site.

3.3.2 Automatic Fire Check. A flame arrester equipped with a check valve to shut off the fuel gas supply automatically if a backfire occurs. [86, 2015]

3.3.3 Backfire Arrester. A flame arrester installed in fully premixed air–fuel gas distribution piping to terminate flame propagation therein, shut off fuel supply, and relieve pressure resulting from a backfire. [86, 2015]

3.3.4 Burner. A device or group of devices used for the introduction of fuel and air into a fluid heater at the required velocities, turbulence, and concentration to maintain ignition and combustion of fuel.

3.3.4.1 Dual-Fuel Burner. A burner designed to burn either fuel gas or liquid fuel but not to burn both simultaneously.

N 3.3.4.2 Self-Piloted Burner. A burner in which the pilot fuel is issued from the same ports as the main flame or merges with the main flame to form a common flame envelope with a common flame base. [86, 2015]

3.3.5* Burner Management System. The field devices, logic system, and final control elements dedicated to combustion safety and operator assistance in the starting and stopping of fuel preparation and burning equipment and for preventing misoperation of and damage to fuel preparation and burning equipment.

3.3.6 Combustion Air. The air necessary to provide for the complete combustion of fuel and usually consisting of primary air, secondary air, and excess air. [211, 2016]

3.3.7 Combustion Safeguard. A safety device or system that responds to the presence or absence of flame properties using one or more flame detectors and provides safe start-up, operation, and shutdown of a burner under normal and abnormal conditions.

3.3.8 Combustion Safety Circuitry. That portion of the fluid heater control circuitry that contains the contacts, arranged in series ahead of the safety shutoff valve(s) holding medium, for the required safety interlocks and the excess temperature limit controller(s).

3.3.9 Controller.

3.3.9.1 Programmable Controller. A digital electronic system designed for use in an industrial environment that uses a programmable memory for the internal storage of user-oriented instructions for implementing specific functions to control, through digital or analog inputs and outputs, various types of machines or processes. [86, 2015]

3.3.9.2 Temperature Controller. A device that measures the temperature and automatically controls the input of heat into the fluid heater.

3.3.10 Emergency Shutoff Valve. A manual shutoff valve to allow the fuel to be turned off in an emergency.

3.3.11 Equipment Isolation Valve. A manual shutoff valve for shutoff of the fuel to each piece of equipment.

N 3.3.12 Flame Detector. A safety device directly responsive to flame properties that senses the presence or absence of flame using flame sensors. [86, 2015]

N 3.3.13 Flame Failure Response Time (FFRT). The period of time that starts with the loss of flame and ends with the deenergizing of the safety shutoff valve(s). [86, 2015]

N 3.3.14* Flame Rod. A sensor that employs an electrically insulated rod of temperature-resistant material that extends into the flame being supervised, with a voltage impressed between the rod and a ground connected to the nozzle or burner. [86, 2015]

3.3.15 Flammable Limit. The range of concentration of a flammable gas in air within which a flame can be propagated, with the lowest flammable concentration known as the lower flammable limit (LFL), and the highest flammable concentration known as the upper flammable limit (UFL).

3.3.16 Fluid Heater. A fluid heater is considered to be any thermal fluid heater or process fluid heater with the following features: (1) Fluid is flowing under pressure. (2) Fluid is indirectly heated. (3) Release of energy from combustion of a liquid or gaseous fuel or an electrical source occurs within the unit.

3.3.17 Fuel Gas. A gas used as a fuel source, including natural gas, manufactured gas, sludge gas, liquefied petroleum gas–air mixtures, liquefied petroleum gas in the vapor phase, and mixtures of these gases. [820, 2016]

3.3.18 Fuel Oil. Grades 2, 4, 5, or 6 fuel oils as defined in ASTM D396, *Standard Specifications for Fuel Oils*.

3.3.19 Gas Analyzer. A device that measures concentrations, directly or indirectly, of some or all components in a gas or mixture. [86, 2015]

▲ **3.3.20 Guarded.** Covered, shielded, fenced, enclosed, or otherwise protected by means of suitable covers, casings, barriers, rails, screens, mats, or platforms to remove the likelihood of approach or contact by persons or objects to a point of danger. [70:Article 100]

3.3.21* Hardwired. The method of interconnecting signals or interlocks to a logic system or between logic systems using a dedicated interconnection for each individual signal.

3.3.22 Interlock.

3.3.22.1 Excess Temperature Limit Interlock. A device designed to cut off the source of heat if the operating temperature exceeds a predetermined temperature set point.

3.3.22.2 Safety Interlock. A device required to ensure safe start-up and safe operation and to cause safe equipment shutdown.

3.3.23 Lower Flammable Limit (LFL). See 3.3.15, *Flammable Limits*.

3.3.24 Manufacturer. The entity that directs and controls any of the following: product design, product manufacturing, or product quality assurance; or the entity that assumes the liability for the product or provides the warranty for the product.

3.3.25 Mixer.

3.3.25.1 Air-Fuel Gas Mixer. A mixer that combines air and fuel gas in the proper proportions for combustion. [86, 2015]

3.3.25.2 Proportional Mixer. A mixer comprising an inspirator that, when supplied with air, draws all the fuel gas necessary for combustion into the airstream, and a governor, zero regulator, or ratio valve that reduces incoming fuel gas pressure to approximately atmospheric. [86, 2015]

3.3.26 Mixing Blower. A motor-driven blower to supply air-fuel gas mixtures for combustion through one or more fuel burners or nozzles on a single-zone industrial heating appliance or on each control zone of a multizone installation. Mixing machines operated at 10 in. w.c. (2.49 kPa) or less static pressure are considered mixing blowers. [86, 2015]

3.3.27 Mixing Machine. An externally powered mechanical device that mixes fuel and air and compresses the resultant mixture to a pressure suitable for delivery to its point of use. [86, 2015]

3.3.28 Operator. An individual trained and responsible for the start-up, operation, shutdown, and emergency handling of the fluid heater and associated equipment.

3.3.29 Pilot. A flame that is used to light the main burner. [86, 2015]

3.3.29.1 Interrupted Pilot. A pilot that is ignited and burns during light-off and is automatically shut off at the end of the trial-for-ignition period of the main burner(s). [86, 2015]

3.3.30 Pressure Regulator. Equipment placed in a gas line for reducing, controlling, and maintaining the pressure in that

portion of the piping system downstream of the [device]. [54, 2018]

N **3.3.30.1 Line Pressure Regulator.** A pressure regulator placed in a gas line between the service regulator and the appliance (equipment) regulator. [86, 2015]

N **3.3.30.2 Monitoring Pressure Regulator.** A pressure regulator in a nonregulated state and set in series with another pressure regulator for the purpose of automatically taking over, in an emergency, control of the pressure downstream of the regulator in cases where pressure exceeds a set maximum. [86, 2015]

N **3.3.30.3 Series Pressure Regulator.** A pressure regulator in series with one service or line pressure regulator. [86, 2015]

N **3.3.30.4 Service Pressure Regulator.** A pressure regulator installed by the serving gas supplier to reduce and limit the service line gas pressure to delivery pressure. [86, 2015]

3.3.31 Purge. The replacement of a flammable, indeterminate, or high-oxygen-bearing atmosphere with another gas that, when complete, results in a nonflammable final state. [86, 2015]

N **3.3.32 Qualified Personnel.** Those who have skills and knowledge related to the construction and operation of a fluid heating system, including installation, and have received safety training to recognize and avoid the hazards involved.

3.3.33 Resistance Heating System. A heating system in which heat is produced by current flow through a resistive conductor. [86, 2015]

3.3.34* Safe-Start Check. A test incorporated in a combustion safeguard that prevents start-up if a flame-detected condition exists due to component failure within the combustion safeguard or flame detector(s) due to the presence of actual or simulated flame. [86, 2015]

3.3.35 Safety Device. An instrument, a control, or other equipment that acts, or initiates action, to cause the [fluid heater] to revert to a safe condition in the event of equipment failure or other hazardous event. [86, 2015]

3.3.36 Safety Relay. A relay listed for safety service. [86, 2015]

3.3.37 Safety Shutoff Valve. A normally closed valve installed in the piping that closes automatically to shut off the fuel in the event of abnormal conditions or during shutdown.

3.3.38 Scf. One cubic foot of gas at 70°F (21°C) and 14.7 psia (an absolute pressure of 101 kPa). [86, 2015]

N **3.3.39 Supervised Flame.** A flame whose presence or absence is detected by a flame detector. [86, 2015]

3.3.40 Switch.

3.3.40.1 Closed Position Indicator Switch. A switch that indicates when a valve is within 0.040 in. (1 mm) of its closed position but does not indicate proof of closure. [86, 2015]

3.3.40.2 Differential Pressure Switch. A switch that is activated by a differential pressure that is detected by comparing the pressure at two different points.

3.3.40.3 Flow Switch. A switch that is activated by the flow of a fluid in a duct or piping system. [86, 2015]

3.3.40.4 Pressure Switch.

3.3.40.4.1 Atomizing Medium Pressure Switch. A pressure-activated switch arranged to effect a safety shutdown or to prevent the liquid fuel burner system from being actuated in the event of inadequate atomizing medium pressure.

3.3.40.4.2 High Fuel Pressure Switch. A pressure-activated switch arranged to effect a safety shutdown of the burner system in the event of abnormally high fuel pressure. [86, 2015]

3.3.40.4.3 Low Fuel Pressure Switch. A pressure-activated switch arranged to effect a safety shutdown of the burner system in the event of abnormally low fuel pressure. [86, 2015]

3.3.40.5* Proof-of-Closure Switch. A switch installed in a safety shutoff valve by the manufacturer that activates only after the valve is fully closed. [86, 2015]

3.3.41 Tank.

3.3.41.1 Expansion Tank. A reservoir that allows expansion of a liquid to occur as the liquid is heated.

3.3.42 Trial-for-Ignition Period (Flame-Establishing Period). The interval of time during light-off that a combustion safeguard allows the fuel safety shutoff valve to remain open before the flame detector is required to supervise the flame. [86, 2015]

3.3.43* Valve Proving System. A system used to check the closure of safety shutoff valves by detecting leakage. [86, 2015]

3.3.44 Vent Limiter. A fixed orifice that limits the escape of gas from a vented device into the atmosphere. [86, 2015]

Chapter 4 General

4.1 Approvals, Plans, and Specifications.

4.1.1 Before new equipment is installed or existing equipment is remodeled, complete plans, sequence of operations, and specifications shall be submitted for approval to the authority having jurisdiction.

4.1.1.1 Plans shall be drawn that show all essential details with regard to location, construction, ventilation, piping, and electrical safety equipment. A list of all combustion, control, and safety equipment giving manufacturer, type, and number shall be included.

4.1.1.2* Wiring diagrams and sequence of operations for all safety controls shall be provided.

4.1.2 Any deviation from this standard shall require special permission from the authority having jurisdiction.

4.1.3 Electrical.

Δ 4.1.3.1* All wiring shall be in accordance with *NFPA 70*, *NFPA 79*, and as described hereafter.

•

4.1.3.2* The installation of a fluid heater in accordance with this standard shall not in and of itself require a change to the classification of the fluid heater location.

N 4.1.3.3 Where seal leakage or diaphragm failure in a device can result in flammable gas or flammable liquid flow through a

conduit or cable to an electrical ignition source, a conduit seal or a cable type that is sealed shall be installed.

4.2 Safety Labeling.

4.2.1 A safety design data form or nameplate that states the operating conditions for which the fluid heater was designed, built, altered, or extended shall be accessible to the operator.

4.2.2 A warning label stating that the equipment shall be operated and maintained according to instructions shall be provided.

4.2.3 The warning label shall be affixed to the fluid heater or control panel.

4.3 Thermal Fluids and Process Fluids.

4.3.1* Mixtures of thermal or process fluids shall not be used unless such mixtures are in accordance with recommendations of the manufacturer of the heater or the fluid(s), or are third-party approved by the authority having jurisdiction.

4.3.2* Changes to the fluid type shall be in accordance with recommendations of the manufacturer of the heater, or third-party approved by the authority having jurisdiction.

Chapter 5 Location and Construction

5.1 Location.

5.1.1 General.

5.1.1.1* Fluid heaters and related equipment shall be located so as to protect personnel and buildings from fire or explosion hazards.

5.1.1.2 Fluid heaters shall be located so as to be protected from damage by external heat, vibration, and mechanical hazards.

5.1.1.3 Fluid heaters shall be located so as to make maximum use of natural ventilation, to minimize restrictions to adequate explosion relief, and to provide sufficient air supply for personnel.

5.1.1.4* Where fluid heaters are located in basements or enclosed areas, sufficient ventilation shall be supplied so as to provide required combustion air and to prevent the hazardous accumulation of vapors.

5.1.1.5 Fluid heaters designed for use with fuel gas having a specific gravity greater than air shall be located at or above grade and shall be located so as to prevent the escape of the fuel gas from accumulating in basements, pits, or other areas below the fluid heater.

5.1.1.6* Location of the fluid heater, piping, and related equipment shall consider the minimum pumpable viscosity of the fluid.

5.1.2 Structural Members of the Building.

5.1.2.1 Fluid heaters shall be located and erected so that the building structural members are not affected adversely by the maximum anticipated temperatures (*see 5.1.4.3*) or by the additional loading caused by the fluid heater.

5.1.2.2 Structural building members shall not pass through or be enclosed within a fluid heater.

5.1.3 Location in Regard to Stock, Processes, and Personnel.

5.1.3.1 Fluid heaters shall be located so as to minimize exposure to power equipment, process equipment, and sprinkler risers.

5.1.3.2 Unrelated stock and combustible materials shall be located at a distance from a fluid heater, its heating system, or ductwork so that the combustible materials will not be ignited, with a minimum separation distance of 2.5 ft (0.8 m).

5.1.3.3 Adequate clearance between heat transfer fluid piping and wood or other combustible construction materials shall be provided.

5.1.3.3.1 A minimum 1 in. (25 mm) clearance shall be provided for insulated piping with surface temperature below 200°F (93°C).

5.1.3.3.2 For insulated pipe whose surface temperature exceeds 200°F (93°C), suitable clearance to keep the surface temperature of nearby combustible construction materials below 160°F (71°C) shall be provided.

5.1.3.3.3 A minimum 18 in. (450 mm) clearance for uninsulated piping shall be provided.

5.1.3.4 Fluid heaters shall be located so as to minimize exposure of people to possible injury from fire, explosion, asphyxiation, and hazardous materials and shall not obstruct personnel travel to exitways.

△ 5.1.3.5* Fluid heaters shall be designed or located so as to prevent an ignition source to nearby flammable vapors, gases, dusts, and mists.

5.1.3.6 Equipment shall be protected from corrosive external processes and environments, including fumes or materials from adjacent processes or equipment that produce corrosive conditions when introduced into the fluid heater environment.

5.1.4 Floors and Clearances.

5.1.4.1 Space shall be provided above and on all sides for inspection, maintenance, and operational purposes.

5.1.4.2 In addition to the requirement in 5.1.4.1, where applicable, adequate space shall be provided for the installation of extinguishing systems and for the functioning of explosion venting.

5.1.4.3* Fluid heaters shall be constructed or located to keep temperatures at combustible floors, ceilings, and walls less than 160°F (71°C).

5.1.4.4 Floors in the area of mechanical pumps, liquid fuel burners, or other equipment using oil shall be provided with a noncombustible, nonporous surface to prevent floors from becoming soaked with oil.

5.1.4.5 Means shall be provided to prevent released fluid from flowing into adjacent areas or floors below.

5.1.5 **Manifolds and External Piping.** Manifolds and external piping shall be located to allow access for removal of tubes.

5.2* Fluid Heater Design.

5.2.1 Fluid heaters and related equipment shall be designed to minimize the fire hazard inherent in equipment operating at elevated temperatures.

5.2.2 Fluid heater components exposed simultaneously to elevated temperatures and air shall be constructed of noncombustible material.

5.2.3* Fluid heater structural members shall be designed to support the maximum loads of the fluid heater throughout the anticipated range of operating conditions.

5.2.4* Fluid heaters shall withstand the strains imposed by expansion and contraction, as well as static and dynamic mechanical loads and seismic, wind, and precipitation loads as applicable.

5.2.5 Provision shall be made for draining the fluid heater for maintenance and emergency conditions.

5.2.6 Fluid heaters and related equipment shall be designed and located to provide access for recommended inspection and maintenance.

5.2.6.1* Ladders, walkways, or access facilities shall be provided so that equipment can be operated or accessed for testing and maintenance.

5.2.6.2 Means shall be provided for recommended internal inspection by maintenance and other personnel.

5.2.7 Radiation shields, refractory material, and insulation shall be retained or supported so they do not fall out of place under designed use and maintenance.

5.2.8 External parts of fluid heaters that operate at temperatures in excess of 160°F (71°C) shall be guarded by location, guard rails, shields, or insulation to prevent accidental contact by personnel.

5.2.8.1 Openings or other parts of the fluid heater from which flames, hot gases, or fluids could be discharged shall be located or guarded to prevent injury to personnel.

5.2.8.2 Where it is impractical to provide adequate shields or guards required by 5.2.8, warning signs or permanent floor markings visible to personnel entering the area shall be provided.

5.2.9 Observation ports or other visual means for observing the operation of individual burners shall be provided and shall be protected from damage by radiant heat.

5.2.10 Pressure Relief Devices.

5.2.10.1 Each section of the fluid flow path that can exceed the design pressure shall be equipped with pressure relief.

5.2.10.2 Pressure relief shall be provided for fluid piping and tanks that can be isolated.

5.2.10.3 Fluid vented from a pressure relief device shall be directed to an approved location.

5.2.10.3.1 Vent piping shall be sized for the anticipated flow of vented fluid, which can be a two-phase mixture.

5.2.10.3.2 Horizontal piping in the vent line shall be sloped so that liquid does not accumulate.

5.2.10.3.3 Heat tracing of the vent line shall be considered for fluids having a minimum pour point above expected ambient temperatures.

5.2.11 The metal frames of fluid heaters shall be electrically grounded.

5.2.12 Fluid heaters shall be designed for relatively uniform heat flux to all heat transfer surfaces.

5.2.13 Heater components shall be designed to allow for thermal expansion.

5.2.14 Refractory and insulation shall be adequately supported by materials that are fit for the conditions.

5.2.15 Fluid heater tube materials shall be selected to accommodate the chosen fluid at the desired operating temperature, with sufficient protection against corrosion and erosion.

5.2.16 Heater pressure vessels operating at pressures greater than 15 psi (100 kPa) shall be stamped and protected with overpressure protection in accordance with ASME *Boiler and Pressure Vessel Code*, Section I or ASME Section VIII, Division 1 vessels.

5.2.17 For combustible fluids, seamless tubes and fittings shall be utilized.

Δ 5.2.18 Tubing within the heat transfer area shall have welded connections.

N 5.2.19 Tubing or piping outside the heat transfer area shall have either flanged or welded connections.

N 5.2.20 Threaded connections shall be permitted to be used outside the heat transfer area for instrument connections and pressure relief valve connections of 1¼ in. (32 mm) and smaller diameter only.

5.2.21 Low point drains and high point vents shall be accessible outside the heater.

5.2.22 The maximum unsupported length of tubes shall be such that tube stress does not exceed one-half of the stress to produce 1 percent creep in 10,000 hours.

5.2.23 Tube hangers that cannot be easily inspected and replaced shall be designed such that their stress does not exceed one-half of the stress to produce 1 percent creep in 10,000 hours.

Δ 5.2.24 Burners shall be designed to prevent flame impingement on tubes and tube supports when operating.

5.2.25 Fluid heaters shall be designed for a specific range of fluid viscosities, densities, flow rates, and velocities.

N 5.2.26 Fluid heaters shall not be operated outside the ranges specified in 5.2.25.

5.3* **Explosion Mitigation.** Explosion hazards shall be mitigated through one of the following methods:

- (1) Containment
- (2) Explosion relief
- (3) Location
- (4) Explosion suppression
- (5) Damage limiting construction

5.4* **Ventilation and Exhaust System.**

Δ 5.4.1* **Building Makeup Air.** A quantity of makeup air shall be admitted to fluid heater rooms and buildings to provide the air volume required for fluid heater combustion air.

5.4.2 **Fans and Motors.**

5.4.2.1 Electric motors that drive exhaust or recirculating fans shall not be located inside the fluid heater or ductwork.

5.4.2.2 Fluid heater fans shall be designed for the maximum anticipated temperature that they will be exposed to.

5.4.3 **Ductwork.**

Δ 5.4.3.1 Ventilating and exhaust systems, where applicable, shall be installed in accordance with NFPA 31 or NFPA 54, unless otherwise noted in this standard.

5.4.3.2 Wherever fluid heater exhaust ducts or stacks pass through combustible walls, floors, or roofs, noncombustible insulation, clearance, or both shall be provided to prevent combustible surface temperatures from exceeding 160°F (71°C).

5.4.3.3* Where ducts pass through fire resistance-rated or noncombustible walls, floors, or partitions, the space around the duct shall be sealed with noncombustible material to maintain the fire-resistance rating of the barrier.

Δ 5.4.3.4 Ducts shall be constructed entirely of sheet steel or other noncombustible material capable of meeting the intended installation and conditions of service.

N 5.4.3.5 The duct installation shall be protected where subject to physical damage.

5.4.3.6* No portions of the building shall be used as an integral part of the duct.

Δ 5.4.3.7* All ducts shall be made tight throughout and have no openings other than those required for the operation and maintenance of the system.

5.4.3.8 All ducts shall be braced and supported by metal hangers or brackets where required.

5.4.3.9 Stacks shall be properly braced and supported.

5.4.3.10 Hand holes for inspection or other purposes shall be equipped with tight-fitting doors or covers.

5.4.3.11 Exposed hot fan casings, fluid piping, and hot ducts [temperatures exceeding 160°F (71°C)] shall be guarded by location, guardrails, shields, or insulation to prevent injury to personnel.

5.4.3.12* Exhaust ducts shall not discharge near openings or other air intakes where effluents can be entrained and directed to locations creating a hazard.

5.5 **Mountings and Auxiliary Equipment.**

5.5.1 **Fluid Piping System.**

5.5.1.1 Piping and fittings shall be compatible with the fluid being used and with the system operating temperatures and pressures.

5.5.1.2 For fluid piping systems that operate above 15 psig (100 kPa), piping materials shall be in accordance with ANSI/ASME B31.1, *Power Piping*, or ANSI/ASME B31.3, *Process Piping*.

5.5.1.3 In applications where fluid leakage creates a hazard, all pipe connections shall be welded except as permitted in 5.5.1.3.1 and 5.5.1.3.2.

5.5.1.3.1* Flange connections shall be limited to pump, valve, boundary limit, spool, and equipment connections.

5.5.1.3.2 Threaded connections shall be limited to instruments and other miscellaneous connections less than or equal to 1.25 in. (32 mm).

5.5.1.4 Thread sealant shall be compatible with the fluid used and with the maximum operating temperature.

5.5.1.5 Seal and gasket materials shall be compatible with the fluid and with the operating temperature and pressure.

5.5.1.6 The system design shall accommodate the thermal expansion of the pipe.

Δ 5.5.1.7* The system shall be tested in accordance with the applicable piping code.

5.5.1.8 Thermal insulation used on pipes and equipment shall be selected for the intended purpose and for compatibility with the fluid.

5.5.1.8.1 Where there is a potential for fluid system leaks, the thermal insulation selected shall be nonabsorbent.

5.5.1.8.2 Insulation applied to system piping and equipment shall be applied only after a leakage or pressure test of the plant has been conducted.

5.5.1.8.3 Insulation shall be applied only after a full heating cycle.

5.5.1.9 Shielding shall be provided against hot fluid sprays in the event that a gasket or seal fails.

5.5.2 Pipes, valves, and manifolds shall be mounted so as to provide protection against damage by heat, vibration, and mechanical hazard.

5.5.3 Fluid heater systems shall have provisions such as motion stops, lockout devices, or other safety mechanisms to prevent injury to personnel during maintenance or inspection.

5.5.4 Instrumentation and control equipment shall meet the following criteria:

- (1) Be located for ease of observation, adjustment, and maintenance
- (2) Be protected from physical and thermal damage and other hazards

5.6 Heating Elements and Insulation.

5.6.1 Material for electric heating elements shall be suitable for the specified range of design conditions.

5.6.2 Internal electrical insulation material shall be suitable for the specified range of design conditions.

5.7 Heat Baffles and Reflectors.

5.7.1 To prevent fluid heater damage, baffles, reflectors, and internal component supports shall be designed to minimize warpage due to expansion and contraction.

5.7.2 To prevent fluid heater damage, baffles, reflectors, and internal component supports shall be of heat-resistant material that minimizes sag, rupture, or cracking under normal operating limits specified by the manufacturer.

5.7.3 Baffles and reflectors shall be accessible and removable for the purpose of cleaning and repairing.

Chapter 6 Heating Systems

6.1 General.

6.1.1 For the purposes of this chapter, the term *heating system* includes the heating source, the associated piping and wiring used to heat the enclosure, and the process fluid therein.

6.1.2 All components of the heating system and control cabinet shall be grounded.

6.1.3 Pilot burners shall be considered burners, and all provisions of Section 6.2 or Section 6.3 shall apply.

6.2* Fuel Gas-Fired Units.

6.2.1 Scope. Section 6.2 applies to the following:

- (1) Fluid heating systems fired with fuel gases such as the following:
 - (a) Natural gas
 - (b) Mixed gas
 - (c) Manufactured gas
 - (d) Liquefied petroleum gas (LP-Gas) in the vapor phase
 - (e) LP-Gas-air systems
- (2) Gas-burning portions of dual-fuel or combination burners

6.2.2 General. Burners, along with associated mixing, valving, and safety controls and other auxiliary components, shall be selected for the intended application, type, and pressure of the fuel gases to be used and temperatures to which they are subjected.

6.2.3 Combustion Air.

6.2.3.1 The fuel-burning system design shall provide a supply of suitable combustion air delivered in amounts prescribed by the fluid heater designer or burner manufacturer across the full range of burner operation.

6.2.3.2 Products of combustion shall not be mixed with the combustion air supply.

6.2.3.2.1 The requirement of 6.2.3.2 shall not prohibit the use of flue gas recirculation systems specifically designed to accommodate such recirculation.

6.2.3.3* Where primary or secondary combustion air is provided mechanically, combustion air flow or pressure shall be proven and interlocked with the safety shutoff valves so that fuel gas cannot be admitted prior to establishment of combustion air and so that the gas is shut off in the event of combustion air failure.

6.2.3.4 Where a burner register air adjustment is provided, adjustment shall include a locking device to prevent an unintentional change in setting.

6.2.4 Fuel Gas Supply Piping.

6.2.4.1* An emergency shutoff valve shall be provided that meets the following requirements:

- (1) It shall be remotely located away from the fluid heater so that fire or explosion at a fluid heater does not prevent access to the valve.
- (2) It shall be readily accessible.
- (3) It shall have permanently affixed visual indication of the valve position.

- (4) A removable handle shall be permitted, provided all the following requirements are satisfied:
- The valve position shall be clearly indicated whether the handle is attached or detached.
 - The valve handle shall be tethered to the gas main no more than 3 ft (1 m) from the valve in a manner that does not cause personnel safety issues and that allows trouble-free reattachment of the handle and operation of the valve without untethering the handle.
- (5) It shall be able to be operated from full open to full close and return without the use of tools.

▲ 6.2.4.2 Installation of LP-Gas storage and handling systems shall comply with NFPA 58.

▲ 6.2.4.3 Piping from the point of delivery to the equipment isolation valve shall comply with NFPA 54. (See 6.2.5.2.)

6.2.4.4 An equipment isolation valve shall be provided.

6.2.5 Equipment Fuel Gas Piping.

6.2.5.1 Equipment Isolation Valves. Equipment isolation valves shall meet the following requirements:

- They shall be provided for each piece of equipment.
- They shall have permanently affixed visual indication of the valve position.
- They shall be quarter-turn valves with stops.
- Wrenches or handles shall remain affixed to valves and shall be oriented with respect to the valve port to indicate the following:
 - When the handle is parallel to the pipe, it shall indicate an open valve.
 - When the handle is perpendicular to the pipe, it shall indicate a closed valve.
- They shall be readily accessible.
- Valves with removable wrenches shall not allow the wrench handle to be installed perpendicular to the fuel gas line when the valve is open.
- They shall be able to be operated from full open to full close and return without the use of tools.

▲ 6.2.5.2* Fuel gas piping materials shall be in accordance with NFPA 54.

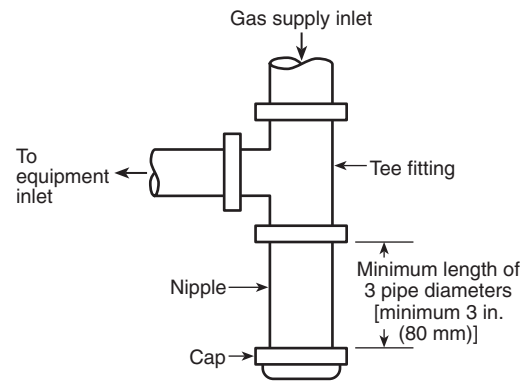
6.2.5.3 Fuel gas piping shall be sized to provide flow rates and pressures that maintain a stable flame over the burner operating range.

6.2.6 Control of Contaminants.

6.2.6.1 A sediment trap or other acceptable means of removing contaminants shall be installed downstream of the equipment isolation valve and upstream of all other fuel-gas system components.

6.2.6.2 Sediment traps shall have a vertical leg with a minimum length of three pipe diameters [minimum of 3 in. (80 mm)] of the same size as the supply pipe, as shown in Figure 6.2.6.2.

6.2.6.3* A gas filter or strainer shall be installed in the fuel gas piping and shall be located downstream of the equipment isolation valve and sediment trap and upstream of all other fuel gas system components.



▲ FIGURE 6.2.6.2 Method of Installing a Tee-Fitting Sediment Trap.

6.2.7 Pressure Regulators, Pressure Relief Valves, and Pressure Switches.

6.2.7.1 A pressure regulator shall be furnished wherever the plant supply pressure exceeds the burner operating parameters or the design parameters or wherever the plant supply pressure is subject to fluctuations, unless otherwise permitted by 6.2.7.2.

6.2.7.2 An automatic flow control valve shall be permitted to meet the requirement of 6.2.7.1, provided that it can compensate for the full range of expected source pressure variations.

6.2.7.3* Regulators, relief valves, and switches shall be vented to an approved location, and the following criteria also shall be met:

- Heavier-than-air flammable gases shall be vented outside the building to a location where the gas is diluted below its lower flammable limit (LFL) before coming in contact with sources of ignition or re-entering the building.
- Vents shall be designed to prevent the entry of water and insects without restricting the flow capacity of the vent.

6.2.7.4* Fuel gas regulators, ratio regulators, and zero governors shall not be required to be vented to an approved location in the following situations:

- Where backloaded from combustion air lines, air-gas mixture lines, or combustion chambers, provided that gas leakage through the backload connection does not create a hazard
- Where a listed regulator-vent limiter combination is used
- Where a regulator system is listed for use without vent piping

6.2.7.5* A pressure switch shall not be required to be vented if it employs a vent limiter rated for the service intended.

6.2.7.6 Vent lines from multiple fluid heaters shall not be manifolded together.

6.2.7.7 Vent lines from multiple regulators and switches of a single fluid heater, where manifolded together, shall be piped in such a manner that diaphragm rupture of one vent line does not backload the others.

6.2.7.7.1 Vents from systems operating at different pressure control levels shall not be manifolded together.

6.2.7.7.2 Vents from systems using different fuel sources shall not be manifolded together.

6.2.7.8 The cross-sectional area of the manifold line shall not be less than the greater of the following:

- (1) The cross-sectional area of the largest vent plus 50 percent of the sum of the cross-sectional areas of the additional vent lines
- (2) The sum of the cross-sectional areas of the two largest vent lines

6.2.7.9* A vent between safety shutoff valves, where installed, shall conform to the following requirements:

- (1) It shall not be combined with other vents.
- (2) It shall terminate to an approved location.

6.2.8 Overpressure Protection.

6.2.8.1 Overpressure protection shall be provided in either of the following cases:

- (1) When the supply pressure exceeds the pressure rating of any downstream component
- (2) When the failure of a single upstream line regulator or service pressure regulator results in a supply pressure exceeding the pressure rating of any downstream component

6.2.8.2 Overpressure protection shall be provided by any one of the following:

- (1) A series regulator in combination with a line regulator or service pressure regulator
- (2) A monitoring regulator installed in combination with a line regulator or service pressure regulator
- (3) A full-capacity pressure relief valve
- (4) An overpressure cutoff device, such as a slam-shut valve or a high pressure switch in combination with an adequately rated shutoff valve

6.2.8.3* When a relief valve is used to comply with 8.7.1.9, the relief valve shall be a full-capacity relief type.

6.2.8.4 Token relief valves and internal token relief valves shall not be permitted to be used as the only overpressure protection device.

6.2.9* Air-Fuel Gas Mixers. Subsection 6.2.9 shall apply only to mixtures of fuel gas with air.

6.2.9.1 Proportional Mixing.

(A) Piping shall be designed to provide a uniform mixture flow of pressure and velocity needed for stable burner operation.

Δ (B) Valves or other obstructions shall not be installed between a proportional mixer and burners, unless otherwise permitted by 6.2.9.2(C).

(C) Fixed orifices shall be permitted for purposes of balancing.

(D) Any field-adjustable device built into a proportional mixer (e.g., gas orifice, air orifice, ratio valve) shall incorporate a device to prevent unintentional changes in the setting.

(E) Where a mixing blower is used, safety shutoff valves shall be installed in the fuel gas supply and shall interrupt the fuel gas supply automatically when the mixing blower is not in operation or in the event of a fuel gas supply failure.

(F) Mixing blowers shall not be used with fuel gases containing more than 10 percent free hydrogen (H₂).

(G) Mixing blowers having a static delivery pressure of more than 10 in. w.c. (2.49 kPa) shall be considered mixing machines.

6.2.9.2 Mixing Machines.

(A)* Automatic fire checks shall be provided in piping systems that distribute flammable air-fuel gas mixtures from a mixing machine.

(B) The automatic fire check shall be installed at the burner inlet(s), and the manufacturer's installation guidelines shall be followed.

(C) A separate, manually operated gas valve shall be provided at each automatic fire check for shutting off the flow of an air-fuel mixture through the fire check after a flashback has occurred.

CAUTION: These valves shall not be reopened after a flashback has occurred until the fire check has cooled sufficiently to prevent re-ignition of the flammable mixture and has been properly reset.

(D) The valves recommended by 6.2.9.2(C) shall be located upstream of the inlets of the automatic fire checks.

(E)* A backfire arrester with a safety blowout device shall be installed in accordance with the manufacturer's instructions near the outlet of each mixing machine that produces a flammable air-fuel gas mixture.

(F) Where a mixing machine is used, safety shutoff valves shall be installed in the fuel gas supply and shall interrupt the fuel gas supply automatically when the mixing machine is not in operation or in the event of an air or fuel gas supply failure.

6.2.10 Fuel Gas Burners.

6.2.10.1 All burners shall maintain both the stability of the designed flame shape over the entire range of turndown encountered during operation where supplied with combustion air and the designed fuels in the designed proportions and in the designed pressure ranges.

6.2.10.2 Burners shall be used only with the fuels for which they are designed.

6.2.10.3 All pressures required for the operation of the combustion system shall be maintained within design ranges throughout the firing cycle.

6.2.10.4 Burners shall have the ignition source sized and located in a position that provides ignition of the pilot or main flame within the design trial-for-ignition period.

(A) Self-piloted burners shall have a transition from pilot flame to main flame.

(B) Burners that cannot be ignited at all firing rates shall have provision to reduce the burner firing rates during light-off to a lower level, which ensures ignition of the main flame without flashback or blowoff.

6.2.11 Fuel Ignition.

6.2.11.1* The ignition source (e.g., electric spark, hot wire, pilot burner, handheld torch) shall be applied at the design location with the designed intensity to ignite the air-fuel mixture.

6.2.11.2 Fixed ignition sources shall be mounted to prevent unintentional changes in location and in direction with respect to the main flame.

6.2.11.3 Pilot burners shall be considered burners, and all provisions of Section 6.2 shall apply.

6.2.12 Dual-Fuel and Combination Burners. Where fuel gas and liquid fuel are to be fired individually (dual-fuel) or simultaneously (combination), the provisions of Sections 6.2, 6.3, and 8.12 apply equally to the respective fuels.

6.3 Liquid Fuel-Fired Units.

6.3.1* Scope. Section 6.3 applies to the following:

- (1) Fluid heating systems fired with liquid fuels such as the following:
 - (a) No. 2 fuel oil (as specified by ASTM D396, *Standard Specifications for Fuel Oils*)
 - (b) No. 4 fuel oil (as specified by ASTM D396)
 - (c) No. 5 fuel oil (as specified by ASTM D396)
 - (d) No. 6 fuel oil (as specified by ASTM D396)
 - (e) Ethanol
- (2) Liquid fuel-burning portions of dual-fuel or combination burners

6.3.2 General. Burners, along with associated valving, safety controls, and other auxiliary components, shall be selected for the type and pressure of the liquid fuel to be used and for the temperatures to which they are subjected.

6.3.3* Combustion Air.

Δ 6.3.3.1 The liquid fuel-burning system design shall provide a supply of suitable combustion air delivered in amounts prescribed by the fluid heater designer or burner manufacturer across the full range of burner operation.

6.3.3.2 Products of combustion shall not be mixed with the combustion air supply.

6.3.3.3 The requirement of 6.3.3.2 shall not prohibit the use of flue gas recirculation systems specifically designed to accommodate such recirculation.

6.3.3.4* Where primary or secondary combustion air is provided mechanically, combustion air flow or pressure shall be proven and interlocked with the safety shutoff valves so that liquid fuel cannot be admitted prior to establishment of combustion air and so that the liquid fuel is shut off in the event of combustion air failure.

6.3.4 Fuel Supply Piping.

6.3.4.1 The liquid fuel supply to a fluid heater shall be capable of being shut off at a location remote from the fluid heater so that fire or explosion at the fluid heater does not prevent access to the liquid fuel shutoff.

6.3.4.2 The liquid fuel shutoff shall be by either of the following:

- (1) Emergency shutoff valve that meets the following requirements:
 - (a) It shall be remotely located away from the fluid heater so that fire or explosion at a fluid heater does not prevent access to this valve.
 - (b) It shall be readily accessible.

(c) It shall have permanently affixed visual indication of the valve position.

(d) A removable handle shall be permitted provided all the following requirements are satisfied:

- (i) The valve position is clearly indicated whether the handle is attached or detached.
- (ii) The valve handle is tethered to the liquid fuel supply line no more than 3 ft (1 m) from the valve in a manner that does not cause personnel safety issues and that allows trouble-free reattachment of the handle and operation of the valve without untethering the handle.

(2) Means for removing power to the positive displacement liquid fuel pump

6.3.4.3 Where a shutoff is installed in the discharge line of a fuel pump that is not an integral part of a burner, a pressure relief valve shall be connected to the discharge line between the pump and the shutoff valve and arranged to return surplus fuel to the supply tank or to bypass it around the pump, unless the pump includes an internal bypass.

6.3.4.4* All air from the supply and return piping shall be purged initially, and air entrainment in the fuel shall be minimized.

6.3.4.5 Suction, supply, and return piping shall be sized with respect to fuel pump capacity.

6.3.4.6* Where a section of fuel piping can be shut off at both ends, relief valves or expansion chambers shall be installed to release the pressure caused by thermal expansion of the fuel.

6.3.4.7 An equipment isolation valve shall be provided.

6.3.5 Equipment Fuel Piping.

6.3.5.1 Manual shutoff valves shall comply with the following:

- (1) Individual manual shutoff valves for equipment isolation shall be provided for shutoff of the fuel to each piece of equipment.
- (2) Manual shutoff valves shall be installed to avoid fuel spillage during servicing of supply piping and associated components.
- (3) Manual shutoff valves shall display a visual indication of the valve position.
- (4) Quarter-turn valves with removable wrenches shall not allow the wrench handle to be installed perpendicular to the liquid fuel line when the valve is open.
- (5) The user shall keep separate wrenches (handles) affixed to valves and keep the wrenches oriented with respect to the valve port to indicate the following:
 - (a) An open valve when the handle is parallel to the pipe
 - (b) A closed valve when the handle is perpendicular to the pipe
- (6) Valves shall be maintained in accordance with the manufacturer's instructions.

Δ 6.3.5.2 Liquid fuel piping materials shall be in accordance with NFPA 31.

6.3.5.3 Liquid fuel piping shall be sized to provide flow rates and pressure to maintain a stable flame over the burner operating range.

6.3.5.4* Filters and Strainers. A filter or strainer shall meet the following criteria:

- (1) Be selected for the maximum operating pressure and temperature anticipated
- (2) Be selected to filter particles larger than the most critical clearance in the liquid fuel system
- (3) Be installed in the liquid fuel piping system downstream of the equipment isolation valve and upstream of all other liquid fuel piping system components

6.3.5.5 Pressure Regulation. Where the fuel pressure exceeds that required for burner operation or where the fuel pressure is subject to fluctuations, either a pressure regulator or an automatic flow control valve that can compensate for the full range of expected source pressure variations shall be installed.

6.3.5.6* Pressure Gauges. Pressure gauges shall be isolated or protected from pulsation damage during operation of the burner system.

6.3.6 Fuel Atomization.

6.3.6.1* Fuel shall be atomized to droplet sizes required for combustion throughout the firing range.

6.3.6.2 The atomizing device shall be accessible for inspection, cleaning, repair, replacement, and other maintenance, as required.

6.3.7 Liquid Fuel Burners.

6.3.7.1 All burners shall maintain both the stability of the designed flame shape over the entire range of turndown encountered during operation where supplied with combustion air and the designed fuels in the designed proportions and in the designed pressure ranges.

6.3.7.2 All pressures required for the operation of the combustion system shall be maintained within design ranges throughout the firing cycle.

6.3.7.3 All burners shall be supplied with liquid fuel of the type and grade for which they have been designed and with liquid fuel that has been preconditioned, where necessary, to the viscosity required by the burner design. Burners shall be used only with the fuels for which they are designed.

6.3.7.4 Burners shall have the ignition source sized and located in a position that provides ignition of the pilot or main flame within the design trial-for-ignition period.

(A) Self-piloted burners shall have a transition from pilot flame to main flame.

(B) Burners that cannot be ignited at all firing rates shall have provision to reduce the burner firing rates during light-off to a lower level, which ensures ignition of the main flame without flashback or blowoff.

6.3.7.5 If purging of fuel passages upon termination of a firing cycle is required, it shall be done prior to shutdown, with the initial ignition source present and with all associated fans and blowers in operation.

6.3.8 Fuel Ignition.

6.3.8.1* The ignition source shall be applied at the design location with the design intensity to ignite the air–fuel mixture.

6.3.8.2 Fixed ignition sources shall be mounted so as to prevent unintentional changes in location and in direction with respect to the main flame.

6.3.9 Dual-Fuel and Combination Burners. Where fuel gas and liquid fuel are fired individually (dual-fuel) or simultaneously (combination), the provisions of Sections 6.2, 6.3, and 8.12 shall apply equally to the respective fuels.

Δ **6.4 Oxygen Enhanced Fuel–Fired Units.** For guidance regarding oxygen enhanced fuel–fired units, refer to NFPA 86.

6.5 Flue Product Venting. Means shall be provided to ensure ventilation of the products of combustion from fuel-fired equipment.

6.6 Electrically Heated Units.

6.6.1 Scope. Section 6.6 applies to all types of heating systems where electrical energy is used as the source of heat.

6.6.2 Safety Equipment. Safety equipment, including flow interlocks, time relays, and temperature switches, shall be in accordance with Chapter 8.

Δ **6.6.3 Electrical Installation.** All parts of the electrical installation shall be in accordance with NFPA 70.

6.6.4 Resistance Heating Systems.

Δ **6.6.4.1** The provisions of 6.6.4 shall apply to resistance heating systems.

6.6.4.2 Resistance heating systems shall be constructed in accordance with the following:

- (1) The heater housing shall be constructed so as to provide access to heating elements and wiring.
- (2) Heating elements and insulators shall be supported securely or fastened so that they do not become easily dislodged from their intended location.
- (3) Heating elements that are electrically insulated and that are supported by a metallic frame shall have the frame electrically grounded.
- (4) Open-type resistor heating elements shall be supported by electrically insulated hangers and shall be secured to prevent the effects of motion induced by thermal stress, which could result in adjacent segments of the elements touching one another, or the effects of touching a grounded surface.
- (5) External parts of heaters that are energized at voltages that could be hazardous as specified in NFPA 70 shall be guarded.

Chapter 7 Commissioning, Operations, Maintenance, Inspection, and Testing

7.1 Scope. Chapter 7 applies to safety systems and their application to fluid heaters.

7.2 Commissioning.

7.2.1* Commissioning shall be required for all new installations or for any changes that affect the safety system.

7.2.2 All apparatus shall be installed and connected in accordance with the system design.

7.2.3 The fluid heater shall not be released for operation before the installation and testing of the required safety systems have been successfully completed.

7.2.4 Any changes to the original design made during commissioning shall be reflected in the documentation.

7.2.5* Set points of all safety interlock settings shall be documented.

7.2.6* Where fire protection systems are used, a test of the fire protection system shall be performed to verify proper functioning of all interlocks and actuators, where feasible.

7.2.7 Where fire protection systems are used, it shall be verified that distribution piping for the extinguishing agent is unobstructed.

7.2.8* If hazardous conditions could result from the presence of air, water, and other contaminants, they shall be removed from the fluid system prior to charging.

7.2.9* The fluid shall be added to the heater system according to the heater manufacturer's instructions.

7.2.10* Initial preheating and operation of the heater shall be conducted according to the heater manufacturer's instructions.

7.2.11 Minimum fluid flow shall be established before the burner is operated.

7.2.12* A confirmed source of flammable gas shall be provided to the inlet of the equipment isolation valve(s) (see 6.2.5.1) each time a combustible gas supply is placed into service or restored to service.

7.3 Training.

7.3.1* Personnel who operate, maintain, or supervise the fluid heater shall be thoroughly instructed and trained in their respective job functions under the direction of a qualified person(s).

7.3.2 Personnel who operate, maintain, and supervise the fluid heater shall be required to demonstrate an understanding of the equipment, its operation, and the practice of safe operating procedures in their respective job functions.

7.3.3 Personnel who operate, maintain, and supervise the fluid heater shall receive regularly scheduled refresher training and shall demonstrate understanding of equipment, its operation, and practice of safe operating procedures in the respective job function.

Δ 7.3.4* The training program shall cover start-up, shutdown, and lockout procedures in detail.

7.3.5 The training program shall be kept current with changes in equipment and operating procedures, and training materials shall be available for reference.

7.4 Operations.

7.4.1 The fluid heater shall be operated in accordance with the design parameters.

Δ 7.4.2 Operating instructions that include all of the following shall be provided for the system design:

- (1) Design limits (maximum and minimum) on process parameters such as firing rate, turndown, fluid flow rates, and fluid characteristics

- (2) Schematic piping and wiring diagrams and instrument configurations
- (3) Startup procedures
- (4) Shutdown procedures
- (5) Emergency procedures occasioned by loss of essential utilities, such as electric power, instrument air, and inert gas
- (6) Emergency procedures occasioned by process upsets, such as low fluid flow, excess firebox temperature, and indicators of fluid-fed fires
- (7) Maintenance procedures, including interlock and valve tightness testing

7.4.3* When the original equipment manufacturer no longer exists, the user shall develop inspection, testing, and maintenance procedures.

7.4.4 Operating procedures shall be established that cover normal conditions, emergency conditions, and, where used, the use of fire protection equipment.

7.4.4.1 Operating procedures shall be directly applicable to the equipment involved and shall be consistent with safety requirements and the manufacturer's recommendations.

7.4.4.2 Plant operating procedures shall be kept current with changes in equipment and processes.

7.4.4.3 Where different modes of operation are possible, plant operating procedures shall be prepared for each operating mode and for switching from one mode to another.

7.4.5 Personnel shall have access to operating instructions at all times.

7.4.6 Safety devices shall not be removed or rendered ineffective.

7.4.7* The system shall be operated within the limits specified by the manufacturer of the heat transfer fluid and by the manufacturer of the heater.

7.5 Inspection, Testing, and Maintenance.

7.5.1 Safety devices shall be maintained in accordance with the manufacturer's instructions.

7.5.2 It shall be the responsibility of the fluid heater manufacturer to provide instructions for inspection, testing, and maintenance.

Δ 7.5.3* For recirculating fluid systems, the instructions in 7.5.2 shall include instructions for inspection, testing, and maintenance of the fluid.

Δ 7.5.3.1 If indications of fluid overheating or contamination are observed, an investigation shall be performed to evaluate and eliminate the cause of the overheating and contamination.

N 7.5.3.2 The fluid shall be taken from the heater and evaluated.

7.5.3.3 If there are indications that the material being heated is infiltrating into the fluid loop, an investigation shall be performed to identify the internal leakage point.

7.5.3.4 If the fluid testing results indicate an unacceptable level of degradation or contamination, the fluid shall be replaced.

7.5.4 It shall be the responsibility of the user to establish, schedule, and enforce the frequency and extent of the inspection, testing, and maintenance program, as well as the corrective action to be taken.

7.5.5* A test of the fire protection system, where used, to verify proper functioning of all interlocks and actuators shall be performed at least annually.

7.5.6 Fluid and fuel leaks shall be repaired promptly.

7.5.7 Fluid spills and releases shall be cleaned promptly, and fluid-soaked insulation shall be replaced.

7.5.8* Pressure relief valves shall be tested in accordance with applicable codes and regulations.

7.5.9 Cleaning of the inside or outside of heater tubes shall not adversely affect tube integrity.

7.5.10 All safety interlocks shall be tested for function at least annually.

7.5.11* The set point of temperature, pressure, or flow devices used as safety interlocks shall be verified at least annually.

7.5.12 Safety device testing shall be documented at least annually.

7.5.13 Explosion relief devices, if installed, shall be visually inspected at least annually to ensure that they are unobstructed and properly labeled.

•
 ▲ 7.5.14* Valve seat leakage testing of the safety shutoff valve and valve proving systems shall be performed in accordance with the manufacturer's instructions.

■ 7.5.14.1 Testing frequency shall be at least annually.

■ 7.5.14.2 The installation of a valve proving system or a valve with proof of closure shall not replace the requirement for seat leakage testing in 7.5.14.

7.5.15 Manual shutoff valves shall be maintained in accordance with the manufacturer's instructions.

7.5.16* Lubricated manual shutoff valves shall be lubricated and subsequently leak tested for valve closure at least annually.

▲ 7.5.17 The temperature set point and activation of the excess temperature limit interlock shall be verified at least annually.

7.5.18 Wherever any safety interlock is replaced, it shall be tested for function.

7.5.19 Wherever any temperature, pressure, or flow device used as a safety interlock is replaced, the set point setting shall be verified.

7.5.20 An inspection shall be completed at least annually to verify that all designed safety interlocks are present and have not been bypassed or rendered ineffective.

7.5.21* When a quantity of flammable gas that can result in a hazardous condition is released as part of installation, commissioning, testing, maintenance, or decommissioning, the gas shall be vented to an approved location.

7.6 Record Retention. Records of inspection, testing, and maintenance activities shall be retained for a period of 1 year or until the next inspection, testing, or maintenance activity, whichever is longer.

7.7* Procedures. The user's operational and maintenance program shall include procedures that apply to entry into equipment in accordance with all applicable regulations.

Chapter 8 Heating System Safety Equipment and Application

8.1 Scope.

8.1.1 Chapter 8 applies to safety equipment and its application to the fluid heater heating system.

8.1.2 Section 8.3 shall be applied to all safety controls included in this standard.

8.1.3* For the purpose of this chapter, the term *heating system* includes the heating source, associated piping, wiring, and controls used to heat the fluid heater and the fluid therein.

8.2 General.

8.2.1 The requirements of Chapter 8 shall not apply to thermal liquid heaters with fuel input ratings less than 12,500,000 Btu/hr (3.7 MW) that conform with ASME CSD-1, *Controls and Safety Devices for Automatically Fired Boilers*, or with UL 795, *Standard for Commercial-Industrial Gas Heating Equipment*.

8.2.2 All safety devices shall meet one of the following criteria:

- (1) Be listed for the service intended
- (2) Be approved, where listed devices are not available
- (3) Be programmable controllers applied in accordance with Section 8.4

■ 8.2.2.1* Flame rods shall not be required to meet the requirements in 8.2.2.

8.2.3 Safety devices shall be applied and installed in accordance with this standard and the manufacturer's instructions.

8.2.4 Electric relays shall not be used as substitutes for electrical disconnects, and safety shutoff valves shall not be used as substitutes for manual shutoff valves.

8.2.5 Regularly scheduled inspection, testing, and maintenance of all safety devices shall be performed. (See Section 7.5.)

8.2.6 Safety devices shall be installed, used, and maintained in accordance with the manufacturer's instructions.

8.2.7 Safety devices shall be located or guarded to protect them from physical damage.

8.2.8 Safety devices shall not be bypassed electrically or mechanically.

8.2.8.1 The requirement in 8.2.8 shall not prohibit safety device testing and maintenance in accordance with 8.2.5. Where a system includes a "built-in" test mechanism that bypasses any safety device, it shall be interlocked to prevent operation of the system while the device is in the test mode, unless listed for that purpose.

8.2.8.2 The requirement in 8.2.8 shall not prohibit a time delay applied to the action of a pressure-proving, flow-proving, or proof-of-closure safety switch, where the following conditions exist:

- (1) There is an operational need demonstrated for the time delay.
- (2) The use of a time delay is acceptable to the heater manufacturer.

- (3) The time delay feature is not adjustable beyond 5 seconds and does not serve more than one pressure-proving or proof-of-closure safety switch.
- (4) The time delay feature is not adjustable beyond 10 seconds for process fluid flow-proving safety switches.
- (5) The time from an abnormal pressure or flow condition until the holding medium is removed from the safety shutoff valves does not exceed 5 seconds.

8.2.9* Manual Emergency Switch.

N 8.2.9.1 A hardwired manual emergency switch at a local location shall be provided to initiate a safety shutdown of the entire fluid heater system.

N 8.2.9.2 A hardwired manual emergency switch at a remote location shall be provided to initiate a safety shutdown of the entire fluid heater system.

8.2.10 Shutdown of the heating system by any safety feature or safety device shall require manual intervention of an operator for re-establishment of normal operation of the system.

8.2.11 Where transmitters are used in place of switches for safety functions, the following shall apply:

- (1) The transmitter shall be safety integrity level (SIL) 2 capable.
- (2) Transmitter failure shall be detected and initiate a safety shutdown.
- (3) The transmitter shall be dedicated to safety service unless listed for simultaneous process and safety service.

8.3* Burner Management System Logic.

8.3.1 General.

8.3.1.1 Purge, ignition trials, and other burner safety sequencing shall be performed using either devices listed for such service or programmable controllers used in accordance with Section 8.4.

8.3.1.2 The activation of any safety interlock recommended in Chapter 8 shall result in a safety shutdown.

8.3.1.3 Safety interlocks shall meet one or more of the following:

- (1) Be connected to a combustion safeguard
- (2) Be hardwired without relays in series ahead of the controlled device
- (3) Be connected to an input of a programmable controller logic system complying with Section 8.4
- (4) Be connected to a relay that represents a single safety interlock configured to initiate safety shutdown in the event of power loss
- (5) Be connected to a listed safety relay that represents one or more safety interlocks and initiates safety shutdown upon power loss

8.3.1.4* Electrical power for safety control circuits shall be dc or single-phase ac, 250 volt maximum, one-side grounded, with all breaking contacts in the ungrounded, fuse-protected, or circuit breaker-protected line.

8.4* Programmable Logic Controller Systems.

8.4.1 Programmable logic controller (PLC)-based systems listed for combustion safety service shall be used in accordance with the listing requirements and the manufacturer's instructions.

Δ 8.4.2* Where PLCs are not listed for combustion safety service or as a combustion safeguard, the PLC and its associated input and output (I/O) used to perform safety functions shall be as follows:

- (1) Third-party certified to IEC 61508, *Functional Safety of Electrical/Electronic/Programmable Electronic Safety-Related Systems*, safety integrity level (SIL) 2 or greater
- (2) Applied to achieve at least a SIL 2 capability per the manufacturer's safety manual

8.4.3 General.

(A) Before the PLC is placed in operation, documentation shall be provided that confirms that all related safety devices and safety logic are functional.

Δ (B) All changes to hardware or software shall be documented and maintained in a file that is separate from the PLC.

(C) System operation shall be tested and verified for compliance with the design criteria when the PLC is replaced, repaired, or updated.

(D) The control system shall have at least one manual emergency switch that initiates a safety shutdown.

8.4.4 PLC Logic Programs.

8.4.4.1 The PLC safety-related logic shall be logically independent from non-safety-related logic.

8.4.4.2* Access to the PLC and its logic shall be restricted to authorized and qualified personnel only.

8.4.4.3 Software shall be documented as follows:

- (1) Labeled to identify elements or groups of elements containing safety software
- (2) Labeled to describe the function of each element containing safety software

8.4.4.4 A listing of the programs with documentation shall be available.

N 8.4.5* Safety PLCs. Where used for combustion safety service, safety PLCs shall have the following characteristics:

- (1) The processor and the I/O shall be listed for control reliable service with a SIL rating as required by 8.4.2.
- (2) Access to safety-related logic shall be separate from access to nonsafety logic.
- (3) Access to PLC logic dedicated to safety functions shall be embedded in safety logic code and locked to prevent changes by anyone other than authorized and qualified personnel.
- (4) All safety function sensors and final elements shall be independent of operating sensors and final elements.
- (5) Revisions to the safety logic or safety-related set points after commissioning shall require a documented management-of-change procedure to justify and document any changes to PLC safety-related logic

8.5 Safety Control Application for Fuel-Fired Heating Systems.

8.5.1 Pre-Ignition Purging. Prior to each heating system start-up, provision shall be made for the removal of all flammable vapors and gases that have entered the heating chambers during the shutdown period.

Δ 8.5.1.1 Mechanical Purging. When a combustion air blower or exhaust blower is provided, a timed pre-ignition purge shall be provided that incorporates all of the following:

- (1) At least four system volumes of fresh air or inert gas shall be introduced during the purging cycle.
- (2) The system volume shall include the combustion chambers and all other passages that handle the recirculation and exhaust of products of combustion to the stack inlet.
- (3) All passages from the air inlet to the heater stack inlet shall be purged.
- (4) To begin the timed pre-ignition purge interval, all of the following conditions shall be satisfied:
 - (a) The minimum required pre-ignition purge airflow shall be proved and interlocked.
 - (b) Fluid heaters with total pilot capacity over 400,000 Btu/hr (117 kW) shall have at least one safety shutoff valve required by 8.7.2.2 proved closed and interlocked between all pilot burners and the fuel supply.
 - (c) Fluid heaters with total capacity over 400,000 Btu/hr (117 kW) shall have at least one safety shutoff valve proved closed and interlocked between all main burners and the fuel supply.
- (5) The minimum required pre-ignition purge airflow shall be proved and interlocked and maintained throughout the timed pre-ignition purge interval.
- (6) Failure to maintain the minimum required pre-ignition purge airflow shall stop the pre-ignition purge and reset the purge timer.

8.5.1.1.1 Prior to the re-ignition of a burner after a burner shutdown or flame failure, a pre-ignition purge shall be accomplished.

CAUTION: Repeated ignition attempts can result in a combustible concentration greater than 25 percent of the LFL. Liquid fuels can accumulate, causing additional fire hazards.

8.5.1.1.2 Repeating the pre-ignition purge on any fuel-fired system shall not be required where all of the following conditions are satisfied:

- (1) Each burner and pilot is supervised by a combustion safeguard in accordance with Section 8.9.
- (2) Each burner system is equipped with safety shutoff valves in accordance with Section 8.7.
- (3) At least one burner remains operating in the common combustion chamber of the burner to be re-ignited, and the burner remaining in operation provides ignition without explosion of any unintended release of fuel through the other burners not in operation.
- (4) All of the following conditions are satisfied (does not apply to fuel oil systems):
 - (a) The number of safety shutoff valves required to close in Section 8.7 will close between the burner system and the fuel gas supply when that burner system is off.
 - (b) Safety shutoff valve seat leak testing is performed on at least a semiannual basis.
 - (c) The burner system uses natural gas, butane, or propane fuel gas.

(d)* It can be demonstrated, based on the leakage rate, that the combustible concentration in the heating chamber and all other passages that handle the recirculation and exhaust of products of combustion cannot exceed 25 percent of the LFL.

(e) The minimum airflow used in the LFL calculation in 8.5.1.1.2(4)(d) is proved and maintained during the period the burner(s) are off.

8.5.1.2 Natural Draft Purging.

N 8.5.1.2.1 When no combustion air blower or exhaust blower is provided, a natural draft purge shall be permitted provided all of the following conditions are satisfied:

- (1)* A permanently installed, interlocked combustible gas analyzer is provided that samples the firebox atmosphere in a location selected to account for the characteristics of the heater and the fuel(s) used:
- (2) Means are provided for proving and interlocking the inlet air registers and outlet dampers in the fully open position.

8.5.1.2.2 The purge shall be considered complete when all of the following conditions are satisfied:

- (1) The flammable vapor or gas concentration in the combustion chamber is measured to be 25 percent or less of the LFL of the fuel in air.
- (2)* The inlet air registers and outlet dampers are proved in the fully open position.

8.5.2* Trial-for-Ignition Period.

8.5.2.1 The trial-for-ignition period of the pilot burner shall not exceed 15 seconds.

8.5.2.2 The trial-for-ignition period of the main gas burner shall not exceed 15 seconds, unless both of the following conditions are satisfied:

- (1) A written request for an extension of trial for ignition is approved by the authority having jurisdiction.
- (2) It is determined that 25 percent of the LFL cannot be exceeded in the extended time.

8.5.2.3 The trial-for-ignition period of the main liquid fuel burner shall not exceed 15 seconds.

8.5.2.4 Electrical ignition energy for direct spark ignition systems shall be terminated after the main burner trial-for-ignition period.

N 8.5.2.5 Where direct spark ignition systems cause a false flame signal in required flame detectors and combustion safeguards, the electrical spark shall be terminated after the main burner trial-for-ignition period.

8.6 Combustion Air Safety Devices.

8.6.1 Where air from the exhaust or recirculating fans is required for combustion of the fuel, airflow shall be proved and interlocked prior to an ignition attempt.

8.6.2 Reduction of airflow to a level below the minimum required level shall result in closure of the safety shutoff valves.

8.6.3 Where a combustion air blower is used, the minimum combustion airflow or source pressure needed for burner operation shall be proved and interlocked prior to each attempt at ignition.

8.6.4 Motor starters on equipment required for combustion of the fuel shall be interlocked into the combustion safety circuitry.

8.6.5* Combustion air minimum pressure or flow shall be interlocked into combustion safety circuitry.

8.6.6* Where it is possible for combustion air pressure to exceed the maximum safe operating pressure, a high pressure switch interlocked into the combustion safety circuitry shall be used.

8.7 Safety Shutoff Valves (Fuel Gas or Liquid Fuel).

8.7.1 General.

8.7.1.1 Safety shutoff valves shall be a key safety control to protect against explosions and fires.

8.7.1.2* Each safety shutoff valve required in 8.7.2.1 and 8.7.3.1 shall automatically shut off the fuel to the burner system after interruption of the holding medium (such as electric current or fluid pressure) by any one of the interlocking safety devices, combustion safeguards, or operating controls.

8.7.1.3 The use of listed safety shutoff valves designed as both a safety shutoff valve and a modulating valve and tested for concurrent use shall be permitted.

8.7.1.4 Safety shutoff valves shall not be open-close cycled at a rate that exceeds that specified by its manufacturer.

8.7.1.5 Valve components shall be of a material selected for compatibility with the fuel handled and for ambient conditions.

8.7.1.6 Safety shutoff valves in systems containing particulate matter or highly corrosive fuel gas shall be operated at time intervals in accordance with the manufacturer's instructions in order to maintain the safety shutoff valves in operating condition.

8.7.1.7 Valves shall not be subjected to supply pressures in excess of the manufacturer's ratings.

8.7.1.8* Valves shall be selected to withstand the maximum anticipated backpressure of the system.

8.7.1.9* If the inlet pressure to a fuel pressure regulator exceeds the pressure rating of any downstream component, overpressure protection shall be provided.

8.7.1.10 Local visual position indication shall be provided at each safety shutoff valve to burners or pilots in excess of 150,000 Btu/hr (44 kW).

(A) The local visual position indication shall directly indicate the physical position, closed and open, of the valve.

(B) Where lights are used for position indication, the absence of light shall not be used to indicate open or closed position.

(C) Indirect indication of valve position, such as by monitoring operator current, voltage, or pressure, shall not be permitted.

N 8.7.1.11 Safety shutoff valves shall meet one of the following requirements:

- (1) The safety shutoff valves shall close in 1 second or less upon being de-energized.
- (2) Where safety shutoff valve closure time exceeds 1 second, the combined time for safety shutoff valve closure and flame failure response shall not exceed 5 seconds.

8.7.2* Fuel Gas Safety Shutoff Valves.

8.7.2.1 Each main and pilot fuel gas burner system shall be separately equipped with two safety shutoff valves piped in series.

8.7.2.2* Where the main or pilot fuel gas burner system capacity exceeds 400,000 Btu/hr (117 kW), at least one of the safety shutoff valves between each burner and the fuel supply shall be proved closed and interlocked with the pre-ignition purge interval.

(A) A proved closed condition shall be accomplished by either of the following means:

- (1) A proof-of-closure switch incorporated in a listed safety shutoff valve assembly in accordance with the terms of the listing
- (2) A valve-proving system

Δ (B) Auxiliary and closed-position indicator switches shall not satisfy the proved-closed requirements of 8.7.2.2(A).

8.7.2.3 Means for testing all fuel gas safety shutoff valves for valve seat leakage shall be installed.

8.7.3 Liquid Fuel Safety Shutoff Valves.

8.7.3.1 At least one liquid fuel safety shutoff valve shall be provided.

8.7.3.2 Two safety shutoff valves shall be used where any one of the following conditions exists:

- (1) The pressure is greater than 125 psi (862 kPa).
- (2) The liquid fuel pump operates without the main liquid fuel burner firing, regardless of the pressure.
- (3) The liquid fuel pump operates during the fuel gas burner operation of combination gas and liquid fuel burners.

8.7.3.3* Where the burner system capacity exceeds 400,000 Btu/hr (117 kW), at least one of the safety shutoff valves between each burner and the fuel supply shall be proved closed and interlocked with the pre-ignition purge interval.

8.8 Fuel Pressure Switches (Gas or Liquid Fuel).

8.8.1 A low fuel pressure switch shall be provided and shall be interlocked into the combustion safety circuitry.

8.8.2 A high fuel pressure switch shall be provided and shall meet the following criteria:

- (1) Be interlocked into the combustion safety circuitry
- (2) Be located downstream of the final pressure-reducing regulator

8.8.3 Pressure switch settings shall be made in accordance with the operating limits of the burner system.

8.9 Flame Supervision.

8.9.1 Each burner shall have a supervised flame monitored by a flame detector and combustion safeguard that are interlocked into the burner management system.

N 8.9.2* The flame failure response time shall be 4 seconds or less.

8.9.3 Each pilot and main burner flame shall be equipped with flame supervision in one of the following ways:

- (1) Main and pilot flames supervised with independent flame sensors
- (2) Main and interrupted pilot flames supervised with a single flame sensor
- (3) Self-piloted burner supervised with a single flame sensor

N 8.9.4* Where flame-sensing detectors can fail in the flame-proven mode, self-checking features shall be provided unless the burner is operated for periods less than 24 hours, or less if required by manufacturers' instructions, and the burner management system includes a safe-start component checking feature.

N 8.9.5 A safe-start check shall be performed during each burner startup sequence.

N 8.9.6* Flame detector devices using ionization sensors (e.g., flame rods) shall only make use of the rectification property of the flame.

8.10 Liquid Fuel Atomization (Other than Mechanical Atomization).

8.10.1 The pressure of the atomizing medium shall be proved and interlocked into the combustion safety circuitry.

8.10.2 The low pressure switch used to supervise the atomizing medium shall be located downstream from all valves and other obstructions that can shut off flow or cause pressure drop of atomization medium.

8.10.2.1 The low pressure switch used to supervise the atomizing medium shall be permitted to be located upstream of atomizing media balancing orifices and balancing valves provided balancing devices are equipped with a locking device to prevent an unintentional change in the setting.

8.10.3 Where the atomizing medium requires modulation, an additional low atomizing medium pressure switch, located upstream of the modulating valve, shall be provided to meet the requirements in 8.10.1.

8.11* Liquid Fuel Temperature Limit Devices. Where equipment is used to regulate liquid fuel temperature, liquid fuel temperature limit devices shall be provided and interlocked into the combustion safety circuitry if it is possible for the liquid fuel temperature to rise above or fall below the temperature range required by the burners.

8.12 Multiple Fuel Systems.

8.12.1* Safety equipment in accordance with the provisions of this standard shall be provided for each fuel used.

8.12.2 Where dual-fuel burners, excluding combination burners, are used, positive provision shall be made to prevent the simultaneous introduction of both fuels.

8.13 Air-Fuel Gas Mixing Machines.

8.13.1 Safety shutoff valves shall be installed in the fuel gas supply connection of any mixing machine.

8.13.2 The safety shutoff valves shall be arranged to shut off the fuel gas supply automatically when the mixing machine is not in operation or in the event of an air or fuel gas supply failure.

8.14 Ignition of Main Burners — Fuel Gas or Liquid Fuel. Where a reduced firing rate is required for ignition of the burner, an interlock shall be provided to prove the control valve has moved to the design position prior to each attempt at ignition.

8.15 Stack Excess Temperature Limit Interlock.

8.15.1 A stack excess temperature limit interlock shall be provided and interlocked into the combustion safety circuitry.

8.15.2 The stack excess temperature limit interlock shall operate before the maximum stack temperature, as specified by the fluid heater manufacturer, is exceeded.

8.15.3 Operation of the stack excess temperature limit interlock shall cut off the heating system.

• 8.15.4 Operation of the stack excess temperature limit interlock shall require manual reset before restart of the fluid heater or affected zone.

8.15.5* The temperature-sensing element of the stack excess temperature limit interlock shall be selected for the temperature and atmosphere to which they are exposed.

8.15.6 The temperature-sensing element of the stack excess temperature limit interlock shall be located where recommended by the fluid heater manufacturer.

8.15.7 The operating temperature controller and its temperature-sensing element shall not be used as the excess temperature limit interlock.

N 8.15.8 Open-circuit failure of the temperature-sensing components of the stack excess temperature limit interlock shall cause the same response as does an excess temperature condition.

8.16 Fluid Excess Temperature Limit Interlock.

8.16.1 All heaters shall have the fluid excess temperature measurements on the heater outlet.

8.16.1.1 The temperature-sensing device shall be compatible with the fluid being measured and the expected operating temperature and pressure.

8.16.1.2 Temperature-sensing devices shall be located so that they are exposed to the stream and are not in a stagnant location or where they might be insulated by deposits.

8.16.2 The fluid excess temperature set point shall be set no higher than the maximum temperature specified by the fluid manufacturer, the heater design, or downstream process limits, whichever is lowest.

8.16.3 The fluid excess temperature limit interlock shall be provided and interlocked into the combustion safety circuitry.

8.16.4 Operation of the fluid excess temperature limit interlock shall require manual reset before restart of the fluid heater or affected zone.

8.16.5 Open-circuit failure of the temperature-sensing components of the fluid excess temperature limit interlock shall cause the same response as does an excess temperature condition.

8.16.6 The fluid excess temperature limit interlock shall indicate its set point in temperature units that are consistent with the primary temperature-indicating controller.

8.16.7 The temperature-sensing element of the fluid excess temperature limit interlock shall be permitted to be monitored by other instrumentation, provided that the accuracy of the fluid excess temperature limit interlock temperature reading is not diminished.

8.16.8 The operating temperature controller and its temperature-sensing element shall not be used as the fluid excess temperature limit interlock.

8.17 Electrical Heating Systems.

8.17.1 Heating Equipment Controls.

8.17.1.1* Electric heating equipment shall be equipped with a main disconnect device or with multiple devices to provide backup circuit protection to equipment and to persons servicing the equipment.

8.17.1.2 The disconnecting device(s) required by 8.17.1.1 shall be capable of interrupting maximum available fault current as well as rated load current.

8.17.1.3 Shutdown of the heating power source shall not affect the operation of equipment such as pumps, ventilation or recirculation fans, cooling components, and other auxiliary equipment, unless specifically designed to do so.

8.17.1.4 Resistance heaters larger than 48 amperes shall not be required to be subdivided into circuits of 48 amperes or less.

8.17.1.5* The capacity of all electrical devices used to control energy for the heating load shall be selected on the basis of continuous duty load ratings where fully equipped for the location and type of service proposed.

8.17.1.6 All controls using thermal protection or trip mechanisms shall be located or protected to preclude faulty operation due to ambient temperatures.

8.17.2* Heating Element Excess Temperature Limit Interlock.

8.17.2.1 An excess temperature limit interlock shall be provided and interlocked into the heating element circuitry, unless it can be demonstrated that the maximum temperature limit specified by the element manufacturer cannot be exceeded.

8.17.2.2 Operation of the excess limit interlock shall shut off the heating system before the heating element's maximum temperature, as specified by the element manufacturer, is exceeded.

8.17.2.3 Operation of the excess temperature limit interlock shall require manual reset before restart of the fluid heater or affected zone.

8.17.2.4 Open-circuit failure of the temperature-sensing components of the excess temperature limit interlock shall cause the same response as an excess temperature condition.

8.17.2.5* The temperature-sensing components of the excess temperature limit interlock shall be rated for the temperature and environment to which they are exposed.

8.17.2.6* The temperature-sensing element of the heating element excess temperature limit interlock shall be located where recommended by the heating element manufacturer.

N 8.18 Additional Interlocks.

N 8.18.1* The expansion tank, when used, shall be equipped with a low-level interlock.

N 8.18.1.1 The low-level interlock shall be satisfied before the pumps and the heater can be started and shall be interlocked into the combustion safety circuitry.

N 8.18.1.2 The low-level interlock shall shut down the pump and heater if a low level occurs.

N 8.18.1.3 Indication of low-level interlock activation shall be provided.

N 8.18.2 Low Fluid Flow.

N 8.18.2.1* One or more interlocks shall be provided to prove minimum fluid flow through the heater at all operating conditions and interlocked in the combustion safety circuitry.

N 8.18.2.2 The minimum flow-proving device shall be interlocked into the combustion safety circuitry.

N 8.18.2.3 The minimum flow-proving device shall be interlocked to shut down the heater.

N 8.18.3 Blanket Gas Low-Pressure.

N 8.18.3.1 If pressurization of the expansion tank is required due to the vapor pressure of the fluid, the expansion tank shall have a blanket gas low-pressure interlock set at a value above the vapor pressure of the fluid at the operating temperature.

N 8.18.3.1.1 The blanket gas low-pressure proving device shall be interlocked into the combustion safety circuitry.

N 8.18.3.1.2 The blanket gas low-pressure proving device shall be interlocked to shut down the pump.

N 8.18.3.2 If pressurization of the expansion tank is required due to the net positive suction head (NPSH) of the pump or location of the tank, the expansion tank shall have a blanket gas low-pressure interlock set to satisfy the NPSH required by the pump.

N 8.18.3.2.1 The blanket gas low-pressure proving device shall be interlocked into the combustion safety circuitry.

N 8.18.3.2.2 The blanket gas low-pressure proving device shall be interlocked to shut down the pump.

Chapter 9 Heaters

9.1 General.

9.1.1 Heaters shall be designed to ensure that the required minimum fluid flow is achieved through all tube passes.

9.1.1.1 Quiescent bath fire tube heaters are not covered by this standard.

N 9.1.2* The maximum allowable operating fluid temperature for the heater shall be based on the maximum allowable fluid bulk temperature, the maximum allowable fluid film temperature, and the maximum allowable material temperature.

9.1.3* The heater manufacturer shall determine the minimum flow rate, taking into consideration the maximum allowable bulk and film fluid temperature at the design flow rate and all heat input rates.

9.1.4 Flow.

N 9.1.4.1 Where backflow into the heater presents a hazard, a means to prevent backflow shall be provided.

N 9.1.4.2 Means of controlling the firing rate in accordance with the actual flow shall be provided so that maximum fluid film temperature and maximum material temperature are not exceeded.

N 9.1.4.3* When multiple parallel tube passes are used, balanced flow distribution between passes shall be ensured, such that each parallel pass maintains the minimum design flow rate, so that maximum fluid film temperatures and maximum allowable material temperatures are not exceeded.

9.1.5* A pressure relief device of appropriate pressure and flow shall be installed to protect the coil.

9.1.5.1 Discharge from relief devices shall be handled in accordance with 9.2.2.

9.1.5.2 Vent lines shall be designed to handle effluent flow in accordance with recognized and generally accepted good engineering practice.

Δ 9.1.6* The fluid system shall be designed to maintain the minimum fluid flow required to prevent high metal temperatures or high fluid film temperatures in the heat transfer coil, as determined in 9.1.3.

9.1.7 An expansion tank shall be provided for all closed-loop liquid circuits.

9.1.8 A means of sampling for fluid contamination or degradation shall be provided from the active loop.

9.2 Auxiliary Equipment.

9.2.1 Pumps.

Δ 9.2.1.1* Pumps that are specifically designed for hot fluid service shall be used.

9.2.1.2* The pumps shall be designed to be compatible with the fluid used as well as the fluid system design pressures and temperatures.

9.2.1.3 The system shall be designed such that there is sufficient net positive suction head available for the pump.

9.2.1.4 Positive displacement pumping systems shall incorporate means of pressure relief.

9.2.1.5* If water-cooled pumps are used, a means of verifying cooling water flow shall be provided.

9.2.1.6* Cold alignment of air- and water-cooled pumps shall be done in accordance with the pump manufacturer's recommendations prior to the pump being started.

9.2.1.7* Hot alignment of air- and water-cooled pumps shall be done after operating temperature has been reached, according to the pump manufacturer's instructions.

9.2.1.8 Cold and hot alignment shall be performed during commissioning and following pump maintenance.

Δ 9.2.1.9* Means to protect pumps from debris shall be provided.

9.2.2* Effluent Handling. All effluent from relief valves, vents, and drains shall be directed to an approved location.

9.2.2.1 Gaseous Effluent.

9.2.2.1.1 Gaseous effluents that are asphyxiants, toxic, or corrosive are outside the scope of this standard, and other standards shall be consulted for appropriate venting.

9.2.2.1.2 Flammable gases and oxidizers shall be vented to an approved location to prevent fire or explosion hazards.

Δ 9.2.2.1.3* When gaseous effluents are vented, the vent piping shall be designed in accordance with recognized and generally accepted good engineering practices.

9.2.2.1.4 The vent exit shall be designed in accordance with the following:

- (1) The pipe exit shall not be subject to physical damage or foreign matter that could block the exit.
- (2) The vent pipe shall be sized to minimize the pressure drop associated with length, fitting, and elbows at the maximum vent flow rate.
- (3) The vent piping shall not have any shutoff valves in the line.

9.2.2.1.5 If the gas is to be vented inside the building, the following additional guidance is offered:

- (1) If the gaseous effluents are flammable and lighter than air, the flammable gases should be vented to a location where the gas is diluted below its LFL before coming in contact with sources of ignition.
- (2) The gaseous effluents should not re-enter the work area without extreme dilution.

9.2.2.2 Liquid Phase Effluent.

9.2.2.2.1* Liquid phase effluent shall be directed to an approved location.

9.2.2.2.2 If an effluent containment vessel is used, it shall have a vent to atmosphere, with the vent outlet directed to an approved location.

9.2.2.2.2.1 If the containment vessel vent has the potential to vent gaseous effluents, the requirements of 9.2.2.1 shall apply.

9.2.2.2.2.2* The vent from the effluent containment vessel shall be designed in accordance with recognized and generally accepted good engineering practices.

9.2.2.2.3 The effluent containment vessel's inlets shall be located to prevent siphoning of the contents back into the system.

9.2.2.2.4 Means for indicating liquid level shall be provided on the effluent containment vessel.

9.2.2.2.5* The effluent containment vessel shall be designed for the intended service.

9.2.3 Valves.

9.2.3.1 Valves shall be compatible with the fluid being used and the system design temperatures and pressures.

9.2.3.2* Valves shall be selected for the intended application.

9.2.4 Expansion Tanks.

9.2.4.1* The expansion tank shall be connected to the fluid system piping upstream of the fluid pump.

9.2.4.2 The expansion tank shall be compatible with the fluid being used and the system design temperatures and pressures.

9.2.4.3* The expansion tank shall be sized to accommodate the fluid expansion of the entire system.

N 9.2.4.3.1 Secondary catch/storage tank(s) and refill pumps shall be permitted to be used to take up excess expansion volume.

9.2.4.4* A means shall be provided to separate and vent water, air, or other noncondensable components through the expansion tanks.

9.2.4.5 Means of draining the expansion tank to an approved location shall be provided.

9.2.4.6 An expansion tank vent or an expansion tank pressure relief device shall be provided, and the effluent shall be directed to an approved location, in accordance with 9.2.2.

9.2.4.7 Local or remote indication of expansion tank level shall be provided.

9.2.4.8* An expansion tank pressurized with an inert gas shall be used if any of the following conditions exist:

- (1) The tank is not the highest point in the system.
- (2) The fluid is operated at or above its atmospheric boiling point.

9.2.4.9* All expansion tanks that are pressurized over a gauge pressure of 15 psi (100 kPa) shall meet the requirements of ASME *Boiler and Pressure Vessel Code*, Section VIII, Division 1.

9.2.4.10* If pressurization of the expansion tank is required due to the vapor pressure of the fluid, the expansion tank shall have a blanket gas low-pressure interlock set at a value above the vapor pressure of the fluid at the operating temperature.

9.2.4.11* If pressurization of the expansion tank is required due to the net positive suction head (NPSH) of the pump, the expansion tank shall have a blanket gas low-pressure interlock set to satisfy the NPSH required by the pump.

N 9.2.4.12* A means shall be provided for separation of air, water, or other noncondensable components in the vapor.

Chapter 10 Fire Protection

10.1* **General.** The user shall determine the need for fire protection systems for fluid heaters or related equipment based on the hazards associated with the equipment.

10.1.1* Where determined to be necessary, portable, manual fixed, or automatic fixed fire protection systems shall be provided.

10.1.2 The fire protection system shall be provided with a remotely located manual actuator.

10.1.3 The fire protection system design shall be submitted for approval to the authority having jurisdiction.

10.1.4* Where a sustained fluid fire is possible, fireproofing of exposed heater-supporting members shall be provided.

Δ 10.1.5 If a fluid fire occurs in the combustion chamber of a heater, the following actions shall be taken:

- (1) Shut off the heating system fuel supply
- (2) Stop combustion air fans
- (3) Shut combustion air inlet dampers
- (4) Open outlet dampers to prevent overpressure of the firebox — implement fail-safe damper position
- (5) Activate the discharge of extinguishing agent or use portable extinguishers at openings to the fire box
- (6) Depressurize the fluid system to reduce the flow of fluid into the firebox
- (7) To extinguish the fluid-fed fire, drain the fluid to a location where it will not create a hazard
- (8) Isolate or repair the fluid leak before restarting the heating system

CAUTION: Where a pressurized fluid is at a temperature above its atmospheric boiling point, rapid draining can lead to flashing of the fluid and the generation of combustible vapors. An emergency cooler can be provided to cool the fluid to below its atmospheric boiling point.

10.1.6 The emergency response team (ERT) and the fire service shall be aware of the fluid identity and associated hazards, the location of the fluid and the fuel piping and shutoff valves, and proper fire-fighting methods.

10.2 Types of Fire Protection Systems.

Δ 10.2.1* Where automatic sprinklers are provided, they shall be installed in accordance with NFPA 13, unless otherwise permitted by 10.2.2.

CAUTION: The introduction of water into a hot chamber can create a steam explosion hazard.

10.2.2 Where sprinklers that protect only fluid heaters are installed and connection to a reliable fire protection water supply is not feasible, a domestic water supply connection shall be permitted to supply the sprinklers, subject to the approval of the authority having jurisdiction.

Δ 10.2.3 Where water spray systems are provided, they shall be installed in accordance with NFPA 15.

Δ 10.2.4 Where carbon dioxide protection systems are provided, they shall be installed in accordance with NFPA 12.

Δ 10.2.5 Where foam extinguishing systems are provided, they shall be installed in accordance with NFPA 11.

Δ 10.2.6 Where chemical protection systems are provided, they shall be installed in accordance with NFPA 17 or NFPA 17A.

Δ 10.2.7 Where water mist systems are provided, they shall be installed in accordance with NFPA 750.

10.2.8 Where steam extinguishing systems are provided, they shall be installed in accordance with accepted industry practice. (See Annex C.)

10.2.9 Where portable fire-extinguishing systems are provided, they shall be used in accordance with NFPA 10.

10.2.9.1 When portable fire protection is relied upon for extinguishing internal fluid-fed fires, an effective means of access for the extinguishing agent shall be provided.

Δ 10.3 Inspection, Testing, and Maintenance of Fire Protection Equipment. All fire protection equipment shall be inspected, tested, and maintained as specified in NFPA 10, NFPA 11, NFPA 12, NFPA 13, NFPA 15, NFPA 17, NFPA 17A, NFPA 25, and NFPA 750.

Annex A Explanatory Material

Annex A is not a part of the requirements of this NFPA document but is included for informational purposes only. This annex contains explanatory material, numbered to correspond with the applicable text paragraphs.

A.1.1 Explosions and fires in fuel-fired and electric fluid heaters constitute a loss potential in life, property, and production. This standard is a compilation of guidelines, rules, and methods applicable to the safe operation of this type of equipment.

Conditions and regulations that are not covered in this standard — such as toxic vapors, hazardous materials, noise levels, heat stress, and local, state, and federal regulations (EPA and OSHA) — should be considered in the design and operation of fluid heaters.

Most causes of failures can be traced to human error. The most significant failures include inadequate training of operators, lack of proper maintenance, and improper application of equipment. Users and designers must utilize engineering skill to bring together that proper combination of controls and training necessary for the safe operation of equipment. This standard classifies fluid heaters as Class F fluid heaters.

Class F fluid heaters operate at approximately atmospheric pressure and present a potential explosion or fire hazard that could be occasioned by the overheating and/or release of flammable or combustible fluids from the tubing that carries them through the heating chamber. Class F fluid heaters operate with a relatively constant flow of fluid through the tubes, and the flowing fluid is intended to remove sufficient heat to maintain tubing walls cool enough to avoid irreversible damage that could lead to rupture. Safeguards that reduce the risk of fire or explosion associated with the use of fuel gases or fuel oils are also a major consideration for the design and operation of Class F fluid heaters.

Δ A.1.1.3(7) For guidance on solid fuel systems, see NFPA 85.

A.1.3 Because this standard is based on the current state of the art, application to existing installations is not recommended. Nevertheless, users are encouraged to adopt those features that are considered applicable and reasonable for existing installations.

A.1.5 No standard can guarantee the elimination of fires and explosions in fluid heaters. Technology in this area is under constant development, which is reflected in fuels, fluids, geometries, and materials. Therefore, the designer is cautioned that this standard is not a design handbook and thus does not eliminate the need for an engineer or competent engineering judgment. It is the intention of this standard that a designer capable of applying more complete and rigorous analysis to special or unusual problems have latitude in the development of fluid heater designs. In such cases, the designer should be responsible for demonstrating and documenting the safety and validity of the design.

A.3.2.1 Approved. The National Fire Protection Association does not approve, inspect, or certify any installations, procedures, equipment, or materials; nor does it approve or evaluate testing laboratories. In determining the acceptability of installations, procedures, equipment, or materials, the authority having jurisdiction may base acceptance on compliance with NFPA or other appropriate standards. In the absence of such standards, said authority may require evidence of proper installation, procedure, or use. The authority having jurisdiction may also refer to the listings or labeling practices of an organization that is concerned with product evaluations and is thus in a position to determine compliance with appropriate standards for the current production of listed items.

A.3.2.2 Authority Having Jurisdiction (AHJ). The phrase “authority having jurisdiction,” or its acronym AHJ, is used in NFPA documents in a broad manner, since jurisdictions and approval agencies vary, as do their responsibilities. Where public safety is primary, the authority having jurisdiction may be a federal, state, local, or other regional department or individual such as a fire chief; fire marshal; chief of a fire prevention bureau, labor department, or health department; building official; electrical inspector; or others having statutory authority. For insurance purposes, an insurance inspection department, rating bureau, or other insurance company representative may be the authority having jurisdiction. In many circumstances, the property owner or his or her designated agent assumes the role of the authority having jurisdiction; at government installations, the commanding officer or departmental official may be the authority having jurisdiction.

A.3.2.4 Listed. The means for identifying listed equipment may vary for each organization concerned with product evaluation; some organizations do not recognize equipment as listed unless it is also labeled. The authority having jurisdiction should utilize the system employed by the listing organization to identify a listed product.

A.3.3.5 Burner Management System. The burner management system includes the combustion safety circuitry, safety interlocks, combustion safeguards, and safety devices.

N A.3.3.14 Flame Rod. The resulting electrical current, which passes through the flame, is rectified, and this rectified current is amplified by the flame detector. [86, 2015]

A.3.3.21 Hardwired. When the term *hardwired* is applied to the logic system itself, it refers to the method of using individual devices and interconnecting wiring to program and perform the logic functions without the use of software-based logic solvers.

N A.3.3.34 Safe-Start Check. A flame-detected condition could exist due to the presence of actual or simulated flame or due to component failure within the combustion safeguard or flame detector(s). [86, 2015]

A.3.3.40.5 Proof-of-Closure Switch. A common method of effecting proof of closure is by valve seal overtravel. [86, 2015]

A.3.3.43 Valve Proving System. EN 1643, *Valve Proving Systems for Automatic Shut-Off Valves for Gas Burners and Gas Appliances*, requires leakage to be less than 1.76 ft³/hr (50 L/hr). The definition of *proof of closure* in ANSI Z21.21/CSA 6.5, *Automatic Valves for Gas Appliances*, and FM 7400, *Approval Standard for Liquid and Gas Safety Shutoff Valves*, requires leakage less than 1 ft³/hr (28.32 L/hr). [86, 2015]

A.4.1.1.2 Ladder-type schematic diagrams are recommended.

- △ **A.4.1.3.1** The proximity of electrical equipment and flammable gas or liquid in an electrical enclosure or panel is a known risk and would be considered a classified area. Article 500 of *NFPA 70* should be consulted.

If the device fails, conduit-connecting devices handling flammable material might carry this material to an electrical enclosure, creating a classified area in that enclosure. Sealing of such conduits should be considered.

- △ **A.4.1.3.2** Open flames and hot surfaces associated with the operation of heaters provide inherent thermal ignition sources. When the heater is located in an unclassified area and in accordance with requirements in 5.1.1.1, electrical classification of the immediate vicinity of the heater is not appropriate. It might be prudent to avoid installing electrical equipment that could be a primary ignition source for potential leak sources under normal operating conditions. However, if this electrical equipment needs to be installed in this area it should be in accordance with Section 5.4 of *NFPA 497*. Additional related recommendations can be found in Section 6.2.4 of *API RP 500, Recommended Practice for Classification of Locations for Electrical Installations at Petroleum Facilities Classified as Class I, Division 1 and Division 2*.

Note: The requirement to not classify the immediate vicinity of the heater does not imply the safe placement of the heater near processes or equipment with potential leak sources, because heaters are themselves sources of ignition. Also, it is not the intent of this document to require the creation of an unclassified location with the installation of the heater in an area that would otherwise be classified. Whether or not it is safe to install a heater at the location is outside the scope of this document.

- △ **A.4.3.1** The heater manufacturer should verify fluids use for compatibility with the heater design. For compatibility of the fluids being mixed, the fluid(s) manufacturers should be consulted.

A.4.3.2 If the heater supplier is no longer available or in existence, a study should be performed. The following items are examples of compatibility issues to be studied: system materials, flow rates, bulk and film temperatures, pressures, venting, inerting, and fire protection, where they affect heater design.

A.5.1.1.1 Hazards to be considered include spillage of molten metal, salt, or other molten material, hydraulic oil ignition, overheating and/or release of material being heated in the fluid heater, and escape of fuel or flue gases.

- △ **A.5.1.1.4** For additional information, refer to *NFPA 31*, *NFPA 54*, and *NFPA 91*.

A.5.1.1.6 Solidification of the fluid in the fluid heater and associated piping should be avoided. Consider providing insulation and heat tracing on piping and equipment where it is impractical to reliably guarantee that temperatures will not go below the minimum pumpable viscosity for an extended period of time.

- △ **A.5.1.3.5** The hazard is particularly severe where vapors from nearby processes could flow by means of gravity to ignition sources at or near floor level. See *NFPA 30*, *NFPA 33*, and *NFPA 34*.

A.5.1.4.3 If the fluid heater is located in contact with a wood floor or other combustible floor and the operating temperature is above 160°F (71°C), one or both of the following steps should be adequate to prevent surface temperatures of combustible floor members from exceeding 160°F (71°C):

- (1) Combustible floor members should be removed and replaced with a monolithic concrete slab that extends a minimum of 3 ft (1 m) beyond the outer extremities of the fluid heater.
- (2) Air channels, either naturally or mechanically ventilated, should be provided between the floor and the equipment (perpendicular to the axis of the equipment), or noncombustible insulation should be provided.

A.5.2 Steam or hot water boilers should not be converted to fluid heating operation except under the guidance of the equipment manufacturer.

A.5.2.3 Fluid heater design should include factors of safety so as to avoid failures when the heater is operating at maximum design loading.

A.5.2.4 For fluid heaters that utilize induced draft fans, the design should account for operation at subambient pressure and should be designed to prevent implosion.

- △ **A.5.2.6.1** Ladders, walkways, and access facilities, where provided, should be designed in accordance with 29 CFR 1910.24 through 1910.29 and with ANSI A14.3, *Ladders — Fixed — Safety Requirements*.

- **A.5.3** For additional information regarding explosion protection of equipment and buildings, see *NFPA 68* and *NFPA 69*.

Where explosion relief is provided, its location is a critical concern and should be close to the ignition source. Personnel considerations and proximity to other obstructions can affect the location selected for these vents. The intent of providing explosion relief in furnaces is to limit damage to the furnace and to reduce the risk of personnel injury due to explosions. To achieve those goals, relief panels and doors should be sized so that their inertia does not preclude their ability to relieve internal explosion pressures.

Damage-limiting construction could include exterior panels that are designed to become detached under the influence of internal pressure from a deflagration. In such cases, tethering the panels is vitally important to ensure dislodged panels don't cause injury or damage. *NFPA 68* provides guidance for tethering doors and walls that can become dislodged in a deflagration event.

- △ **A.5.4** For additional information, refer to *NFPA 31*, *NFPA 54*, and *NFPA 91*.

- △ **A.5.4.1** Some fluid heaters rely on the air in a building or room for combustion air. If the fluid heater fans compete with other building fans (such as building exhausts), safety and performance of the fluid heater could be compromised.

When the air requirements of a building or room are being determined or reviewed for combustion air, provisions should be made for air being removed from the room for other purposes, such as for removal of heat, flue products, emergency generators, and other combustion equipment. Combustion air should be in excess of air that is to be removed from the room for other purposes. Seasonal factors could also be relevant in

cold climates, where building openings are closed during cold weather.

In the case of fluid heaters, especially those using natural draft, combustion air consistent with the requirements identified in Section 9.3 of NFPA 54 should be provided.

A.5.4.3.3 Ducts that pass through fire walls should be avoided.

A.5.4.3.6 High temperature or corrosive gases conveyed in the duct could compromise structural members if contact occurs.

A.5.4.3.7 All interior laps in the duct joints should be made in the direction of the flow.

N A.5.4.3.12 This requirement is not intended to apply to flue gas recirculation systems as permitted in 6.2.3.2.1.

N A.5.5.1.3.1 The excessive use of spools might increase the risk of leakage.

A.5.5.1.7 Care should be taken that none of the fluid heater system components is overpressurized. Hydrostatically testing with water can contaminate the system due to residual water in the system.

Δ A.6.2 For additional information, refer to NFPA 54.

A.6.2.3.3 See A.5.4.1 for information on combustion air supply considerations.

A.6.2.4.1 The valve used for remote shutoff service should be identified. If the main incoming service valve is used for this purpose, it must be understood that the valve might be owned by the local utility, which could affect access to and service of the valve. Remotely located valves used for shutting down fuel distribution systems that serve a number of users or pieces of equipment should be regularly exercised (by opening and closing several times) to verify their ability to operate when needed. Lubricated plug valves should be maintained annually, including the installation of sealant and leak testing.

Δ A.6.2.5.2 NFPA 54 provides sizing methods for gas piping systems.

A.6.2.6.3 When the fuel train is opened for service, the risk of dirt entry exists. It is not required that existing piping be opened for the sole purpose of the addition of a filter or strainer. It is good practice to have the sediment trap located upstream of the filter. The intent of the sediment trap is to remove larger particulates, while the intent of the filter is to remove smaller particulates. The reverse arrangement will result in additional maintenance and might result in removal of the filter element from service.

A.6.2.7.3 Paragraph 6.2.7.3 covers venting of flammable and oxidizing gases only. Gases that are asphyxiants, toxic, or corrosive are outside the scope of this standard, and other standards should be consulted for appropriate venting. Flammable gases and oxidizers should be vented to an approved location to prevent fire or explosion hazards. When gases are vented, the vent pipe should be located in accordance with the following:

- (1) Gas should not impinge on equipment, support, building, windows, or materials because the gas could ignite and create a fire hazard.
- (2) Gas should not impinge on personnel at work in the area or in the vicinity of the exit of the vent pipe because the gas could ignite and create a fire hazard.

- (3) Gas should not be vented in the vicinity of air intakes, compressor inlets, or other devices that utilize ambient air.

The vent exit should be designed in accordance with the following:

- (1) The pipe exit should not be subject to physical damage or foreign matter that could block the exit.
- (2) The vent pipe should be sized to minimize the pressure drop associated with length, fitting, and elbows at the maximum vent flow rate.
- (3) The vent piping should not have any shutoff valves in the line.

If the gas is to be vented inside the building, the following additional guidance is offered:

- (1) If the gas is flammable and lighter than air, the flammable gases should be vented to a location where the gas is diluted below its LFL before coming in contact with sources of ignition.
- (2) The gas should not re-enter the work area without extreme dilution.

Δ A.6.2.7.4 See NFPA 54 for exceptions to vent requirements.

Vent limiters are used to limit the escape of gas into the ambient atmosphere if a vented device (e.g., regulator, zero governor, pressure switch) requiring access to the atmosphere for operation has an internal component failure. Where a vent limiter is used, there might not be a need to vent the device to an approved location. Following are some general guidelines and principles on the use of vented devices incorporating vent limiters:

- (1) The listing requirements for vent limiters are covered in ANSI Z21.18/CSA 6.3, *Standard for Gas Appliance Pressure Regulators*, for regulators and in UL 353, *Standard for Limit Controls*, for pressure switches and limit controls. ANSI Z21.18/CSA 6.3 requires a maximum allowable leakage rate of 2.5 ft³/hr (0.071 m³/hr) for natural gas and 1.0 ft³/hr (0.028 m³/hr) for LP-Gas at the device's maximum rated pressure. UL 353 allows 1.0 ft³/hr (0.028 m³/hr) for natural gas and 1.53 ft³/hr (0.043 m³/hr) for LP-Gas at the device's maximum rated pressure. Since a vent limiter can be rated less than the device itself and can be a field-installable device, a combination listed device and vent limiter should be used.
- (2) Where a vent limiter is used, there should be adequate airflow through the room or enclosure in which the equipment is installed. In reality, conditions can be less ideal, and care should be exercised for the following reasons:
 - (a) The relative density of the gas influences its ability to disperse in air. The higher the relative density, the more difficult it is for the gas to disperse (e.g., propane will disperse more slowly than natural gas).
 - (b) Airflow patterns through a room or enclosure, especially in the vicinity of the gas leak, affect the ability of the air to dilute that gas. The greater the local air movement, the greater the ease with which the gas is able to disperse.
 - (c) The vent limiter might not prevent the formation of a localized flammable air-gas concentration for the preceding reasons.

A.6.2.7.5 See A.6.2.7.4.

A.6.2.7.9 NFPA 87 does not address vents between safety shut-off valves, but they are sometimes installed.

A.6.2.8.3 Token relief valves only provide minimum pressure relief in cases where ambient temperatures increase the pressure inside the gas piping, which can occur during shutdown periods, or relieves a small increase of pressure due to high lockup pressures that occur during a shutdown.

A.6.2.9 In the design, fabrication, and utilization of mixture piping, it should be recognized that the air–fuel gas mixture might be in the flammable range.

A.6.2.9.2(A) Two basic methods generally are used. One method uses a separate fire check at each burner, the other a fire check at each group of burners. The second method generally is more practical if a system consists of many closely spaced burners.

A.6.2.9.2(E) Acceptable safety blowouts are available from some manufacturers of air–fuel mixing machines. They incorporate the following components and design features:

- (1) Flame arrester
- (2) Blowout disk
- (3) Provision for automatically shutting off the supply of air–gas mixture to the burners in the event of a flashback passing through an automatic fire check

A.6.2.11.1 A burner is suitably ignited when combustion of the air–fuel mixture is established and stable at the discharge port(s) of the nozzle(s) or in the contiguous combustion tunnel.

A.6.3.1 In the design and use of oil-fired units, the following should be considered:

- (1) Unlike fuel gases, data on many important physical and chemical characteristics are not available for fuel oil, which, being a complex mixture of hydrocarbons, is relatively unpredictable.
- (2) Fuel oil has to be vaporized prior to combustion. Heat generated by the combustion commonly is utilized for this purpose, and oil remains in the vapor phase as long as sufficient temperature is present. Under these conditions, oil vapor can be treated as fuel gas.
- (3) Unlike fuel gas, oil vapor condenses into liquid when the temperature falls too low and reevaporizes whenever the temperature rises to an indeterminate point. Therefore, oil in a cold furnace can lead to a hazardous condition, because, unlike fuel gas, it cannot be purged. Oil can vaporize (to become a gas) when, or because, the furnace-operating temperature is reached.
- (4) Unlike water, for example, there is no known established relationship between temperature and vapor pressure for fuel oil. For purposes of comparison, a gallon of fuel oil is equivalent to 140 ft³ (4.0 m³) of natural gas; therefore, 1 oz (0.03 kg) equals approximately 1 ft³ (0.03 m³).

Additional considerations that are beyond the scope of this standard should be given to other combustible liquids not specified in 6.3.1.

△ **A.6.3.3** For additional information, refer to NFPA 31.

N **A.6.3.3.4** See A.5.4.1 for information on combustion air supply considerations.

A.6.3.4.4 A long circulating loop, consisting of a supply leg, a backpressure regulating valve, and a return line back to the

storage tank, is a means of reducing air entrainment. Manual vent valves might be needed to bleed air from the high points of the oil supply piping.

A.6.3.4.6 The weight of fuel oil is always a consideration in vertical runs. When fuel oil is going up, pressure is lost. A gauge pressure of 100 psi (689 kPa) with a 100 ft (30.5 m) lift nets only a gauge pressure of 63 psi (434 kPa). When fuel oil is going down, pressure increases. A gauge pressure of 100 psi (689 kPa) with a 100 ft (30.5 m) drop nets a gauge pressure of 137 psi (945 kPa). This also occurs with fuel gas, but it usually is of no importance. However, it should never be overlooked with oils.

• **A.6.3.5.4** Customarily, a filter or strainer is installed in the supply piping to protect the pump. However, this filter or strainer mesh usually is not sufficiently fine for burner and valve protection. Additional strainers per equipment manufacturer recommendations can also be used.

A.6.3.5.6 Under some conditions, pressure sensing on fuel oil lines downstream from feed pumps can lead to gauge failure when rapid pulsation exists. A failure of the gauge can result in fuel oil leakage. The gauge should be removed from service after initial burner start-up or after periodic burner checks. An alternative approach would be to protect the gauge during service with a pressure snubber.

A.6.3.6.1 The atomizing medium might be steam, compressed air, low pressure air, air–gas mixture, fuel gas, or other gases. Atomization also might be mechanical (mechanical atomizing tip or rotary cup).

A.6.3.8.1 A burner is suitably ignited when combustion of the air–fuel mixture is established and stable at the discharge port(s) of the nozzle(s) or in the contiguous combustion tunnel.

A.7.2.1 Commissioning might be required again following modification, reactivation, or relocation of the furnace.

A.7.2.5 It is recommended that all system settings and parameters be documented for future maintenance and operational needs.

A.7.2.6 A test involving discharge of an extinguishing agent in a sufficient amount to verify that the system is properly installed and functional is recommended. The discharge test can be simulated by an appropriate means. The discharge test can be omitted if damage to the equipment or surroundings would result.

A.7.2.8 Using inert gas that is heated can help vaporize water trapped within the system.

A.7.2.9 Addition of fluid should be at a low point of the piping. A small positive displacement pump is typically used to fill the fluid heater system.

A.7.2.10 Raising the temperature slowly helps prevent spalling during refractory dryout and curing, minimizes thermal stresses on the equipment, and prevents rapid vaporization of residual water in the piping.

△ **A.7.2.12** The evacuation/purging, charging, and confirmation of the fuel or combustible gas supply in the piping upstream of the equipment isolation valve is governed by other codes, standards, and recommended practices. One example is

Section 8.3 of NFPA 54, which establishes requirements based on the fuel gas pressure, pipe size, and pipe length.

Careful consideration should be given to the potential hazards that can be created in the surrounding area for any fuel or flammable gas discharge.

In NFPA 54, the term *appliance shutoff valve* is analogous to the term *equipment isolation valve* in NFPA 87.

NFPA 54 does not address the use of nitrogen for an inert purge and its property as an asphyxiant, nor does it address how to monitor that nitrogen has displaced sufficient oxygen in the piping system prior to the introduction of flammable gas. In this regard, 7.3.5 of NFPA 56 is helpful in identifying the requirements for an oxygen detector, and 7.2.2.3 is helpful for determining an adequate inert (oxygen depleted) condition.

Paragraphs 7.1.2.1 and 7.1.2.2 of NFPA 56 might also be helpful in engaging the involvement of the fuel gas supplier with the evacuation and charging procedure and implementation.

A.7.3.1 The training program might include one or more of the following components:

- (1) Review of operating and maintenance information
- (2) Periodic formal instruction
- (3) Use of simulators
- (4) Field training
- (5) Other procedures
- (6) Comprehension testing

The following training topics should be considered for inclusion when the training program is being developed:

- (1) Process and equipment inspection testing
- (2) Combustion of fuel-air mixtures
- (3) Explosion hazards, including improper purge timing and purge flow, and safety ventilation
- (4) Sources of ignition, including autoignition (e.g., by incandescent surfaces)
- (5) Functions of controls, safety devices, and maintenance of proper set points
- (6) Handling and processing of hazardous materials
- (7) Management of process fluid level, flow, and temperature
- (8) Confined space entry procedures
- (9) Operating instructions (see 7.4.2)
- (10) Lockout/tagout procedures
- (11) Hazardous conditions resulting from interaction with surrounding processes
- (12) Fire protection systems
- (13) Molten material

A.7.3.4 Training should include recognition of upset conditions that could lead to dangerous conditions. Operator training should cover the relationships between firing rate, fluid flow rate, and fluid temperature increase, so that if a high fluid temperature is detected, the cause can be determined quickly.

A.7.4.3 See Annex B.

A.7.4.7 If a new operating envelope is desired, the equipment manufacturer and the fluid supplier should be contacted to establish new operating limits.

A.7.5.3 The fluid manufacturer should be consulted for help in determining where in the system to take samples. The samples should be sent to the manufacturer. Facilities with

laboratories might be able to perform independent tests, provided a baseline sample is available for comparison purposes.

A.7.5.5 Tests involving the discharge of the extinguishing agent should be performed at a frequency recommended by the fire protection system manufacturer.

A.7.5.8 See, for example, NBBI NB-23, *National Board Inspection Code*.

A.7.5.11 In cases where minimal operating states (e.g., minimum fluid flow) must be established to prevent a hazardous condition, it is recommended that the precision of the set point be confirmed. Where precision is inadequate, the component should be either recalibrated or replaced. Frequency of this testing and calibration should be established based on the component's mean time between failure (MTBF) data and the component manufacturer's recommendations.

Δ A.7.5.14 An example of a leak test procedure for safety shutoff valves on a gas-fired fluid heater.

Leak Test Procedure. With the burner(s) shut off, the main shutoff valve open, and the manual shutoff valve closed, proceed as follows:

- (1) Place the tube in test connection 1 and immerse it just below the surface of a container of water.
- (2) Open the test connection valve. If bubbles appear, the valve is leaking; reference the manufacturer's instructions for corrective action. The auxiliary power supply to safety shutoff valve No. 1 should be energized, and the valve should be opened.
- (3) Place the tube in test connection 2 and immerse it just below the surface of a container of water.
- (4) Open the test connection valve. If bubbles appear, the valve is leaking. Reference the manufacturer's instructions for corrective action.

The preceding procedure is predicated on the piping diagram shown in Figure A.7.5.14(a) and the wiring diagram shown in Figure A.7.5.14(b).

It is recognized that safety shutoff valves are not entirely leakfree. Valve seats can deteriorate over time and require periodic leak testing. Many variables are associated with the valve seat leak testing process, including gas piping and valve size, gas pressure and specific gravity, size of the burner chamber, length of downtime, and the many leakage rates published by recognized laboratories and other organizations.

Leakage rates are published for new valves and vary by manufacturer and the individual listings to which the manufacturer subscribes. It is not expected that valves in service can be held to published leakage rates, but rather that the leakage rates are comparable over a series of tests over time. Any significant deviation from the comparable leakage rates over time will indicate to the user that successive leakage tests can indicate unsafe conditions. These conditions should then be addressed by the user in a timely manner.

The location of the manual shutoff valve downstream of the safety shutoff valve affects the volume downstream of the safety shutoff valve and is an important factor in determining when to start counting bubbles during a safety shutoff valve seat leakage test. The greater the volume downstream of the safety shutoff valve, the longer it will take to fully charge the trapped volume in the pipe between the safety shutoff valve and the manual

shutoff valve. This trapped volume needs to be fully charged before starting the leak test.

Care should be exercised during the safety shutoff valve seat leakage test, because flammable gases will be released into the local environment at some indeterminate pressure. Particular attention should be paid to lubricated plug valves if used as manual shutoff valves, in order to ensure that they have been properly serviced prior to the valve seat leakage test.

Examples, although not all-inclusive, of acceptable leakage rate methodologies that the user can employ can be found in the publications in Annex D.

Figure A.7.5.14(a) through Figure A.7.5.14(c) show examples of gas piping and wiring diagrams for leak testing.

The following example also is predicated on the piping diagram shown in Figure A.7.5.14(a) and the wiring diagram shown in Figure A.7.5.14(b).

With the burner(s) shut off, the equipment isolation valve open, and the manual shutoff valve located downstream of the second safety shutoff valve closed, proceed as follows:

- (1) Connect the tube to leak test valve No. 1.
- (2) Bleed trapped gas by opening leak test valve No. 1.
- (3) Immerse the tube in water as shown in Figure A.7.5.14(c). If bubbles appear, the valve is leaking — reference the manufacturer's instructions for corrective action. Examples of acceptable leakage rates are given in Table A.7.5.14.
- (4) Apply auxiliary power to safety shutoff valve No. 1. Close leak test valve No. 1. Connect the tube to leak test valve No. 2 and immerse it in water as shown in Figure A.7.5.14(c).
- (5) Open leak test valve No. 2. If bubbles appear, the valve is leaking — reference the manufacturer's instructions for corrective action. Examples of acceptable leakage rates are given in Table A.7.5.14.

[86:A.7.4.9(1)–A.7.4.9(5)]

A.7.5.16 Lubricated plug valves require lubrication with the proper lubricant in order to shut off tightly. The application and type of gas used can require frequent lubrication to maintain the ability of the valve to shut off tightly when needed.

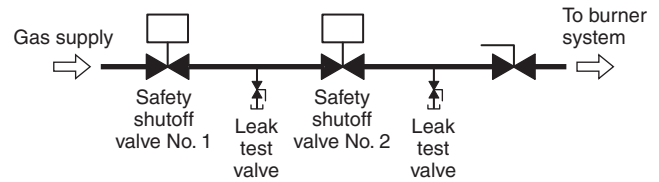


FIGURE A.7.5.14(a) Example of a Gas Piping Diagram for Leak Test. [86:Figure A.7.4.9(a)]

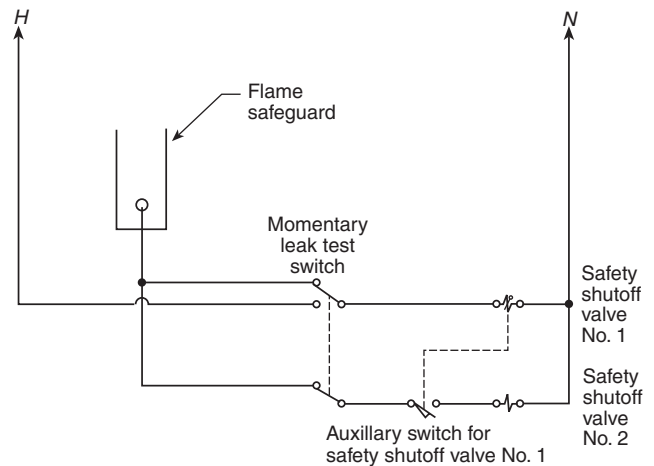


FIGURE A.7.5.14(b) Example of a Wiring Diagram for Leak Test. [86:Figure A.7.4.9(b)]

A.7.5.21 See A.6.2.7.3.

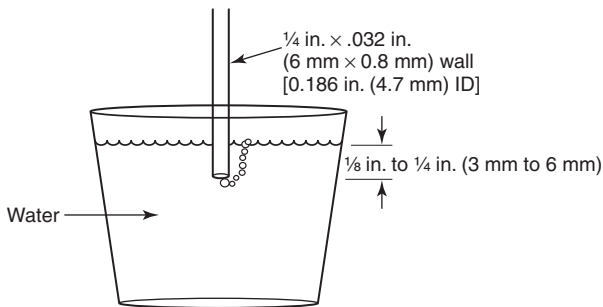
A.7.7 Examples of worker safety procedures and regulations can be found in ANSI Z117.1, *Safety Requirements for Confined Spaces*; NIOSH *Pocket Guide to Chemical Hazards*; 29 CFR 1910.24 through 1910.29; NFPA 350; and other references.

A.8.1.3 For the protection of personnel and property, consideration should also be given to the supervision and monitoring of conditions in systems other than the heating system that could cause or that could lead to a potential hazard on any installation.

Table A.7.5.14 Acceptable Leakage Rates

NPT Nominal Size (in.)	DN Nominal Size (mm)	UL 429, ANSI Z21.21/CSA 6.5				FM 7400				EN 161			
		ft ³ /hr	mL/hr cc/hr	mL/min cc/min	Bubbles/ min	ft ³ /hr	mL/hr cc/hr	mL/min cc/min	Bubbles/ min	ft ³ /hr	mL/hr cc/hr	mL/min cc/min	Bubbles/ min
0.38	10	0.0083	235	3.92	26	0.014	400	6.7	44	0.0014	40	0.67	4
0.50	15	0.0083	235	3.92	26	0.014	400	6.7	44	0.0014	40	0.67	4
0.75	20	0.0083	235	3.92	26	0.014	400	6.7	44	0.0014	40	0.67	4
1.00	25	0.0083	235	3.92	26	0.014	400	6.7	44	0.0014	40	0.67	4
1.25	32	0.0083	235	3.92	26	0.014	400	6.7	44	0.0021	60	1.00	7
1.50	40	0.0124	353	5.88	39	0.014	400	6.7	44	0.0021	60	1.00	7
2.00	50	0.0166	470	7.83	52	0.014	400	6.7	44	0.0021	60	1.00	7
2.50	65	0.0207	588	9.79	65	0.014	400	6.7	44	0.0021	60	1.00	7
3.00	80	0.0249	705	11.75	78	0.014	400	6.7	44	0.0035	100	1.67	11
4.00	100	0.0332	940	15.67	104	0.014	400	6.7	44	0.0035	100	1.67	11
6.00	150	0.0498	1410	23.50	157	0.014	400	6.7	44	0.0053	150	2.50	17
8.00	200	0.0664	1880	31.33	209	0.014	400	6.7	44	0.0053	150	2.50	17

[86: Table A.7.4.9]



▲ FIGURE A.7.5.14(c) Leak Test for a Safety Shutoff Valve.
[86:Figure A.7.4.9(c)]

N A.8.2.2.1 Use of flame rods is generally accepted as good engineering practice. However, flame rods might not be individually listed devices.

▲ A.8.2.9 For some applications, additional manual action might be required to bring the process to a safe condition. The actions resulting from a manual emergency switch action take into account the individual system design and the hazards (e.g., mechanical, combustion system, process fluid, thermal fluid) associated with changing the existing state to another state and initiates actions to cause the system to revert to a safe condition.

A.8.3 Fluid heater controls that meet the performance-based requirements of ANSI/ISA 84.00.01, *Application of Safety Instrumented Systems for the Process Industries*, or IEC 61511, *Functional Safety: Safety Instruments Systems for the Process Industry Sector*, can be considered equivalent. The determination of equivalency involves complete conformance to the safety life cycle, including risk analysis, safety integrity level selection, and safety integrity level verification, which should be submitted to the authority having jurisdiction.

A.8.3.1.4 This control circuit and its non-heater-mounted or heater-mounted control and safety components should be housed in a dusttight panel or cabinet, protected by partitions or secondary barriers, or separated by sufficient spacing from electrical controls employed in the higher voltage heater power system. Related instruments might or might not be installed in the same control cabinet. The door providing access to this control enclosure might include means for mechanical interlock with the main disconnect device required in the heater power supply circuit.

Temperatures within this control enclosure should be limited to 125°F (52°C) for suitable operation of plastic components, thermal elements, fuses, and various mechanisms that are employed in the control circuit.

A.8.4 One PLC approach to combustion interlocks on multi-burner heating systems is as follows:

- (1) Interlocks relating to purge are done via the PLC.
- (2) Purge timer is implemented in the PLC.
- (3) Interlocks relating to combustion air and gas pressure are done via the PLC.
- (4) Gas valves for pilot and burner directly connected to combustion safeguard should conform to the requirements of 8.7.2.
- (5) Operation of pilot and burner gas valves should be confirmed by the PLC.

- (6) A PLC can be set up as intermittent, interrupted, or constant pilot operation. With appropriate flame safeguard, it would be possible to provide an interrupted pilot with one flame sensor and one flame safeguard.

This standard suggests that the signal from the safety device be directly transmitted to the safety PLC input. Once the safety PLC processes the signal, the resulting data can be used for any purpose.

N A.8.4.2 Compliance with the manufacturer's safety manual would achieve actions such as, but not limited to, the PLC detecting the following:

- (1) Failure to execute any program or task containing safety logic
- (2) Failure to communicate with any safety I/O
- (3) Changes in software set points of safety functions
- (4) Failure of outputs related to safety functions
- (5) Failure of timing related to safety functions

The requirements for safety integrity level (SIL) capability in 8.4.2 pertain only to the PLC and its I/O and not to the implementation of the burner management system. The purpose of the SIL capability requirement is to provide control reliability.

A SIL 3-capable PLC includes third-party certification, the actions in A.8.4.2(1) through A.8.4.2(5), and partitioning to separate safety logic from process logic. SIL 3-capable PLCs automate many of the complexities of designing a safety system, namely, the PLCs have separate safe and nonsafe program and memory areas, and the safe areas can be locked with a signature. The inputs and outputs are monitored for stuck bits and loss of control. The firmware, application code, and timing is continually checked for faults. The outputs are internally redundant to ensure they will open even with a hardware failure. By contrast, SIL 2-capable PLCs require that many of these functions be implemented by the application code developer.

Codes have traditionally relied on independent third-party companies to test and approve safety devices suitable for use in the specific application. In the U.S., there are companies such as FM and UL that develop design standards and test safety equipment to those standards to ensure a device will operate properly when said standards are properly applied. Safety shutoff valves, scanners, combustion safeguards, and pressure switches are some of the items that need to be approved for their intended service. Combustion systems have become far more complex requiring greater computing power and greater flexibility so the industry has turned to programmable logic controllers (PLCs) to address the increased complexity. Using a PLC as the burner management system (BMS) makes the PLC a safety device. Just like every other safety component, the PLC must be held to a minimum standard to ensure that it performs predictably and reliably and that its failure modes are well understood.

When assessing a PLC's ability to perform safety functions, the internationally recognized standard IEC 61508, *Functional Safety of Electrical/Electronic Programmable Electronic Safety-Related Systems*, is a detailed quantitative guideline for designing and testing electronic safety systems. By following the directives in this standard, a piece of equipment can be certified by an independent body as capable of meeting a SIL.

The goal of IEC 61508 is to quantify the probability that the safety device will fail in an unsafe fashion when commanded to act. The term used is *probability of failure on demand (PFD)*. The data required and the circuit and software expertise to get to the PFD can be quite overwhelming but once calculated they are categorized as shown in Table A.8.4.2.

One can quickly see that the SIL number is a power of 10 change in PFD. The PFD for SIL 1 states that the probability of an unsafe failure in any year is 1 percent to 10 percent and SIL 3 has the probability of an unsafe failure in a given year of 0.1 percent to 0.01 percent. Stated otherwise, SIL 1 indicates there is the probability of an unsafe failure every 10 to 100 years and a SIL 3 system will have a probability of an unsafe failure, when demanded, once every 1,000 to 10,000 years.

When the PLC, sensor, or final element is certified to SIL 2, it carries the language “SIL 2 capable.” This is done because the device in question is capable of performing at that level only when the manufacturer’s safety manual has been followed and the installation is correct per the manufacturer’s safety manual.

Requiring that the PLC and its associated I/O be SIL 2 capable is only setting the floor for performance and helping to ensure that the hardware selected is suitable for use as a safety device — nothing else is implied.

Confusion could occur when individuals assume that because the hardware has been certified to IEC 61508 and it is SIL capable, that this infers that the “system” must now be designed according to IEC 61511, *Functional Safety: Safety Instrumented Systems for the Process Industry Sector*, or ANSI/ISA-84.00.01, *Functional Safety: Safety Instrumented Systems for the Process Industry Sector*, and that is not the intent. IEC 61511 is a performance-based standard that offers advice and guidance to quantify, analyze, and subsequently mitigate risks associated with hazards in safety instrumented systems (SIS). When following IEC 61511, each safety function such as flame failure, emergency stop, high gas pressure, and so on, is analyzed. A systematic approach is taken to determine the severity of the failure of that safety function and then the appropriate SIL is assigned to that safety function. Once assigned, the appropriate sensors, logic solvers, and final elements are chosen so that three or more of them working together can achieve the required SIL. Placing a sensor in series with a logic solver in series with a final element lowers the SIL and increases the PFD because their individual unsafe failures are cumulative, so it is possible to start with all SIL 2-capable components and end up with a SIL 1 safety function due to the cumulative failures of the individual devices. Offered here is an extremely brief and simple overview of a SIS; however, its proper application is extremely complicated requiring expertise to do correctly. The NFPA 87 requirements do not specify or imply that a SIL must be implemented, nor that a safety function meet a specified SIL target.

An extremely effective risk-reducing technique is the use of layers of protection. Analyzing the layers is called layer-of-protection-analysis (LOPA). This technique applies safeties that are independent of other safeties and therefore can’t fall victim to common mode errors or failures. As an example, picture a storage tank being filled by a pump that is controlled by a level sensor. It is important to contain the liquid but also not over-pressurize the tank. A layer of protection could be a pressure relief valve because that is independent of the pump control and the level sensor. Another layer could be a dike around the tank in case the pressure relief valve relieves or the tank fails.

Again, the dike is completely independent of the other safeties and shouldn’t suffer failures that might attack the other safeties. Common mode failures can be insidious. Think about this example of independent safeties and then think about a massive earthquake and tsunami hitting the dike, tanks, and controls — all destroyed by a common mode disturbance (e.g., Fukushima). This technique can be effective in providing independent layers of protection that can reduce the risk by a factor of 10 — or an entire SIL. Modern combustion systems take advantage of layers of protection, thus reducing the SIL of each individual safety function. For example, burner flows are set up with mechanical locking devices to stay within the burner’s stable operating range, gas pressures are monitored for variances, combustion air pressure is monitored, and the flame is scanned.

ISA prepared IEC 61511 calculations and scenarios on boiler systems and didn’t identify any functions above SIL 2, with the majority being SIL 1 or less.

N A.8.4.4.2 Consideration can be given to allow access at different levels, such as for the following:

- (1) *Level 0*: Log-in privileges not required; monitoring only.
- (2) *Level 1*: Password protected; operations non-critical-related functions, such as operating temperature and loop tuning.
- (3) *Level 2*: Password protected; process design non-safety-related functions, such as fuel/air curves, and operation limits. Proper review of the process design, consultation with suppliers, and documentation of the change should be required.
- (4) *Level 3*: Access by authorized and qualified personnel only. Safety-related logic and set points should be embedded in safety logic code.

N A.8.4.5 The burner management system logic, memory, I/O, and associated hardware should be characterized by the following:

- (1) Independent from nonsafety logic and memory
- (2) Protected from alteration by non-BMS logic or memory access
- (3) Protected from alteration by unauthorized users
- (4) This standard requires that the signal from the safety device be directly transmitted to the safety PLC input. Once the safety PLC processes the signal the resulting data can be used for any purpose.

Table A.8.4.2 SIL Level Calculated Values

Safety Integrity Level (SIL)	Probability of Failure on Demand (PFD)	Risk Reduction Factor (1/PFD)	Safety Availability (1 – PFD)
4	>0.00001 to <0.00001	>10,000 to <100,000	>99.99 to <99.999
3	>0.0001 to <0.001	>1,000 to <10,000	>99.9 to <99.99
2	>0.001 to <0.01	>100 to <1,000	>99 to <99.9
1	>0.01 to <0.1	<10 to <100	>90 to <99

N A.8.5.1.1.2(4)(d) In accordance with 8.5.1.1.2(4)(c), fuels other than natural gas, butane, or propane might require additional consideration. These additional considerations would be addressed using Section 1.5. The concern with other fuel gases is the variability of fuel gas content being delivered over time. Specific examples include landfill gas and bio gas. [86:A.8.5.1.8(4)(d)]

- (1) The fuel is methane gas.
 - (2) All burners are turned off for control purposes. All safety shutoff valves are de-energized.
 - (3) At each burner, two safety shutoff valves are closed, or a single shutoff valve is proven closed.
 - (4) All safety shutoff valves are tested for seat leakage at least semiannually.
 - (5) Safety shutoff valve seat leakage is assumed to be 1 scfh (0.0283 m³/hr @ 21°C).
- [86:A.8.5.1.8(4)(d)]

The following thoughts are offered regarding the selection of the 1 scfh (0.0283 m³/hr @ 21°C) safety shutoff valve seat leakage rate. [86:A.8.5.1.8(4)(d)]

Limited data reviewed by the committee indicate that valve seat leakage rates over 1 scfh (0.0283 m³/hr @ 21°C) are not anticipated unless the safety shutoff valve seats are exposed to extremely unusual conditions such as corrosives in the fuel gas or furnace heat allowed to back up the fuel line and burn the safety shutoff valve seat. The former condition is the basis for limiting the use of 8.5.1.1.2(4) to furnaces using natural gas, butane, or propane fuel gases. The latter condition occurred in a case where a fuel line was inappropriately opened by maintenance staff while the furnace was in operation. The furnace was promptly shut down, and the safety shutoff valves were replaced. [86:A.8.5.1.8(4)(d)]

Under operating conditions expected by this standard, it is anticipated that debris from internal fuel gas line oxidation (rust), pipe thread shavings not removed before fuel line assembly, or similar exposures can subject one safety shutoff valve to seat damage that can lead to seat leakage of one safety shutoff valve; however, it is not expected that both safety shutoff valves would experience similar seat leakage. The selected safety shutoff valve seat leakage rate of 1 scfh (0.0283 m³/hr @ 21°C) is considered conservative.

Overall, this sample calculation is based upon the following conservative conditions:

- (1) Using a safety shutoff valve seat leakage rate of 1 scfh (0.0283 m³/hr @ 21°C)
 - (2) Providing two safety shutoff valves for each fuel path
 - (3) Closing two valves or using proof of closure if closing one valve
 - (4) Assuming safety shutoff valve leakage at each burner fuel path
 - (5) Using a design limit of 25 percent of LFL
 - (6) Including the effects of elevated furnace temperature on the LFL
 - (7) Assuming no fuel exits the furnace
- [86:A.8.5.1.8(4)(d)]

The effects of temperature on fuel gas LFL were obtained from Bureau of Mines Bulletin 680, "Investigation of Fire and Explosion Accidents in the Chemical, Mining, and Fuel-Related Industries — A Manual." Figure 34 in that bulletin, "Temperature effect on lower limits of flammability of 10 normal paraffins in air at atmospheric pressure," shows temperature (°C)

versus combustibles (volume percent) and includes curves for methane, butane, and propane. It also includes a formula for computing LFL at elevated temperature. That formula, based on Bureau of Mines Bulletin 627, "Flammability Characteristics of Combustible Gases and Vapors," is as follows:

[A.8.5.1.1.2(4)d]

$$L_T = L_{25} \left[1 - 0.000721(T - 25^\circ\text{C}) \right]$$

where:

L_T = LFL at the desired elevated temperature, T (°C)

L_{25} = LFL at 25°C

T = Desired elevated temperature (°C)

[86:A.8.5.1.8(4)(d)]

Sample Problem — U.S. Customary Units

Objective. Calculate the amount of time that all burners can be turned off before the furnace atmosphere will reach 25 percent LFL. [86:A.8.5.1.8(4)(d)]

Assumptions. Furnace contains no combustibles when the burners are turned off. Furnace is under positive pressure with no air infiltration. [86:A.8.5.1.8(4)(d)]

Given the following information:

Furnace type: Batch

Furnace size: 8 ft wide × 6 ft deep × 8 ft tall

Number of burners: 5

Burner design rate: 0.8 MM Btu/hr

Burner design excess air: 10.0%

Burner design air capacity: 8800 scfh

Burner air minimum design flow: 100 scfh

Maximum leak rate each flow path*: 1 scfh

Number of burner flow paths**: 5

Furnace temperature: 900°F (482°C)

Oxygen in furnace atmosphere: 18%

Fuel: Methane

*The flow path is across one set of closed safety shutoff valves.

**The number of flow paths is the number of sets of safety shutoff valves that are closed that can leak into the furnace enclosure.

[86:A.8.5.1.8(4)(d)]

Step 1. Determine LFL at 900°F using the formula from above:

$$\begin{aligned} L_{900^\circ\text{F}} &= L_{482^\circ\text{C}} = L_{25^\circ\text{C}} \left[1 - 0.000721(T - 25^\circ\text{C}) \right] \\ &= 5.3 \left[1 - 0.000721(482^\circ\text{C} - 25^\circ\text{C}) \right] \\ &= 3.6\% \text{ by volume} \end{aligned}$$

Step 2. Determine the furnace volume:

$$V_{\text{FCE}} = L \times W \times H = 8 \text{ ft} \times 6 \text{ ft} \times 8 \text{ ft} = 384 \text{ ft}^3$$

Step 3. Determine the methane leak rate into the furnace with all burners off:

$$\begin{aligned} Q_{\text{LEAK}} &= \# \text{ flow paths} \times \text{leak rate per path} \\ &= 5 \text{ paths} \times 1 \text{ scfh/path} \\ &= 5 \text{ scfh} \end{aligned}$$

Step 4. Determine the airflow into the furnace with all burners off:

$$\begin{aligned} Q_{\text{AIR}} &= \# \text{ burners} \times \text{airflow rate per idle burner} \\ &= 5 \text{ burners} \times 100 \text{ scfh/burner} \\ &= 500 \text{ scfh} \end{aligned}$$

Step 5. Determine the percent volume methane to air through all burners:

$$\begin{aligned} \% \text{ volume methane to air} &= (Q_{\text{LEAK}} / Q_{\text{AIR}})(100\%) \\ &= (5 \text{ scfh} / 500 \text{ scfh})(100\%) \\ &= 1\% \end{aligned}$$

Step 6. Determine the percent LFL resulting from the methane flow through all burner fuel paths at 900°F:

$$\begin{aligned} \% \text{LFL}_{900^\circ\text{F}} &= (\% \text{ volume methane to air} / \text{LFL}_{900^\circ\text{F}})(100\%) \\ &= (1\% / 3.5\%)(100\%) \\ &= 28.57\% \end{aligned}$$

Step 7. Determine the time in minutes to reach 25 percent LFL with all burners off:

$$\begin{aligned} t_{\text{FCE } 25\% \text{ LFL}} &= \left[(L_{900^\circ\text{F}})(0.25) \right] / \left[(Q_{\text{LEAK}} / V_{\text{FCE}}) \right] (60 \text{ min/hr}) \\ &= \left[(0.036)(0.25) / (5 \text{ ft}^3/\text{hr} / 384 \text{ ft}^3) \right] (60 \text{ min/hr}) \\ &= 41.5 \text{ minutes} \end{aligned}$$

[86:A.8.5.1.8(4)(d)]

Conclusions. Where the value of percent LFL_{900°F} exceeds 25 percent, the burner safety shutoff valves can remain closed and burners be reignited without a repurge within a period of time not exceeding $t_{\text{FCE } 25\% \text{ LFL}}$. After $t_{\text{FCE } 25\% \text{ LFL}}$ is exceeded, a repurge of the furnace is required.

[86:A.8.5.1.8(4)(d)]

Where the value of percent LFL_{900°F} equals or is less than 25 percent, burners can be reignited at any time as long as the airflow rate Q_{AIR} is proven and interlocked in the burner management system such that loss of this proven airflow rate will require a repurge of the furnace before burner reignition is permitted.

[86:A.8.5.1.8(4)(d)]

Sample Problem — SI Units

Objective. Calculate the amount of time that all burners can be turned off before the furnace atmosphere will reach 25 percent LFL. [86:A.8.5.1.8(4)(d)]

Assumptions. Furnace contains no combustibles when the burners are turned off. Furnace is under positive pressure with no air infiltration. [86:A.8.5.1.8(4)(d)]

Given the following information:

Furnace type: Batch

Furnace size: 2.438 m wide × 1.828 m deep × 2.428 m tall

Number of burners: 5

Burner design rate: 234.2 kW

Burner design excess air: 10.0 percent

Burner design air capacity: 249.2 m³/hr @ 21°C

Burner air minimum design flow: 2.83 m³/hr @ 21°C

Maximum leak rate each flow path*: 0.0283 m³/hr @ 21°C

Number of burner flow paths**: 5

Furnace temperature: 482°C (900°F)

Oxygen in furnace atmosphere: 18 percent

Fuel: Methane

*The flow path is across one set of closed safety shutoff valves.

**The number of flow paths is the number of sets of safety shutoff valves that are closed that can leak into the furnace enclosure.

[86:A.8.5.1.8(4)(d)]

Step 1. Determine LFL at 482°C using the formula from above:

$$\begin{aligned} L_{482^\circ\text{C}} &= L_{25} \left[1 - 0.000721(T - 25^\circ\text{C}) \right] \\ &= 5.3(1 - 0.000721)(482^\circ\text{C} - 25^\circ\text{C}) \\ &= 3.6 \% \text{ by volume} \end{aligned}$$

Step 2. Determine the furnace volume:

$$V_{\text{FCE}} = L \times W \times H = 2.438 \text{ m} \times 1.828 \text{ m} \times 2.428 \text{ m} = 10.87 \text{ m}^3$$

Step 3. Determine the methane leak rate into the furnace with all burners off:

$$\begin{aligned} Q_{\text{LEAK}} &= \# \text{ flow paths} \times \text{leak rate per path} \\ &= 5 \text{ paths} \times 0.0283 \text{ m}^3/\text{hr} @ 21^\circ\text{C}/\text{path} \\ &= 0.142 \text{ m}^3/\text{hr} @ 21^\circ\text{C} \end{aligned}$$

Step 4. Determine the airflow into the furnace with all burners off:

$$\begin{aligned} Q_{\text{AIR}} &= \# \text{ burners} \times \text{airflow rate per idle burner} \\ &= 5 \text{ burners} \times 2.83 \text{ m}^3/\text{hr} @ 21^\circ\text{C}/\text{burner} \\ &= 14.2 \text{ m}^3/\text{hr} @ 21^\circ\text{C} \end{aligned}$$

Step 5. Determine the percent volume methane to air through all burners:

$$\begin{aligned} \% \text{ vol. methane to air} &= (Q_{\text{LEAK}} / Q_{\text{AIR}})(100\%) \\ &= (0.142 \text{ m}^3/\text{hr} @ 21^\circ\text{C} / 14.2 \text{ m}^3/\text{hr} @ 21^\circ\text{C})100\% \\ &= 1\% \end{aligned}$$

Step 6. Determine the percent LFL resulting from the methane flow through all burner fuel paths at 482°C:

$$\begin{aligned} \%LFL_{482^{\circ}\text{C}} &= (\% \text{ volume methane to air} / LFL_{482^{\circ}\text{C}})(100\%) \\ &= (1\% / 3.5\%)(100\%) \\ &= 28.57\% \end{aligned}$$

Step 7. Determine the time in minutes to reach 25 percent LFL with all burners off:

$$\begin{aligned} t_{\text{PCE } 25\% \text{ LFL}} &= \left[(L_{482^{\circ}\text{C}})(0.25) \right] / \left[(Q_{\text{LEAK}} / V_{\text{PCE}}) \right] (60 \text{ min/hr}) \\ &= \left[(0.036)(0.25) \right] / \left[(0.142 \text{ m}^3/\text{hr})(10.87 \text{ m}^3) \right] (60 \text{ min/hr}) \\ &= 41.3 \text{ minutes} \end{aligned}$$

[86:A.8.5.1.8(4)(d)]

Conclusions. Where the value of percent $LFL_{482^{\circ}\text{C}}$ exceeds 25 percent, the burner safety shutoff valves can remain closed and burners be reignited without a repurge within a period of time not exceeding $t_{\text{PCE } 25\% \text{ LFL}}$. After $t_{\text{PCE } 25\% \text{ LFL}}$ is exceeded, a repurge of the furnace is required.

[86:A.8.5.1.8(4)(d)]

Where the value of percent $LFL_{482^{\circ}\text{C}}$ equals or is less than 25 percent, burners can be reignited at any time as long as the airflow rate Q_{AIR} is proven and interlocked in the burner management system such that loss of this proven airflow rate will require a repurge of the furnace before burner reignition is permitted.

[86:A.8.5.1.8(4)(d)]

A.8.5.1.2.1(1) Sampling in more than one location could be necessary to adequately confirm the absence of combustible vapors or gas in the heating chambers and all the passages that contain the products of combustion.

A.8.5.1.2.2(2) Consideration should be given to the proximity of operating burners when the common combustion chamber exception to repeating purges is utilized. Accumulation of localized vapors or atmospheres is possible even with an operating burner in a chamber, depending on the size of the chamber, the number of burners, and the proximity of operating burners to the accumulation. In addition to proximity, burner design and exposure of the flame can also impact the ability of the operating burner to mitigate vapor or gaseous accumulations.

A.8.5.2 When the purge is complete, there should be a limit to the time between the completed purge and the trial for ignition. Delay can result in the need for a repurge.

A.8.6.5 Interlocks for combustion air minimum pressure or flow can be provided by any of the following methods:

- (1) A low-pressure switch that senses and monitors the combustion air source pressure. In industrial combustion applications with modulating flow control valves downstream of the combustion air blower, it is most common to interlock the constant combustion air source pressure on single-burner and multiburner systems to meet the requirements of 8.6.3 and 8.6.5. Because the combustion airflow is proved during each purge cycle along with the combustion air source pressure, the most common convention is to prove the combustion air source pressure during burner operation following purge. In a multiburner system, the proof of combustion airflow during

purge proves that any manual valves in the combustion air system are in an adequately open position. These manual air valves are provided for maintenance and combustion airflow balancing among burners in a temperature control zone. In combustion air supply systems that use either an inlet damper or a speed control, the combustion air pressure can fall below reliably repeatable levels with listed pressure switch interlocks at low fire. For these systems, the proof of minimum airflow can be a more reliable interlock.

- (2) A differential pressure switch that senses the differential pressure across a fixed orifice in the combustion air system. In combustion air supply systems that use either an inlet damper or a speed control, the combustion air pressure can fall below reliably repeatable levels with listed pressure switch interlocks at low fire. For these systems, the proof of minimum airflow by use of a differential pressure switch across an orifice can be a more reliable interlock.
- (3) An airflow switch. In combustion air supply systems that use either an inlet damper or a speed control, the combustion air pressure can fall below reliably repeatable levels with listed pressure switch interlocks at low fire. For these systems, the proof of minimum airflow by use of an airflow switch can be a more reliable interlock.
- (4) A pressure switch on the inlet (suction) side of an induced draft (I.D.) fan. For heaters where airflow is induced by an I.D. fan, a pressure switch on the inlet of the I.D. fan can be used to prove that the minimum required suction pressure is available, which along with proof that air and stack dampers are not closed can be used as a minimum air flow interlock.
- (5) For combustion systems that use high pressure gas/air to induce (inspire) air locally at each burner or that use natural draft to induce air into the burners or combustion chamber, proof that air and stack dampers are not closed/open to at least a minimum position can be used to satisfy the intent of a low air flow interlock. It is not possible to monitor and prove the availability of combustion air for fluid heaters that use natural draft or air inspiring burners.

A.8.6.6 Where compressed air is utilized, the maximum safe operating pressure can be exceeded.

A.8.7.1.2 See Figure A.8.7.1.2.

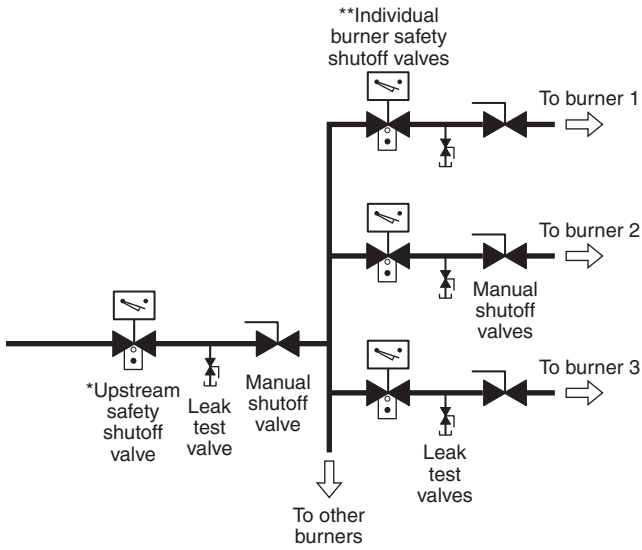
A.8.7.1.8 Backpressure can lift a valve from its seat, permitting combustion gases to enter the fuel system. Examples of situations that create backpressure conditions are leak testing, combustion chamber backpressure, and combustion air pressure during repurge.

A.8.7.1.9 See 6.2.8.2.

A.8.7.2 See Figure A.8.7.2.

A.8.7.2.2 An additional safety shutoff valve located to be common to the heating system and that is proved closed and interlocked with the pre-ignition purge circuit can be used to meet the requirements of 8.7.2.2.

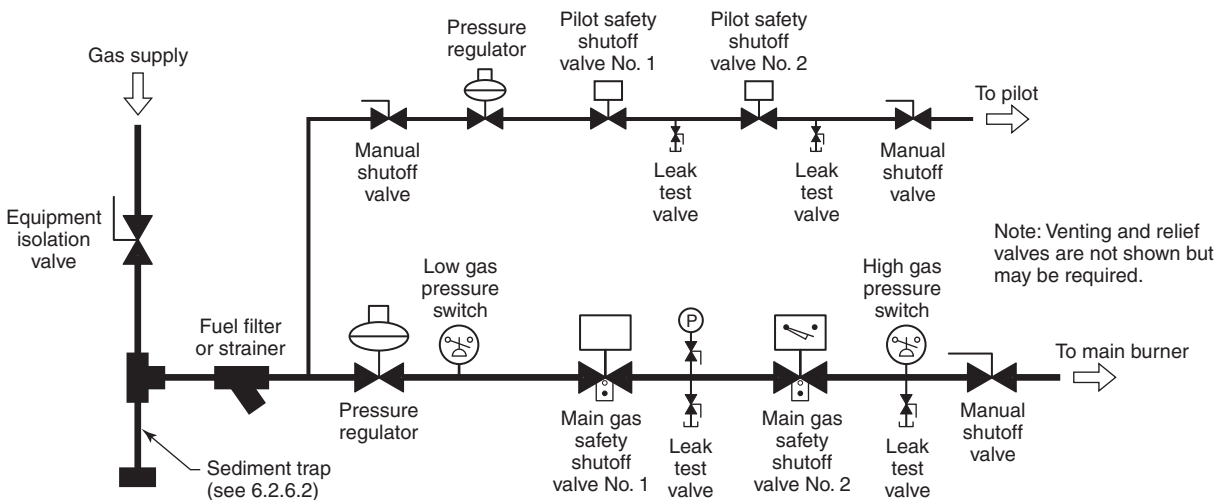
A.8.7.3.3 An additional safety shutoff valve that is located so as to be common to the heating system and that is proved closed and interlocked with the pre-ignition purge circuit can be used to meet the requirements of 8.7.3.2.



*Interlocked with pre-ignition prepurge
 **Interlocked with upstream safety shutoff valve

FIGURE A.8.7.1.2 Multiple Burner System Using Proof-of-Closure Switches.

Key	Safety shutoff valve requirements		
Safety shutoff valve	Under 150,000 Btu/hr	150,000 to 400,000 Btu/hr	Over 400,000 Btu/hr
Safety shutoff valve with visual identification			
Safety shutoff valve with visual identification and proof of closure			



For SI units: 1000 Btu/hr = 0.293 W

FIGURE A.8.7.2 Typical Piping Arrangement Showing Fuel Gas Safety Shutoff Valves.

N A.8.9.2 Figure A.8.9.2 shows the sequences that need to occur to achieve a safety shutoff valve (SSOV) closing time of not more than 5 seconds following loss of flame. Typical SSOVs have a maximum closing time of 1 second; however, some listed or approved valves can have longer times.

A.8.9.4 Ultraviolet detectors can fail in such a manner that the loss of flame is not detected. When these detectors are placed in continuous service, failures can be detected by use of a self-checking ultraviolet detector or by periodic testing of the detector for proper operation.

Flame detectors (scanners) with combustion safeguards that continuously operate beyond the maximum interval recommended by the combustion safeguard and flame detector manufacturer's instructions would not be compliant.

N A.8.9.6 Flame rods utilizing dc flame detection circuits can be fooled by flame rod current leakage, or a short to ground, and then report a false-positive flame. This means using ac excitation to sense flame rather than dc.

A.8.11 Some liquid fuel can become too viscous for proper atomization at low temperatures. Some liquid fuels can congeal if their temperature falls below their pour point. Some liquid fuels can vaporize at higher temperatures and negatively affect burner stability.

A.8.12.1 The fact that oil or gas is considered a standby fuel should not reduce the safety requirements for that fuel.

A.8.15.5 Temperature-sensing components, such as thermocouple and extension wires, that are not rated for the environment are at greater risk of short-circuiting.

Δ A.8.17.1.1 Abnormal conditions that could occur and require automatic or manual de-energization of affected circuits are as follows:

- (1) A system fault (short circuit) not cleared by normally provided branch-circuit protection (*see NFPA 70*)
- (2) The occurrence of excess temperature in a portion of the furnace that has not been abated by normal temperature-controlling devices

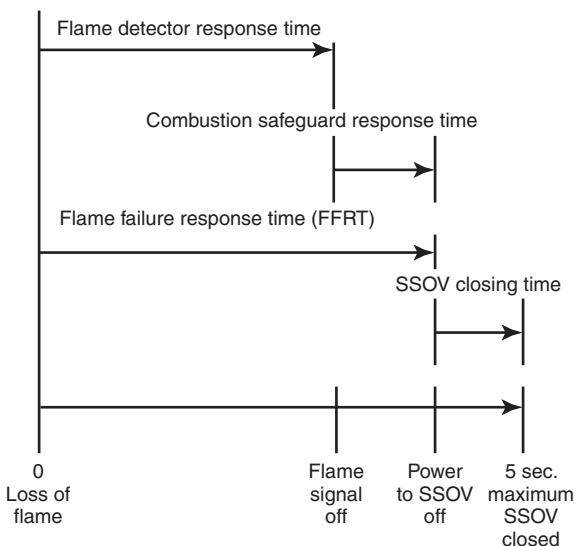


FIGURE A.8.9.2 Diagram Showing SSOV Closing Time Operation of Not More Than 5 Seconds (not to scale).

- (3) A failure of any normal operating controls where such failure can contribute to unsafe conditions
- (4) A loss of electric power that can contribute to unsafe conditions

Δ A.8.17.1.5 The permitted use in 8.17.1.5 could necessitate the derating of some components listed by manufacturers for other types of industrial service and motor control and as shown in Table A.8.17.1.5.

A.8.17.2 The excess temperature set point should be set no higher than the maximum element temperature specified by the element manufacturer. The fluid should be protected with an additional temperature limit controller to prevent excess fluid temperatures.

A.8.17.2.5 Temperature-sensing components, such as thermocouple and extension wires, that are not rated for the environment are at greater risk of short-circuiting.

A.8.17.2.6 The sensing element should be positioned where the difference between the temperature control sensor and the excess temperature limit sensor is minimized. The temperature-sensing element of the excess temperature limit interlock should be located where it will sense the excess temperature condition that will cause the first damage to the heating element.

N A.8.18.1 In addition to the low-level interlock, on large volume systems, it is good practice to use dynamic leak detection (rate of change monitoring) on expansion tanks. Dynamic leak detection is encouraged because it will detect abnormal fluid loss over time whereas a low-level switch is a single set point and often located just above tank empty. In some situations, expansion tanks can be several thousand gallons in capacity. Therefore, if only low-level monitoring is provided, several thousand gallons could escape the system before the alarm is sounded. With dynamic leak detection, alarm notification of the falling oil level will be made much sooner.

N A.8.18.2.1 Detecting only flow/no flow conditions is not adequate. A pressure switch at the pump discharge and a pump rotation switch are examples of proving devices that are not recommended to prove minimum flow because unexpected blockages in the heater tubes will not be detected by these devices. Orifice plate(s) located at the outlet of a fluid heater and used with differential pressure interlock(s) are a reliable way of proving the minimum flow. If pressure drop across the heater is used, additional interlocks and precautions should be considered.

N A.9.1.2 If other gases or hydrocarbons are being heated, care should be taken to avoid excessive film temperatures and/or cooking.

A.9.1.3 The maximum bulk fluid temperature is typically measured at the outlet of the heater.

N A.9.1.4.3 Balanced flow is typically achieved by the piping geometry/symmetry between passes, balancing trim valves, or fixed flow restrictions. If fluid flow rates fall below the designed minimum flow rate, fluid overheating and subsequent degradation can occur. If balancing trim valves are used, the flow through each pass should be monitored and interlocked into the combustion safety circuitry. Manual balancing trim valves should also have provisions to lock the valve to prevent inadvertent adjustment of the valve.

N A.9.1.5 The fluid heating vessel, be it a coil or other design, is often designed to the ASME *Boiler and Pressure Vessel Code* (BPVC), Section I or Section VIII, Division 1. In such cases, the BPVC provides the necessary requirements and guidance for the installation and sizing of relief devices. Additional guidance can be found in API STD 520, *Sizing, Selection, and Installation of Pressure-relieving Devices*, and API STD 521, *Pressure-relieving and Depressuring Systems*.

A.9.1.6 Three-way valves or an automatic process equipment bypass can be used to maintain the minimum flow through the heater.

Δ A.9.2.1.1 Air-cooled or water-cooled pumps with mechanical seals, canned motor pumps, and seal-less pumps, that are magnetically coupled are examples of pumps that are used. If magnetically coupled pumps are used, over-temperature protection of the pump coupling location should be provided. Packing-based seals are prone to leakage and are not recommended. Face-type mechanical seals are preferred over other designs. The pump material selection should take into account the possible thermal shock experienced under fire suppression scenarios. The mechanical seal can be protected by any one of a variety of standard seal flush, quench, and cooling plans.

A.9.2.1.2 The pump manufacturer, the mechanical seal manufacturer, the fluid manufacturer, the heater manufacturer, or other experienced resources should be consulted to provide recommendations on the appropriate pump for the application.

A.9.2.1.5 Loss of cooling can cause seal failure and a subsequent fire hazard.

A.9.2.1.6 Misalignment can cause seal failure and a subsequent fire hazard.

A.9.2.1.7 The alignment of the pump can change during the transition from cold to operating temperatures.

A.9.2.1.9 Examples of devices to protect pumps can be drip legs, strainers, filters, and screens.

Δ A.9.2.2 If the fluid being relieved is combustible, measures should be taken to prevent ignition of the vapors or aerosols from the vent. Additional guidance can be found in NFPA 30.

N A.9.2.2.1.3 Gaseous effluents should not impinge on equipment, support, building, windows, or materials because the gas could ignite and create a fire hazard.

Gaseous effluents should not impinge on personnel at work in the area or in the vicinity of the exit of the vent pipe because the gas could ignite and create a fire hazard.

Gaseous effluents should not be vented in the vicinity of air intakes, compressor inlets, or other devices that utilize ambient air.

A.9.2.2.2.1 Approved locations can include drain tanks, fill tanks, supplemental storage tanks, knock-out drums, and catch tanks.

N A.9.2.2.2.2.2 Recognized and generally accepted good engineering practices could include, but are not limited to, ASME *Boiler and Pressure Vessel Code*, API STD 520, *Sizing, Selection, and Installation of Pressure-relieving Devices*, and API STD 521, *Pressure-relieving and Depressuring Systems*.

A.9.2.2.2.5 Secondary containment of effluent containment vessel should be considered if the fluid is flammable (see NFPA 30). Toxic, or corrosive liquids are outside the scope of this standard, and other standards can be consulted for appropriate venting.

A.9.2.3.2 Gate and ball valves can be used for isolation purposes, and globe or wafer-style butterfly valves can be used for throttling purposes. Care should be exercised in selection of valve packing materials to avoid leaks and a possible fire or emission hazard. Valves with bellows sealed stems can be selected if the fluid in the system is particularly prone to leakage, has a high vapor pressure, has a low flash point, or might present any other life-safety hazard if it is allowed to leak into the environment.

Δ Table A.8.17.1.5 Heater Ratings

Control Device	Resistance-Type Heating Devices		Infrared Lamp and Quartz Tube Heaters	
	Rating (% actual load)	Permissible Current (% rating)	Rating (% actual load)	Permissible Current (% rating)
Fusible safety switch (% rating of fuse employed)	125	80	133	75
Individually enclosed circuit breaker	125	80	125	80
Circuit breakers in enclosed panelboards	133	75	133	75
Magnetic contactors				
0–30 amperes	111	90	200	50
30–100 amperes	111	90	167	60
150–600 amperes	111	90	125	80

Note: This table applies to maximum load or open ratings for safety switches, circuit breakers, and industrial controls approved under current National Electrical Manufacturers Association (NEMA) standards.

N A.9.2.4.1 Where possible, the expansion tank should be located at the high point of the system. If this is not possible, inert gas pressure can be applied to the tank vapor space to provide sufficient pressure to keep all parts of the system filled with fluid. If inert gas pressure is used, the system can have both a pressure control regulator (or control valve) and a backpressure regulator (or control valve). The user might wish to consider the installation of a low-pressure alarm or a low-pressure interlock to use in the event of low blanket gas pressure. The pressure relief valve is installed on the tank to protect against overpressure and is not a control device. The pressure relief valve cannot be used as a backpressure control device.

Δ A.9.2.4.3 The operating temperature, the expansion coefficient of the fluid, and the system volume are used to calculate the volume of the expansion tank. Some vapor space should remain in the tank when the system is at operating temperature. If the tank operates at atmospheric pressure and is located outdoors, an inert gas blanket should be considered to minimize moisture ingress into the system.

A.9.2.4.4 In addition to the primary expansion line, it is advisable to have a second entry point so that gases can separate efficiently from the fluid during, for example, initial fills, after maintenance, or if water has entered the system. This can be accomplished with an in-line de-aerator, a valved line parallel to the primary expansion line, or a valved line directly from the heater outlet to the top of the expansion tank.

A.9.2.4.8 The expansion tank pressurized with inert gas should be considered if the tank contents can be at a temperature such that exposure of the fluid to air would cause degradation of the fluid or the fluid manufacturer recommends use of an inert blanket. Nitrogen is typically used as the inert blanket. Other gases, such as carbon dioxide, can be used. In the oil and gas industry, it is common to use flammable gases. If flammable gases are used, other precautions might be required. It is not advisable to pressurize the expansion tank with compressed air, as fluid oxidative degradation will likely occur.

A.9.2.4.9 Consideration should be given to pressure surges that can occur during process upsets that can expose the expansion tank to pressures greater than 15 psi (100 kPa). An example of a common process upset is the rapid pressure rise due to water flashing to steam. For this reason, many users specify expansion tanks that meet the requirements of ASME *Boiler and Pressure Vessel Code*, Section VIII Division 1.

A.9.2.4.10 Hazards associated with low pump suction pressure include, but are not limited to, the following:

- (1) Pump cavitation
- (2) Damage to the pump impeller
- (3) Failure of the mechanical seal with associated release of fluid into the environment

A.9.2.4.11 See A.9.2.4.10.

N A.9.2.4.12 These means can include air separators, warm-up lines from the heater outlets, or a double-legged expansion tank. These means can also include a system that is designed with appropriate vents so that air and water can be removed during fill and start-up.

A.10.1 This standard addresses the fire protection needs of fluid heaters and related equipment. Fire protection needs external to this equipment are beyond the scope of this standard.

Fire extinguishing systems and methods should be designed in accordance with fire protection engineering principles and applicable standards.

Hazards associated with combustible or high temperature fluid migration to other areas through open or incompletely sealed floors should be considered.

Fixed fire protection for the equipment can consist of sprinklers, water spray, carbon dioxide, foam, dry chemical, water mist, or steam extinguishing systems. The extent of the protection depends on the construction, arrangement, and location of the fluid heater or related equipment as well as the materials being processed.

Hydrogen and other flammable gas fires normally are not extinguished until the supply of gas has been shut off because of the danger of re-ignition or explosion. Re-ignition can occur if a hot surface adjacent to the flame is not cooled with water or by other means. Personnel should be cautioned that hydrogen flames are invisible and do not radiate heat.

A.10.1.1 Where automatic fire protection systems are installed, alarming and actuation can be based on one or more of the following criteria:

- (1) High values from differential flow detectors comparing fluid flowing into and out of the heater
- (2) Low fluid level in the expansion tank (Note: This function can be used only if the expansion tank level is not automatically corrected with a pumped resupply of fluid from the storage tank.)
- (3) High values from flue gas combustibles analyzer
- (4) Increase in opacity of smoke exiting the heater
- (5) High flue gas temperature
- (6) Increase in carbon monoxide in flue gas
- (7) Decrease in oxygen in flue gas

A.10.1.4 Fire resistance duration, corrosion resistance, and weathering resistance should be considered when fireproofing is applied to heater structural members.

A.10.2.1 Sprinkler protection alone cannot ensure that a fire involving a fluid release will not cause catastrophic heater or building damage.

Annex B Example Maintenance Checklist

This annex is not a part of the requirements of this NFPA document but is included for informational purposes only.

B.1 General. The recommendations in this annex are for the maintenance of equipment. Different types of equipment need special attention. A preventive maintenance program, including adherence to the manufacturer's recommendations, should be established and followed. The program should establish a minimum maintenance schedule that includes inspection and action on the recommendations provided in this annex. An adequate supply of spare parts should be maintained, and inoperable equipment should be cleaned, repaired, or replaced, as required.

B.2 Visual Operational Checklist. The following operational checks should be performed:

- (1) Check burners for ignition and combustion characteristics. Verify flame shape and confirm that flames are not impinging on heat transfer surfaces.

- (2) Check pilots or igniters, or both, for main burner ignition.
- (3) Check air-to-fuel ratios.
- (4) Check operating temperature.
- (5) Check sight drains and gauges for cooling waterflow and water temperature.
- (6) Check that burners and pilots have adequate combustion air.
- (7) Check the operation of ventilating equipment.
- (8) Inspect heater interior for signs of fluid leaks or tube overheating (e.g., ballooning or discoloration). Consider using infrared scanner to observe furnace interior and identify hot spots or other abnormalities.
- (9) After each fuel shutoff, check the heater interior for glowing tubes (which could indicate fouling or plugging), flames due to combustible fluid leaks, or flames from burners due to fuel leaking past safety shutoff valves.
- (16) Clean the fire-check screens and valve seats and test for freedom of valve movement.
- (17) Inspect burners and pilots for proper operation, air-to-fuel ratio, plugging, and deterioration. Burner refractory parts should be examined to ensure good condition.
- (18) Check all orifice plates, air-gas mixers, flow indicators, meters, gauges, and pressure indicators; if necessary, clean, repair, or replace them. Check calibrations as appropriate.
- (19) Check the ignition cables and transformers.
- (20) Check the operation of modulating controls.
- (21) Check the integrity of and the interior of the equipment, ductwork, and ventilation systems for cleanliness and flow restrictions.
- (22) Test pressure relief valves; repair or replace them as necessary.

B.3 Regular Shift Checklist. The following operational checks should be performed at the start of every shift:

- (1) Check the set point of control instrumentation.
- (2) Check positions of hand valves, manual dampers, secondary air openings, and adjustable bypasses.
- (3) Check blowers, fans, compressors, and pumps for unusual bearing noise and shaft vibration; if V-belt driven, belt tension and belt fatigue should be checked.
- (4) Perform lubrication in accordance with manufacturer's requirements.

B.4 Periodic Checklist. The following maintenance checklist should be completed at intervals based on manufacturers' recommendations and the requirements of the process:

- (1) Inspect flame-sensing devices for condition, location, and cleanliness.
- (2) Inspect thermocouples and lead wire for shorts and loose connections. A regular replacement program should be established for all control and safety thermocouples. The effective life of thermocouples varies, depending on the environment and temperature, so those factors should be considered in setting up a replacement schedule.
- (3) Check setting and operation of low and high temperature limit devices.
- (4) Test visual and audible alarm systems for proper signals.
- (5) Check igniters and verify proper gap.
- (6) Check all pressure switches for proper pressure settings.
- (7) Check control valves, dampers, and actuators for free, smooth action and adjustment.
- (8) Test the interlock sequence of all safety equipment. If possible, the interlocks should manually be made to fail, thus verifying that the related equipment operates as specified by the manufacturer.
- (9) Test the safety shutoff valves for operation and tightness of closure as specified by the manufacturer.
- (10) Test the main fuel manual valves for operation and tightness of closure as specified by the manufacturer.
- (11) Test the pressure switches for proper operation at set point.
- (12) Visually inspect electrical switches, contacts, and controls for signs of arcing or contamination.
- (13) Test instruments for proper response to thermocouple failure.
- (14) Clean or replace the air blower filters.
- (15) Clean the water, fuel, gas compressor, and pump strainers.
- (23) Inspect air, water, fuel, and impulse piping for leaks.
- (24) Inspect radiant tubes and heat exchanger tubes for leakage; repair them as necessary.
- (25) Lubricate the instrumentation, valve motors, valves, blowers, compressors, pumps, and other components.
- (26) Test and recalibrate instrumentation in accordance with manufacturers' recommendations.
- (27) Test flame safeguard units. A complete shutdown and restart should be made to check the components for proper operation.
- (28) Check electric heating elements for contamination, distortion, cracked or broken refractory element supports, and proper position. Repair or replace elements if grounding or shorting could occur.
- (29) Check electric heating element terminals for tightness.
- (30) Perform required pressure vessel or pressure piping inspection and testing (e.g., in accordance with the requirements of the National Board of Boiler and Pressure Vessel Inspectors).
- (31) If indications of overheating are observed, drain the fluid from the heater, perform an internal inspection to evaluate and eliminate the cause of the overheating, and assess the need for repair.
- (32) Consider nondestructive testing of wall thicknesses by eddy-current, ultrasonic, or other means.
- (33) Perform a fluid system leakage test by pressurizing the entire system to 1½ times working pressures or maximum pump pressure, whichever is lower, but do not exceed the pressure setting of the pressure relief valves.

Annex C Steam Extinguishing Systems

This annex is not a part of the requirements of this NFPA document but is included for informational purposes only. This annex is extracted from NFPA 86, Standard for Ovens and Furnaces, Annex F.

- ▲ **C.1 General.** Steam extinguishes fire by the exclusion of air or the reduction of the oxygen content of the atmosphere in a manner similar to that of carbon dioxide or other inert gases. The use of steam precedes other modern smothering systems. Steam is not a practical extinguishing agent except where a large steam supply is continuously available. The possible burn hazard should be considered in any steam extinguishing installation. A visible cloud of condensed vapor, popularly described as steam, is incapable of extinguishment.

Although many fires have been extinguished by steam, its use often has been unsuccessful due to lack of understanding of its limitations. Except for specialized applications, other types of smothering systems are preferred in modern practice. No complete standard covering steam smothering systems has yet been developed.

One pound of saturated steam at 212°F (100°C) and normal atmospheric pressure has a volume of 26.75 ft³ (0.76 m³). A larger percentage of steam is required to prevent combustion than in the case of other inert gases used for fire extinguishment. Fires in substances that form glowing coals are difficult to extinguish with steam, owing to the lack of cooling effect. For some types of fire, such as fires involving ammonium nitrate and similar oxidizing materials, steam is completely ineffective.

Steam smothering systems should be permitted only where oven temperatures exceed 225°F (107°C) and where large supplies of steam are available at all times while the oven is in operation. Complete standards paralleling those for other extinguishing agents have not been developed for the use of steam as an extinguishing agent, and, until this is done, the use of this form of protection is not as dependable, nor are the results as certain, as those provided by water, carbon dioxide, dry chemical, or foam.

Release devices for steam smothering systems should be manual, and controls should be arranged to close down oven outlets to the extent practicable.

C.2 Life Hazard.

▲ C.2.1 Equipment should be arranged to prevent operating of steam valves when doors of box-type ovens or access doors or panels of conveyor ovens are open.

C.2.2 A separate outside steam manual shutoff valve should be provided for closing off the steam supply during oven cleaning. The valve should be locked closed whenever employees are in the oven.

▲ C.2.3 The main valve should be designed to open slowly, because the release should first open a small bypass to allow time for employees in the vicinity to escape and also to protect the piping from severe water hammer. A steam trap should be connected to the steam supply near the main valve to keep this line free of condensate.

C.3 Steam Outlets. If steam is used, steam outlets should be sufficiently large to supply 8 lb/min (3.6 kg/min) of steam for each 100 ft³ (2.8 m³) of oven volume. The outlets preferably should be located near the bottom of the oven, but if the oven is not over 20 ft (6.1 m) high, they might be located near the top, pointing downward. Steam jets should be directed at dip tanks (in a manner to avoid disturbing the liquid surface) or other areas of special hazard.

Annex D Informational References

▲ D.1 Referenced Publications. The documents or portions thereof listed in this annex are referenced within the informational sections of this standard and are not part of the requirements of this document unless also listed in Chapter 2 for other reasons.

▲ D.1.1 NFPA Publications. National Fire Protection Association, 1 Batterymarch Park, Quincy, MA 02169-7471.

NFPA 30, *Flammable and Combustible Liquids Code*, 2018 edition.

NFPA 31, *Standard for the Installation of Oil-Burning Equipment*, 2016 edition.

NFPA 33, *Standard for Spray Application Using Flammable or Combustible Materials*, 2016 edition.

NFPA 34, *Standard for Dipping, Coating, and Printing Processes Using Flammable or Combustible Liquids*, 2015 edition.

NFPA 54, *National Fuel Gas Code*, 2018 edition.

NFPA 56, *Standard for Fire and Explosion Prevention During Cleaning and Purging of Flammable Gas Piping Systems*, 2017 edition

NFPA 68, *Standard on Explosion Protection by Deflagration Venting*, 2013 edition.

NFPA 69, *Standard on Explosion Prevention Systems*, 2014 edition.

NFPA 70[®], *National Electrical Code[®]*, 2017 edition.

NFPA 85, *Boiler and Combustion Systems Hazards Code*, 2015 edition.

NFPA 86, *Standard for Ovens and Furnaces*, 2015 edition.

NFPA 91, *Standard for Exhaust Systems for Air Conveying of Vapors, Gases, Mists, and Particulate Solids*, 2015 edition.

NFPA 350, *Guide for Safe Confined Space Entry and Work*, 2016 edition.

NFPA 497, *Recommended Practice for the Classification of Flammable Liquids, Gases, or Vapors and of Hazardous (Classified) Locations for Electrical Installations in Chemical Process Areas*, 2017 edition.

D.1.2 Other Publications.

▲ D.1.2.1 ANSI Publications. American National Standards Institute, Inc., 25 West 43rd Street, 4th Floor, New York, NY 10036.

ANSI A14.3, *Ladders — Fixed — Safety Requirements*, 2008.

ANSI/ISA 84.00.01, *Application of Safety Instrumented Systems for the Process Industries*, 2004.

ANSI Z21.18/CSA 6.3, *Standard for Gas Appliance Pressure Regulators*, 2012.

ANSI Z21.21/CSA 6.5, *Automatic Valves for Gas Appliances*, 2005.

ANSI Z117.1, *Safety Requirements for Confined Spaces*, 2009.

■ D.1.2.2 API Publications. American Petroleum Institute, 1220 L Street, NW, Washington, DC 20005-4070.

API RP 500, *Recommended Practice for Classification of Locations for Electrical Installations at Petroleum Facilities Classified as Class 1, Division 1 and Division 2*, 2012.

API STD 520, *Sizing, Selection, and Installation of Pressure-relieving Devices*, 2014.

API STD 521, *Pressure-relieving and Depressuring Systems*, 2014.

Δ D.1.2.3 ASME Publications. American Society of Mechanical Engineers, Two Park Avenue, New York, NY 10016-5990.

ANSI/ASME B31.3, *Process Piping*, 2014.

Boiler and Pressure Vessel Code, 2015.

D.1.2.4 BS EN Publications. CENELEC, European Committee for Electrotechnical Standardization, GEN-CENELEC Management Centre, Avenue Marnix 17, 4th floor, B-1000, Brussels, Belgium.

BS EN 161, *Automatic Shut-Off Valves for Gas Burners and Gas Appliances*, 2007, Amendment 3, 2013.

BS EN 1643, *Valve Proving Systems for Automatic Shut-Off Valves for Gas Burners and Gas Appliances*, 2014.

D.1.2.5 FM Publications. FM Global, 270 Central Avenue, P.O. Box 7500, Johnston, RI 02919.

FM 7400, *Approval Standard for Liquid and Gas Safety Shutoff Valves*, 1998.

Δ D.1.2.6 IEC Publications. International Electrotechnical Commission, 3, rue de Varembe, P.O. Box 131, CH - 1211 Geneva 20, Switzerland.

IEC 61511, *Functional Safety: Safety Instruments Systems for the Process Industry Sector*, 2004.

D.1.2.7 NBBPVI Publications. National Board of Boiler and Pressure Vessel Inspectors, 1055 Crupper Avenue, Columbus, OH 43229.

NBBI NB-23, *National Board Inspection Code*, 2015.

D.1.2.8 NIOSH Publications. National Institute for Occupational Safety and Health, Centers for Disease Control and Prevention, 1600 Clifton Road, Atlanta, GA 30329-4027.

NIOSH Pocket Guide to Chemical Hazards, 2015.

Δ D.1.2.9 UL Publications. Underwriters Laboratories Inc., 333 Pfingsten Road, Northbrook, IL 60062-2096.

UL 353, *Standard for Limit Controls*, 1994, revised 2011.

UL 429, *Standard for Electrically Operated Valves*, 2013.

D.1.2.10 U.S. Government Publications. U.S. Government Publishing Office, 732 North Capitol Street, NW, Washington, DC 20401-0001.

Kuchta, J. M., "Investigation of Fire and Explosion Accidents in the Chemical, Mining, and Fuel-Related Industries — A Manual," Bureau of Mines Bulletin 680, 1985.

Title 29, Code of Federal Regulations, Parts 1910, "Occupational Safety and Health Standards."

Zabetakis, M. G., "Flammability Characteristics of Combustible Gases and Vapors," Bureau of Mines Bulletin 627, 1965.

D.2 Informational References. The following documents or portions thereof are listed here as informational resources only. They are not a part of the requirements of this document.

D.2.1 ABMA Publications. American Boiler Manufacturers Association, 8221 Old Courthouse Road, Suite 207, Vienna, VA 22182.

ABMA 203, *A Guide to Clean and Efficient Operation of Coal-Stoker-Fired Boilers*, 2002.

ABMA 307, *Combustion Control Guidelines for Single Burner Fire-tube and Watertube Industrial/Commercial/Institutional Boilers*, 1999.

D.2.2 ANSI Publications. American National Standards Institute, Inc., 25 West 43rd Street, 4th Floor, New York, NY 10036.

ISA S77.41.01, *Fossil Fuel Power Plant Boiler Combustion Controls*, 2005.

ANSI/ISA S77.42.01, *Fossil Fuel Plant Feedwater Control System — Drum Type*, 2006.

ISA S77.44.01, *Fossil Fuel Plant — Steam Temperature Controls*, 2007.

D.2.3 API Publications. American Petroleum Institute, 1220 L Street, NW, Washington, DC 20005-4070.

API STD 620, *Design and Construction of Large, Welded, Low-Pressure Storage Tanks*, 2009.

API STD 650, *Welded Tanks for Oil Storage*, 2009.

API STD 653, *Tank Inspection, Repair, Alteration and Reconstruction*, 2009.

API RP 500, *Recommended Practice for Classification of Locations for Electrical Installation at Petroleum Facilities Classified as Class I, Division 1 and Division 2*, 1998 (reaffirmed 2002).

API RP 2003, *Protection Against Ignitions Arising Out of Static, Lightning, and Stray Currents*, 2008.

D.2.4 ASME Publications. American Society of Mechanical Engineers, Two Park Avenue, New York, NY 10016-5990.

Boiler and Pressure Vessel Code, 2007.

D.2.5 ASTM Publications. ASTM International, 100 Barr Harbor Drive, P.O. Box C700, West Conshohocken, PA 19428-2959.

ASTM D396, *Standard Specification for Fuel Oils*, 2009.

D.2.6 Other Publications. The following documents provide additional information about heat recovery steam generators (HSRGs).

Johnson, A. A., J. A. von Fraunhofer, and E. W. Jannett, "Combustion of Finned Steel Tubing During Stress Relief Heat Treatment," *Journal of Heat Treating*, 4(3), June 1986, pp. 265–271.

McDonald, C. F., "The Potential Danger of Fire in Gas Turbine Heat Exchangers," ASME 69-GT-38.

Theoclitus, G., "Heat Exchanger Fires and the Ignition of Solid Metals," *Journal of Engineering for Gas Turbines and Power*, 107, July 1985, pp. 607–612.

D.3 References for Extracts in Informational Sections.

NFPA 86, *Standard for Ovens and Furnaces*, 2015 edition.

Index

Copyright © 2017 National Fire Protection Association. All Rights Reserved.

The copyright in this index is separate and distinct from the copyright in the document that it indexes. The licensing provisions set forth for the document are not applicable to this index. This index may not be reproduced in whole or in part by any means without the express written permission of NFPA.

- | | |
|--|--|
| <p style="text-align: center;">-A-</p> <p>Administration, Chap. 1
 Application, 1.3, A.1.3
 Equivalency, 1.5, A.1.5
 Purpose, 1.2
 Retroactivity, 1.4
 Scope, 1.1, A.1.1
 Units and Formulas, 1.6
 Conversion Procedure, 1.6.3
 Primary and Equivalent Values, 1.6.2
 SI Units, 1.6.1</p> <p>Approved
 Definition, 3.2.1, A.3.2.1</p> <p>Authority Having Jurisdiction (AHJ)
 Definition, 3.2.2, A.3.2.2</p> <p>Authorized Personnel
 Definition, 3.3.1</p> <p>Automatic Fire Check
 Definition, 3.3.2</p> | <p style="text-align: center;">-D-</p> <p>Programmable Controller
 Definition, 3.3.9.1</p> <p>Temperature Controller
 Definition, 3.3.9.2</p> <p>Definitions, Chap. 3</p> <p style="text-align: center;">-E-</p> <p>Emergency Shutoff Valve
 Definition, 3.3.10</p> <p>Equipment Isolation Valve
 Definition, 3.3.11</p> <p>Example Maintenance Checklist, Annex B
 General, B.1
 Periodic Checklist, B.4
 Regular Shift Checklist, B.3
 Visual Operational Checklist, B.2</p> <p>Explanatory Material, Annex A</p> |
| <p style="text-align: center;">-B-</p> <p>Backfire Arrester
 Definition, 3.3.3</p> <p>Burner
 Definition, 3.3.4
 Dual-Fuel Burner
 Definition, 3.3.4.1
 Self-Piloted Burner
 Definition, 3.3.4.2</p> <p>Burner Management System
 Definition, 3.3.5, A.3.3.5</p> | <p style="text-align: center;">-F-</p> <p>Fire Protection, Chap. 10
 General, 10.1, A.10.1
 Inspection, Testing, and Maintenance of Fire Protection Equipment, 10.3
 Types of Fire Protection Systems, 10.2</p> <p>Flame Detector
 Definition, 3.3.12</p> <p>Flame Failure Response Time (FFRT)
 Definition, 3.3.13</p> <p>Flame Rod
 Definition, 3.3.14, A.3.3.14</p> <p>Flammable Limit
 Definition, 3.3.15</p> <p>Fluid Heater
 Definition, 3.3.16</p> <p>Fuel Gas
 Definition, 3.3.17</p> <p>Fuel Oil
 Definition, 3.3.18</p> |
| <p style="text-align: center;">-C-</p> <p>Combustion Air
 Definition, 3.3.6</p> <p>Combustion Safeguard
 Definition, 3.3.7</p> <p>Combustion Safety Circuitry
 Definition, 3.3.8</p> <p>Commissioning, Operations, Maintenance, Inspection, and Testing, Chap. 7
 Commissioning, 7.2
 Inspection, Testing, and Maintenance, 7.5
 Operations, 7.4
 Procedures, 7.7, A.7.7
 Record Retention, 7.6
 Scope, 7.1
 Training, 7.3</p> <p>Controller
 Definition, 3.3.9</p> | <p style="text-align: center;">-G-</p> <p>Gas Analyzer
 Definition, 3.3.19</p> <p>General, Chap. 4
 Approvals, Plans, and Specifications, 4.1
 Electrical, 4.1.3
 Safety Labeling, 4.2
 Thermal Fluids and Process Fluids, 4.3</p> |

Guarded

Definition, 3.3.20

-H-**Hardwired**

Definition, 3.3.21, A.3.3.21

Heaters, Chap. 9

Auxiliary Equipment, 9.2

Effluent Handling, 9.2.2, A.9.2.2

Gaseous Effluent, 9.2.2.1

Liquid Phase Effluent, 9.2.2.2

Expansion Tanks, 9.2.4

Pumps, 9.2.1

Valves, 9.2.3

General, 9.1

Flow, 9.1.4

Heating System Safety Equipment and Application, Chap. 8

Additional Interlocks, 8.18

Blanket Gas Low-Pressure, 8.18.3

Low Fluid Flow, 8.18.2

Air–Fuel Gas Mixing Machines, 8.13

Burner Management System Logic, 8.3, A.8.3

General, 8.3.1

Combustion Air Safety Devices, 8.6

Electrical Heating Systems, 8.17

Heating Element Excess Temperature Limit

Interlock, 8.17.2, A.8.17.2

Heating Equipment Controls, 8.17.1

Flame Supervision, 8.9

Fluid Excess Temperature Limit Interlock, 8.16

Fuel Pressure Switches (Gas or Liquid Fuel), 8.8

General, 8.2

Manual Emergency Switch, 8.2.9, A.8.2.9

Ignition of Main Burners — Fuel Gas or Liquid Fuel, 8.14

Liquid Fuel Atomization (Other than Mechanical
Atomization), 8.10

Liquid Fuel Temperature Limit Devices, 8.11, A.8.11

Multiple Fuel Systems, 8.12

Programmable Logic Controller Systems, 8.4, A.8.4

General, 8.4.3

PLC Logic Programs, 8.4.4

Safety PLCs, 8.4.5, A.8.4.5

Safety Control Application for Fuel-Fired Heating Systems, 8.5

Pre-Ignition Purging, 8.5.1

Mechanical Purging, 8.5.1.1

Natural Draft Purging, 8.5.1.2

Trial-for-Ignition Period, 8.5.2, A.8.5.2

Safety Shutoff Valves (Fuel Gas or Liquid Fuel), 8.7

Fuel Gas Safety Shutoff Valves, 8.7.2, A.8.7.2

General, 8.7.1

Liquid Fuel Safety Shutoff Valves, 8.7.3

Scope, 8.1

Stack Excess Temperature Limit Interlock, 8.15

Heating Systems, Chap. 6

Electrically Heated Units, 6.6

Electrical Installation, 6.6.3

Resistance Heating Systems, 6.6.4

Safety Equipment, 6.6.2

Scope, 6.6.1

Flue Product Venting, 6.5

Fuel Gas–Fired Units, 6.2, A.6.2

Air–Fuel Gas Mixers, 6.2.9, A.6.2.9

Mixing Machines, 6.2.9.2

Proportional Mixing, 6.2.9.1

Combustion Air, 6.2.3

Control of Contaminants, 6.2.6

Dual-Fuel and Combination Burners, 6.2.12

Equipment Fuel Gas Piping, 6.2.5

Equipment Isolation Valves, 6.2.5.1

Fuel Gas Burners, 6.2.10

Fuel Gas Supply Piping, 6.2.4

Fuel Ignition, 6.2.11

General, 6.2.2

Overpressure Protection, 6.2.8

Pressure Regulators, Pressure Relief Valves, and Pressure
Switches, 6.2.7

Scope, 6.2.1

General, 6.1

Liquid Fuel–Fired Units, 6.3

Combustion Air, 6.3.3, A.6.3.3

Dual-Fuel and Combination Burners, 6.3.9

Equipment Fuel Piping, 6.3.5

Filters and Strainers, 6.3.5.4, A.6.3.5.4

Pressure Gauges, 6.3.5.6, A.6.3.5.6

Pressure Regulation, 6.3.5.5

Fuel Atomization, 6.3.6

Fuel Ignition, 6.3.8

Fuel Supply Piping, 6.3.4

General, 6.3.2

Liquid Fuel Burners, 6.3.7

Scope, 6.3.1, A.6.3.1

Oxygen Enhanced Fuel–Fired Units, 6.4

-I-**Informational References, Annex D****Interlock**

Definition, 3.3.22

Excess Temperature Limit Interlock

Definition, 3.3.22.1

Safety Interlock

Definition, 3.3.22.2

-L-**Labeled**

Definition, 3.2.3

Listed

Definition, 3.2.4, A.3.2.4

Location and Construction, Chap. 5

Explosion Mitigation, 5.3, A.5.3

Fluid Heater Design, 5.2, A.5.2

Pressure Relief Devices, 5.2.10

Heat Baffles and Reflectors, 5.7

Heating Elements and Insulation, 5.6

Location, 5.1

Floors and Clearances, 5.1.4		
General, 5.1.1		
Location in Regard to Stock, Processes, and Personnel, 5.1.3		
Manifolds and External Piping, 5.1.5		
Structural Members of the Building, 5.1.2		
Mountings and Auxiliary Equipment, 5.5		
Fluid Piping System, 5.5.1		
Ventilation and Exhaust System, 5.4, A.5.4		
Building Makeup Air, 5.4.1, A.5.4.1		
Ductwork, 5.4.3		
Fans and Motors, 5.4.2		
Lower Flammable Limit (LFL)		
Definition, 3.3.23		
	-M-	
Manufacturer		
Definition, 3.3.24		
Mixer		
Air–Fuel Gas Mixer		
Definition, 3.3.25.1		
Definition, 3.3.25		
Proportional Mixer		
Definition, 3.3.25.2		
Mixing Blower		
Definition, 3.3.26		
Mixing Machine		
Definition, 3.3.27		
	-O-	
Operator		
Definition, 3.3.28		
	-P-	
Pilot		
Definition, 3.3.29		
Interrupted Pilot		
Definition, 3.3.29.1		
Pressure Regulator		
Definition, 3.3.30		
Line Pressure Regulator		
Definition, 3.3.30.1		
Monitoring Pressure Regulator		
Definition, 3.3.30.2		
Series Pressure Regulator		
Definition, 3.3.30.3		
Service Pressure Regulator		
Definition, 3.3.30.4		
Purge		
Definition, 3.3.31		
	-Q-	
Qualified Personnel		
Definition, 3.3.32		
	-R-	
Recommended Practice		
Definition, 3.2.5		
Referenced Publications , Chap. 2		
Resistance Heating System		
Definition, 3.3.33		
	-S-	
Safe-Start Check		
Definition, 3.3.34, A.3.3.34		
Safety Device		
Definition, 3.3.35		
Safety Relay		
Definition, 3.3.36		
Safety Shutoff Valve		
Definition, 3.3.37		
Scf		
Definition, 3.3.38		
Shall		
Definition, 3.2.6		
Should		
Definition, 3.2.7		
Standard		
Definition, 3.2.8		
Steam Extinguishing Systems , Annex C		
General, C.1		
Life Hazard, C.2		
Steam Outlets, C.3		
Supervised Flame		
Definition, 3.3.39		
Switch		
Closed Position Indicator Switch		
Definition, 3.3.40.1		
Definition, 3.3.40		
Differential Pressure Switch		
Definition, 3.3.40.2		
Flow Switch		
Definition, 3.3.40.3		
Pressure Switch		
Definition, 3.3.40.4		
Proof-of-Closure Switch		
Definition, 3.3.40.5, A.3.3.40.5		
	-T-	
Tank		
Definition, 3.3.41		
Expansion Tank		
Definition, 3.3.41.1		
Trial-for-Ignition Period (Flame-Establishing Period)		
Definition, 3.3.42		
	-V-	
Valve Proving System		
Definition, 3.3.43, A.3.3.43		
Vent Limiter		
Definition, 3.3.44		

Sequence of Events for the Standards Development Process

Once the current edition is published, a Standard is opened for Public Input.

Step 1 – Input Stage

- Input accepted from the public or other committees for consideration to develop the First Draft
- Technical Committee holds First Draft Meeting to revise Standard (23 weeks); Technical Committee(s) with Correlating Committee (10 weeks)
- Technical Committee ballots on First Draft (12 weeks); Technical Committee(s) with Correlating Committee (11 weeks)
- Correlating Committee First Draft Meeting (9 weeks)
- Correlating Committee ballots on First Draft (5 weeks)
- First Draft Report posted on the document information page

Step 2 – Comment Stage

- Public Comments accepted on First Draft (10 weeks) following posting of First Draft Report
- If Standard does not receive Public Comments and the Technical Committee chooses not to hold a Second Draft meeting, the Standard becomes a Consent Standard and is sent directly to the Standards Council for issuance (see Step 4) or
- Technical Committee holds Second Draft Meeting (21 weeks); Technical Committee(s) with Correlating Committee (7 weeks)
- Technical Committee ballots on Second Draft (11 weeks); Technical Committee(s) with Correlating Committee (10 weeks)
- Correlating Committee Second Draft Meeting (9 weeks)
- Correlating Committee ballots on Second Draft (8 weeks)
- Second Draft Report posted on the document information page

Step 3 – NFPA Technical Meeting

- Notice of Intent to Make a Motion (NITMAM) accepted (5 weeks) following the posting of Second Draft Report
- NITMAMs are reviewed and valid motions are certified by the Motions Committee for presentation at the NFPA Technical Meeting
- NFPA membership meets each June at the NFPA Technical Meeting to act on Standards with “Certified Amending Motions” (certified NITMAMs)
- Committee(s) vote on any successful amendments to the Technical Committee Reports made by the NFPA membership at the NFPA Technical Meeting

Step 4 – Council Appeals and Issuance of Standard

- Notification of intent to file an appeal to the Standards Council on Technical Meeting action must be filed within 20 days of the NFPA Technical Meeting
- Standards Council decides, based on all evidence, whether to issue the standard or to take other action

Notes:

1. Time periods are approximate; refer to published schedules for actual dates.
2. Annual revision cycle documents with certified amending motions take approximately 101 weeks to complete.
3. Fall revision cycle documents receiving certified amending motions take approximately 141 weeks to complete.

Committee Membership Classifications^{1,2,3,4}

The following classifications apply to Committee members and represent their principal interest in the activity of the Committee.

1. M *Manufacturer*: A representative of a maker or marketer of a product, assembly, or system, or portion thereof, that is affected by the standard.
2. U *User*: A representative of an entity that is subject to the provisions of the standard or that voluntarily uses the standard.
3. IM *Installer/Maintainer*: A representative of an entity that is in the business of installing or maintaining a product, assembly, or system affected by the standard.
4. L *Labor*: A labor representative or employee concerned with safety in the workplace.
5. RT *Applied Research/Testing Laboratory*: A representative of an independent testing laboratory or independent applied research organization that promulgates and/or enforces standards.
6. E *Enforcing Authority*: A representative of an agency or an organization that promulgates and/or enforces standards.
7. I *Insurance*: A representative of an insurance company, broker, agent, bureau, or inspection agency.
8. C *Consumer*: A person who is or represents the ultimate purchaser of a product, system, or service affected by the standard, but who is not included in (2).
9. SE *Special Expert*: A person not representing (1) through (8) and who has special expertise in the scope of the standard or portion thereof.

NOTE 1: “Standard” connotes code, standard, recommended practice, or guide.

NOTE 2: A representative includes an employee.

NOTE 3: While these classifications will be used by the Standards Council to achieve a balance for Technical Committees, the Standards Council may determine that new classifications of member or unique interests need representation in order to foster the best possible Committee deliberations on any project. In this connection, the Standards Council may make such appointments as it deems appropriate in the public interest, such as the classification of “Utilities” in the National Electrical Code Committee.

NOTE 4: Representatives of subsidiaries of any group are generally considered to have the same classification as the parent organization.

Submitting Public Input / Public Comment Through the Online Submission System

Soon after the current edition is published, a Standard is open for Public Input.

Before accessing the Online Submission System, you must first sign in at www.nfpa.org. *Note: You will be asked to sign-in or create a free online account with NFPA before using this system:*

- a. Click on Sign In at the upper right side of the page.
- b. Under the Codes and Standards heading, click on the “List of NFPA Codes & Standards,” and then select your document from the list or use one of the search features.

OR

- a. Go directly to your specific document information page by typing the convenient shortcut link of www.nfpa.org/document# (Example: NFPA 921 would be www.nfpa.org/921). Sign in at the upper right side of the page.

To begin your Public Input, select the link “The next edition of this standard is now open for Public Input” located on the About tab, Current & Prior Editions tab, and the Next Edition tab. Alternatively, the Next Edition tab includes a link to Submit Public Input online.

At this point, the NFPA Standards Development Site will open showing details for the document you have selected. This “Document Home” page site includes an explanatory introduction, information on the current document phase and closing date, a left-hand navigation panel that includes useful links, a document Table of Contents, and icons at the top you can click for Help when using the site. The Help icons and navigation panel will be visible except when you are actually in the process of creating a Public Input.

Once the First Draft Report becomes available there is a Public Comment period during which anyone may submit a Public Comment on the First Draft. Any objections or further related changes to the content of the First Draft must be submitted at the Comment stage.

To submit a Public Comment you may access the online submission system utilizing the same steps as previously explained for the submission of Public Input.

For further information on submitting public input and public comments, go to: <http://www.nfpa.org/publicinput>.

Other Resources Available on the Document Information Pages

About tab: View general document and subject-related information.

Current & Prior Editions tab: Research current and previous edition information on a Standard.

Next Edition tab: Follow the committee’s progress in the processing of a Standard in its next revision cycle.

Technical Committee tab: View current committee member rosters or apply to a committee.

Technical Questions tab: For members and Public Sector Officials/AHJs to submit questions about codes and standards to NFPA staff. Our Technical Questions Service provides a convenient way to receive timely and consistent technical assistance when you need to know more about NFPA codes and standards relevant to your work. Responses are provided by NFPA staff on an informal basis.

Products & Training tab: List of NFPA’s publications and training available for purchase.

Information on the NFPA Standards Development Process

I. Applicable Regulations. The primary rules governing the processing of NFPA standards (codes, standards, recommended practices, and guides) are the NFPA *Regulations Governing the Development of NFPA Standards (Regs)*. Other applicable rules include NFPA *Bylaws*, NFPA *Technical Meeting Convention Rules*, NFPA *Guide for the Conduct of Participants in the NFPA Standards Development Process*, and the NFPA *Regulations Governing Petitions to the Board of Directors from Decisions of the Standards Council*. Most of these rules and regulations are contained in the *NFPA Standards Directory*. For copies of the *Directory*, contact Codes and Standards Administration at NFPA Headquarters; all these documents are also available on the NFPA website at “www.nfpa.org.”

The following is general information on the NFPA process. All participants, however, should refer to the actual rules and regulations for a full understanding of this process and for the criteria that govern participation.

II. Technical Committee Report. The Technical Committee Report is defined as “the Report of the responsible Committee(s), in accordance with the Regulations, in preparation of a new or revised NFPA Standard.” The Technical Committee Report is in two parts and consists of the First Draft Report and the Second Draft Report. (See *Regs* at Section 1.4.)

III. Step 1: First Draft Report. The First Draft Report is defined as “Part one of the Technical Committee Report, which documents the Input Stage.” The First Draft Report consists of the First Draft, Public Input, Committee Input, Committee and Correlating Committee Statements, Correlating Notes, and Ballot Statements. (See *Regs* at 4.2.5.2 and Section 4.3.) Any objection to an action in the First Draft Report must be raised through the filing of an appropriate Comment for consideration in the Second Draft Report or the objection will be considered resolved. [See *Regs* at 4.3.1(b).]

IV. Step 2: Second Draft Report. The Second Draft Report is defined as “Part two of the Technical Committee Report, which documents the Comment Stage.” The Second Draft Report consists of the Second Draft, Public Comments with corresponding Committee Actions and Committee Statements, Correlating Notes and their respective Committee Statements, Committee Comments, Correlating Revisions, and Ballot Statements. (See *Regs* at 4.2.5.2 and Section 4.4.) The First Draft Report and the Second Draft Report together constitute the Technical Committee Report. Any outstanding objection following the Second Draft Report must be raised through an appropriate Amending Motion at the NFPA Technical Meeting or the objection will be considered resolved. [See *Regs* at 4.4.1(b).]

V. Step 3a: Action at NFPA Technical Meeting. Following the publication of the Second Draft Report, there is a period during which those wishing to make proper Amending Motions on the Technical Committee Reports must signal their intention by submitting a Notice of Intent to Make a Motion (NITMAM). (See *Regs* at 4.5.2.) Standards that receive notice of proper Amending Motions (Certified Amending Motions) will be presented for action at the annual June NFPA Technical Meeting. At the meeting, the NFPA membership can consider and act on these Certified Amending Motions as well as Follow-up Amending Motions, that is, motions that become necessary as a result of a previous successful Amending Motion. (See 4.5.3.2 through 4.5.3.6 and Table 1, Columns 1-3 of *Regs* for a summary of the available Amending Motions and who may make them.) Any outstanding objection following action at an NFPA Technical Meeting (and any further Technical Committee consideration following successful Amending Motions, see *Regs* at 4.5.3.7 through 4.6.5.3) must be raised through an appeal to the Standards Council or it will be considered to be resolved.

VI. Step 3b: Documents Forwarded Directly to the Council. Where no NITMAM is received and certified in accordance with the Technical Meeting Convention Rules, the standard is forwarded directly to the Standards Council for action on issuance. Objections are deemed to be resolved for these documents. (See *Regs* at 4.5.2.5.)

VII. Step 4a: Council Appeals. Anyone can appeal to the Standards Council concerning procedural or substantive matters related to the development, content, or issuance of any document of the NFPA or on matters within the purview of the authority of the Council, as established by the Bylaws and as determined by the Board of Directors. Such appeals must be in written form and filed with the Secretary of the Standards Council (see *Regs* at Section 1.6). Time constraints for filing an appeal must be in accordance with 1.6.2 of the *Regs*. Objections are deemed to be resolved if not pursued at this level.

VIII. Step 4b: Document Issuance. The Standards Council is the issuer of all documents (see Article 8 of *Bylaws*). The Council acts on the issuance of a document presented for action at an NFPA Technical Meeting within 75 days from the date of the recommendation from the NFPA Technical Meeting, unless this period is extended by the Council (see *Regs* at 4.7.2). For documents forwarded directly to the Standards Council, the Council acts on the issuance of the document at its next scheduled meeting, or at such other meeting as the Council may determine (see *Regs* at 4.5.2.5 and 4.7.4).

IX. Petitions to the Board of Directors. The Standards Council has been delegated the responsibility for the administration of the codes and standards development process and the issuance of documents. However, where extraordinary circumstances requiring the intervention of the Board of Directors exist, the Board of Directors may take any action necessary to fulfill its obligations to preserve the integrity of the codes and standards development process and to protect the interests of the NFPA. The rules for petitioning the Board of Directors can be found in the *Regulations Governing Petitions to the Board of Directors from Decisions of the Standards Council* and in Section 1.7 of the *Regs*.

X. For More Information. The program for the NFPA Technical Meeting (as well as the NFPA website as information becomes available) should be consulted for the date on which each report scheduled for consideration at the meeting will be presented. To view the First Draft Report and Second Draft Report as well as information on NFPA rules and for up-to-date information on schedules and deadlines for processing NFPA documents, check the NFPA website (www.nfpa.org/docinfo) or contact NFPA Codes & Standards Administration at (617) 984-7246.



Xchange™

The place to connect online with your fire, electrical, and life safety peers

Have a question about the code or standard you're reading now?

NFPA Xchange™ can help!

NFPA Xchange™ brings together over 30,000 professionals worldwide, asking and answering each other's questions, sharing ideas, and discussing the issues impacting your industry today.

NFPA Xchange™ is free to join and offers:

- A robust collection of previously asked and answered questions to search
- Access to thousands of peers for problem-solving and on-the-job advice
- NFPA blogs, white papers, and webinars in one convenient place

NFPA members also enjoy Xchange™ **Members Only**, the online space for technical questions* answered by NFPA staff, exclusive NFPA live events, and premier access to curated content.

Join NFPA Xchange™ TODAY!

www.nfpa.org/xchange

Xchange Today. Safer Tomorrow.

*For the full terms of use, please visit nfpa.org/standard_items/terms-of-use#xchange. NFPA® is a registered trademark of the National Fire Protection Association, Quincy, MA 02169.